



49 Plough Street SALISBURY NORTH SA

4 2 2

For an in-depth look at this home, please click on the 3D tour for a virtual walk-through or copy and paste this link into your browser

Virtual <https://my.matterport.com/show/?m=pLA9LwHvVdA> Tour Link:

To submit an offer, please copy and paste this link into your browser:
<https://www.edgerealty.com.au/buying/make-an-offer/>

Mike Lao, Brendon Ly and Edge Realty RLA256385 are proud to present to the market this exceptional 4 bedroom, 2 bathroom home, you'll be proud to call your own. Situated in a highly sought-after neighbourhood, this home offers a perfect blend of style, comfort, and convenience with multiple living spaces, ducted evaporative air-conditioning and ducted gas throughout, ensuring year-round comfort.

Price : \$ 560,000
Building Size : 145 sqm
Land Size : 548 sqm
View : <https://www.edgerealty.com.au/sale/sa/north-north-east-suburbs/salisbury-north/residential/house/7707441>



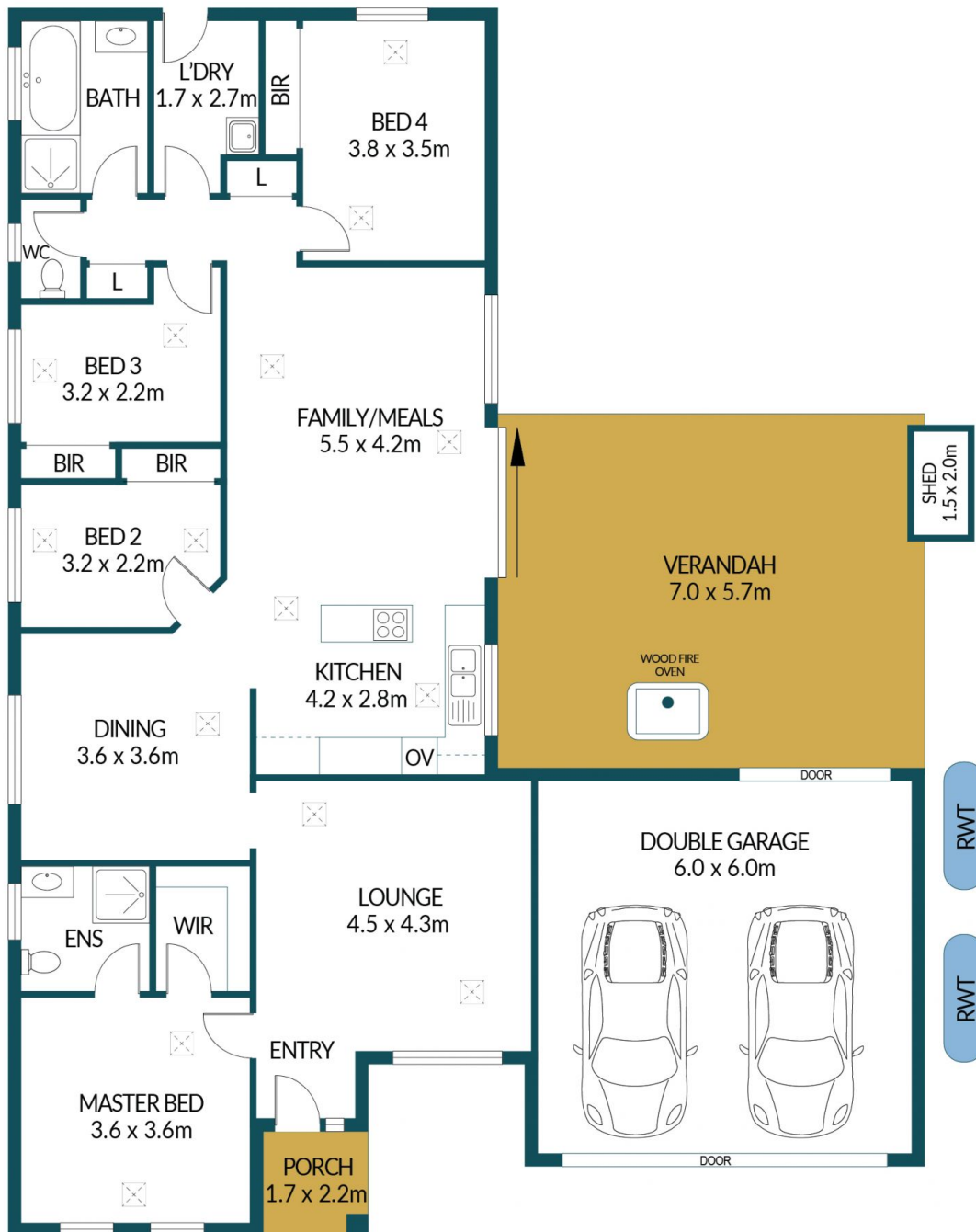
Mike Lao
0410390250



Brendon Ly
0447888444



SHED
1.5 x 0.7m



49 PLOUGH STREET, SALISBURY NORTH

Disclaimer

Plans shown are for marketing purposes only. All dimensions are approximate and not to scale. They are subject to errors and inaccuracies and no liability will be accepted. Interested parties should make their own enquiries. Inclusions and exclusions must be confirmed in the Residential Contract.

APPROXIMATE DIMENSIONS

LIVING:	145.2m ²
GARAGE:	36.0m ²
PORCH/VERANDAH:	43.6m ²
SHED:	4.1m ²
TOTAL:	228.9m ²