



## 20 Cross Keys Road BRAHMA LODGE SA

3 1 3

\*For an in-depth look at this home, please click on the 3D tour for a virtual walk-through or copy and paste this link into your browser\*

Virtual <https://my.matterport.com/show/?m=T3FcvKi6ycl> Tour Link:

To submit an offer, please copy and paste this link into your browser:  
<https://www.edgerealty.com.au/buying/make-an-offer/>

Mike Lao, Brendon Ly and Edge Realty RLA256385 are proud to present to the market this wonderful home well loved by its current owners and ready to be transformed into something truly incredible with your loving touch.

Gardening enthusiasts will delight in the charming gardens adorned with established plants and flowers, allowing your

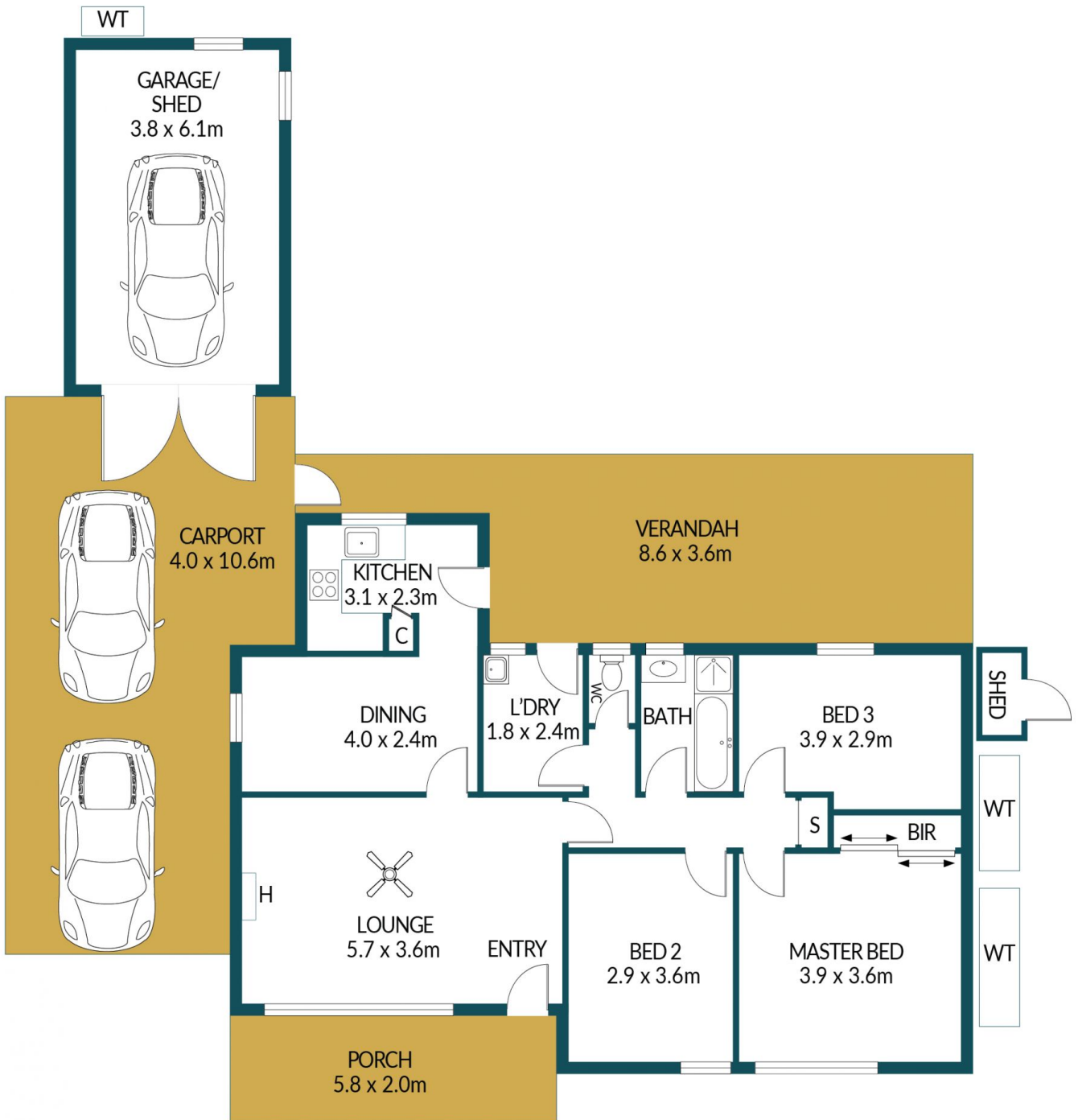
**Price** : \$ 520,000  
**Building Size** : 94 sqm  
**Land Size** : 624 sqm  
**View** : <https://www.edgerealty.com.au/sale/sa/north-north-east-suburbs/brahma-lodge/residential/house/7712531>



**Mike Lao**  
0410390250



**Brendon Ly**  
0447888444



## 20 CROSS KEYS ROAD, BRAHMA LODGE

### Disclaimer

Plans shown are for marketing purposes only. All dimensions are approximate and not to scale. They are subject to errors and inaccuracies and no liability will be accepted. Interested parties should make their own enquiries. Inclusions and exclusions must be confirmed in the Residential Contract.

### APPROXIMATE DIMENSIONS

LIVING:	94.0m <sup>2</sup>
GARAGE/SHED:	24.2m <sup>2</sup>
PORCH/VERANDAH:	44.1m <sup>2</sup>
CARPORT:	43.5m <sup>2</sup>
TOTAL:	205.8m <sup>2</sup>