



34 Saint Road SMITHFIELD PLAINS SA

4 1 2

For an in-depth look at this home, please click on the 3D tour for a virtual walk-through or copy and paste this link into your browser

Virtual Tour Link:
<https://my.matterport.com/show/?m=C5zYTtYBJTcP>

To submit an offer, please copy and paste this link into your browser:
<https://www.edgerealty.com.au/buying/make-an-offer/>

Mike Lao, Brendon Ly and Edge Realty RLA256385 are proud to present to the market this fantastic property, perfectly suited to first home buyers, investors, and families alike. Are you ready to make your dream of owning a home a reality? Or perhaps you're an investor seeking a solid opportunity? Then look no further, this home offers a comfortable and convenient lifestyle for its lucky new

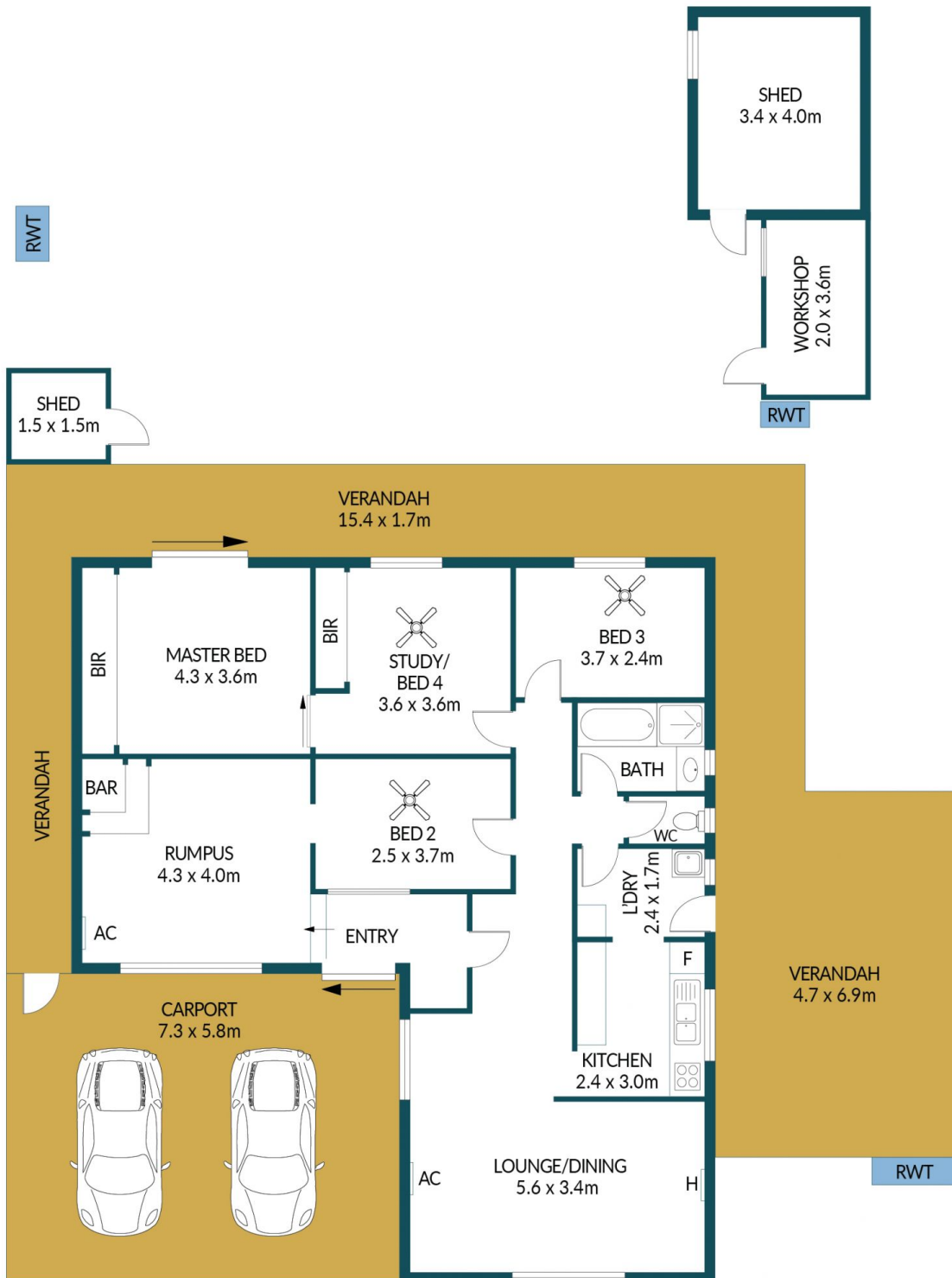
Price : \$ 395,000
Building Size : 136 sqm
Land Size : 612 sqm
View : <https://www.edgerealty.com.au/sale/sa/north-north-east-suburbs/smithfield-plains/residential/house/7714337>



Mike Lao
0410390250



Brendon Ly
0447888444



34 SAINT ROAD, SMITHFIELD PLAINS

Disclaimer

Plans shown are for marketing purposes only. All dimensions are approximate and not to scale. They are subject to errors and inaccuracies and no liability will be accepted. Interested parties should make their own enquiries. Inclusions and exclusions must be confirmed in the Residential Contract.

APPROXIMATE DIMENSIONS

LIVING:	136.4m ²
CARPOR:	42.3m ²
VERANDAH:	69.1m ²
WORKSHOP/SHED:	31.0m ²
TOTAL:	278.8m ²