



5 Sullivan Road ELIZABETH PARK SA

2 1 3

For an in-depth look at this home, please click on the 3D tour for a virtual walk-through or copy and paste this link into your browser

Virtual Tour Link: <https://bit.ly/3szKwcS>

To submit an offer, please copy and paste this link into your browser:

<https://www.edgerealty.com.au/buying/make-an-offer/>

Mike Lao, Brendon Ly and Edge Realty RLA256385 are proud to present this charming abode that's perfectly suited to first-time buyers, downsizers and discerning investors alike. Currently tenanted with a periodic lease returning \$320 per week, this is an easy-care, set-and-forget addition to any property portfolio.

Please note photographs of the property were taken in

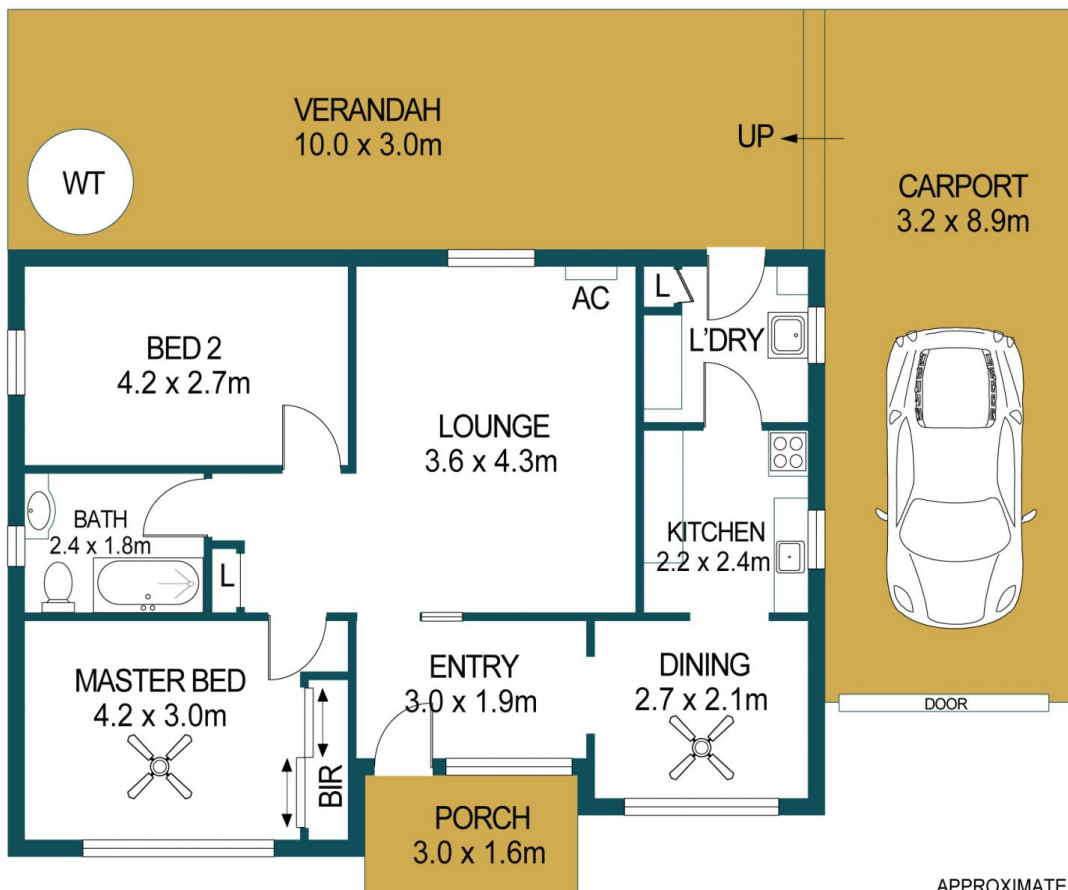
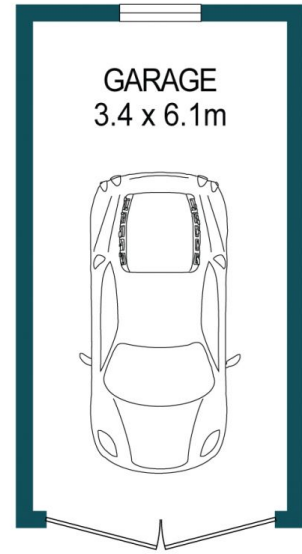
Price : \$ 393,000
Building Size : 67 sqm
Land Size : 785 sqm
View : <https://www.edgerealty.com.au/sale/sa/north-north-east-suburbs/elizabeth-park/residential/house/7715259>



Mike Lao
0410390250



Brendon Ly
0447888444



APPROXIMATE DIMENSIONS	
LIVING:	67.4m ²
GARAGE:	20.7m ²
CARPORT:	28.5m ²
PORCH:	4.8m ²
VERANDAH:	30.0m ²
TOTAL:	151.4m ²

5 SULLIVAN ROAD, ELIZABETH PARK

DISCLAIMER

PLANS SHOWN ARE FOR MARKETING PURPOSES ONLY, ALL DIMENSIONS ARE APPROXIMATE AND NOT TO SCALE. THEY ARE SUBJECT TO ERRORS AND INACCURACIES AND NO LIABILITY WILL BE ACCEPTED. INTERESTED PARTIES SHOULD MAKE THEIR OWN ENQUIRIES.



IMAGES AND FLOORPLAN BY:
IN-HOUSE
IMAGING
inhouseimaging.com.au