



39 Dockett Road ELIZABETH DOWNS SA

3 1 1

For an in-depth look at this home, please click on the 3D tour for a virtual walk-through or copy and paste this link into your browser

Virtual Tour Link: <https://shorturl.at/cerU4>

To submit an offer, please copy and paste this link into your browser:
<https://www.edgerealty.com.au/buying/make-an-offer/>

Mike Lao, Brendon Ly and Edge Realty RLA256385 are proud to present to the market this impressive corner allotment for investors, families and renovators alike. The property is currently tenanted with a fixed lease of \$290 per week in place until 12/2/2024, making it an ideal investment opportunity.

Step inside through the front porch and you are welcomed

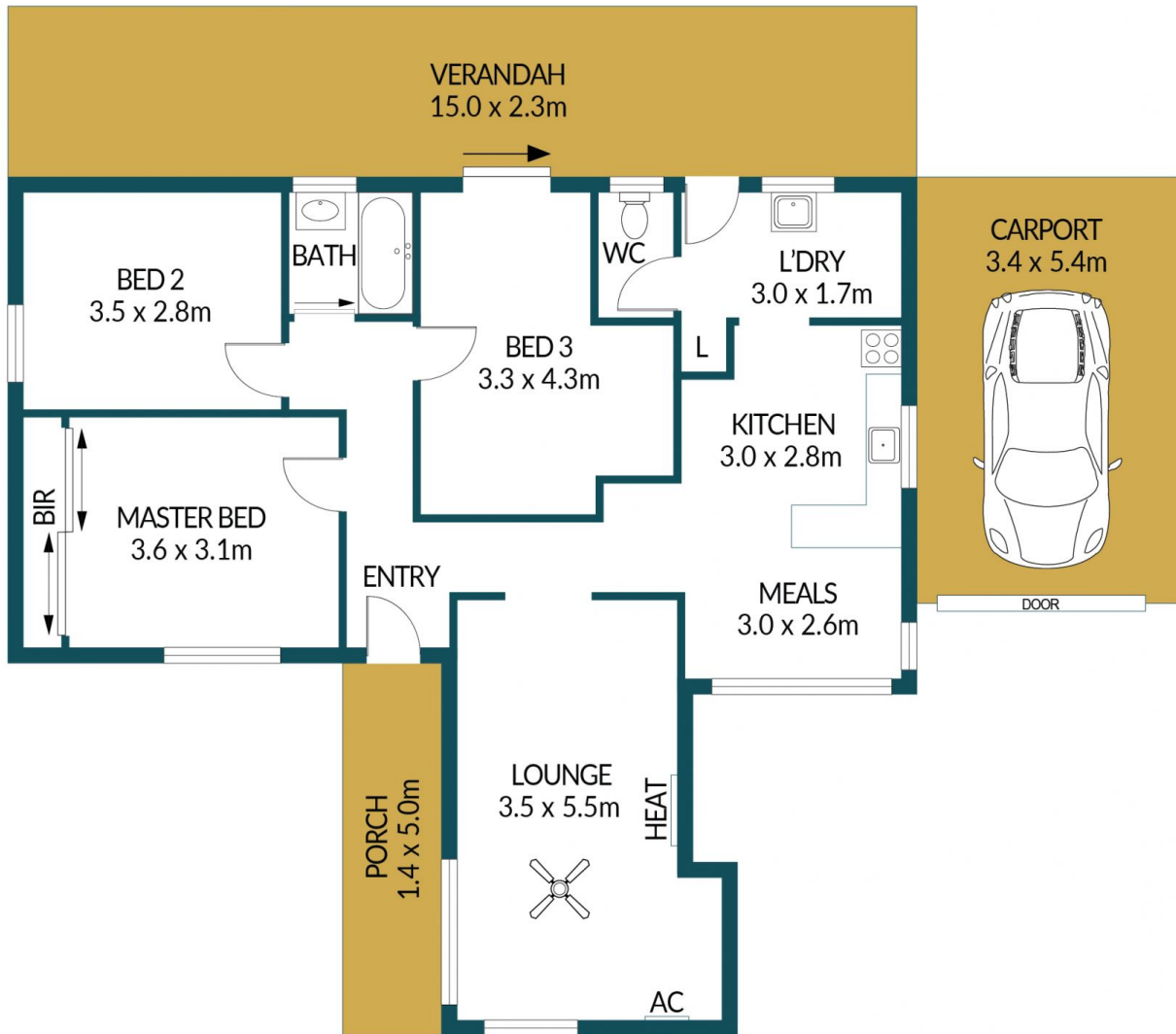
Price : \$ 333,000
Building Size : 92 sqm
Land Size : 573 sqm
View : <https://www.edgerealty.com.au/sale/sa/north-north-east-suburbs/elizabeth-downs/residential/house/7720818>



Mike Lao
0410390250



Brendon Ly
0447888444



39 DOCKETT ROAD, ELIZABETH DOWNS

Disclaimer

Plans shown are for marketing purposes only. All dimensions are approximate and not to scale. They are subject to errors and inaccuracies and no liability will be accepted. Interested parties should make their own enquiries. Inclusions and exclusions must be confirmed in the Residential Contract.

APPROXIMATE DIMENSIONS

LIVING:	92.3m ²
CARPORT:	18.4m ²
PORCH:	7.0m ²
VERANDAH:	34.5m ²
TOTAL:	152.2m ²