

### 3 Gibson Street SMITHFIELD PLAINS SA

3 2 2

\*For an in-depth look at this home, please click on the 3D tour for a virtual walk-through or copy and paste this link into your browser\*

Virtual <https://my.matterport.com/show/?m=i1AjkDo2s62> Tour Link:

To submit an offer, please copy and paste this link into your browser:  
<https://www.edgerealty.com.au/buying/make-an-offer/>

Mike Lao, Tyson Bennett and Edge Realty RLA256385 are proud to present to the market this stunning Fairmont homes property, ready for it's lucky first owners to move in and enjoy. The single-storey layout boasts 2.7m high ceilings, ducted reverse cycle air-conditioning throughout, three bedrooms, two bathrooms, multiple living zones and a long list of must-have features that will leave you in awe.

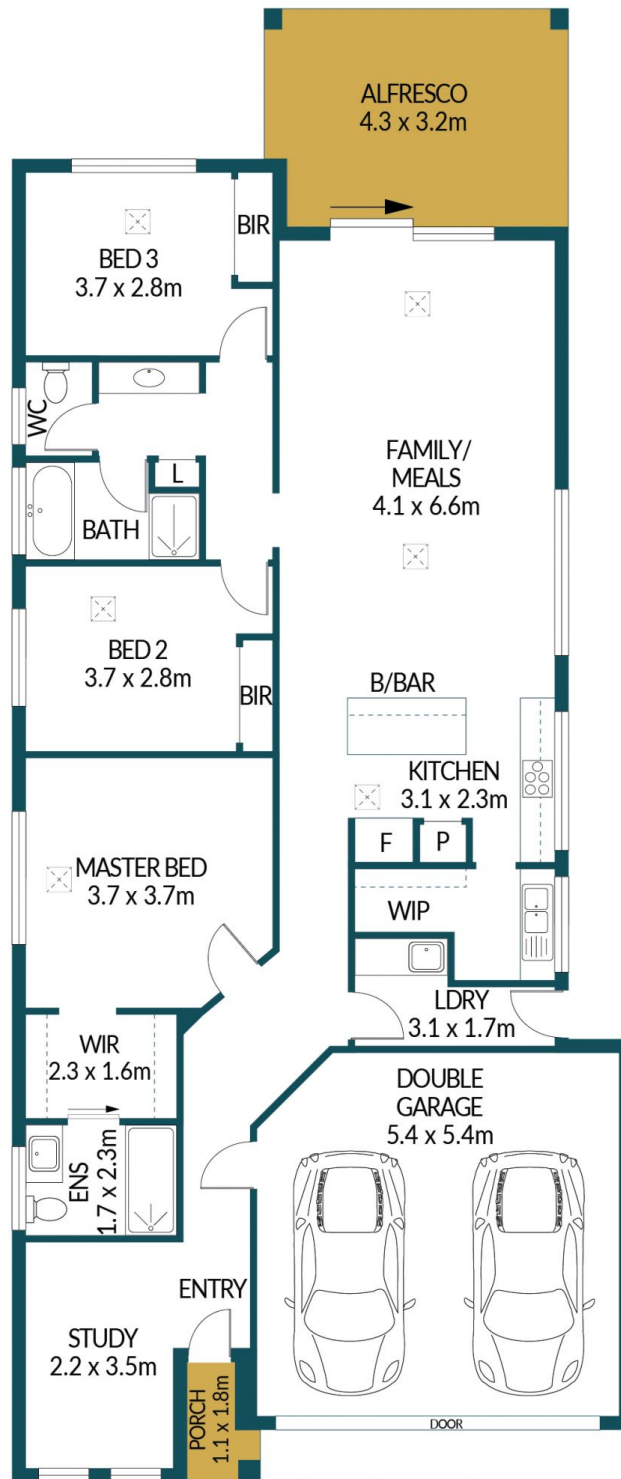
**Price** : \$ 550,000  
**Building Size** : 196 sqm  
**Land Size** : 322 sqm  
**View** : <https://www.edgerealty.com.au/sale/sa/north-north-east-suburbs/smithfield-plains/residential/house/7728829>



**Mike Lao**  
0410390250



**Tyson Bennett**  
0437161997



### 3 GIBSON STREET, SMITHFIELD PLAINS

#### Disclaimer

Plans shown are for marketing purposes only. All dimensions are approximate and not to scale. They are subject to errors and inaccuracies and no liability will be accepted. Interested parties should make their own enquiries. Inclusions and exclusions must be confirmed in the Residential Contract.

#### APPROXIMATE DIMENSIONS

LIVING:	143.96m <sup>2</sup>
GARAGE:	34.76m <sup>2</sup>
PORCH:	2.23m <sup>2</sup>
ALFRESCO:	15.49m <sup>2</sup>
TOTAL:	196.44m <sup>2</sup>