

## 28 Wilfred Avenue SALISBURY SA

3 1 2

\*For an in-depth look at this home, please click on the 3D tour for a virtual walk-through or copy and paste this link into your browser\*

Virtual Tour Link: <https://shorturl.at/oyGY5>

To submit an offer, please copy and paste this link into your browser:

<https://www.edgerealty.com.au/buying/make-an-offer/>

Mike Lao, Tyson Bennett and Edge Realty RLA256385 are proud to present to the market this delightful property stacked with classic charm. Boasting 3 bedrooms and 1 bathroom, this home offers spacious living spaces both inside and out. Equipped with a 3kW solar system and ducted evaporative air-conditioning throughout ensuring you are comfortable year round. The property is currently tenanted with a fixed lease of \$390 per week until 29/8/24.

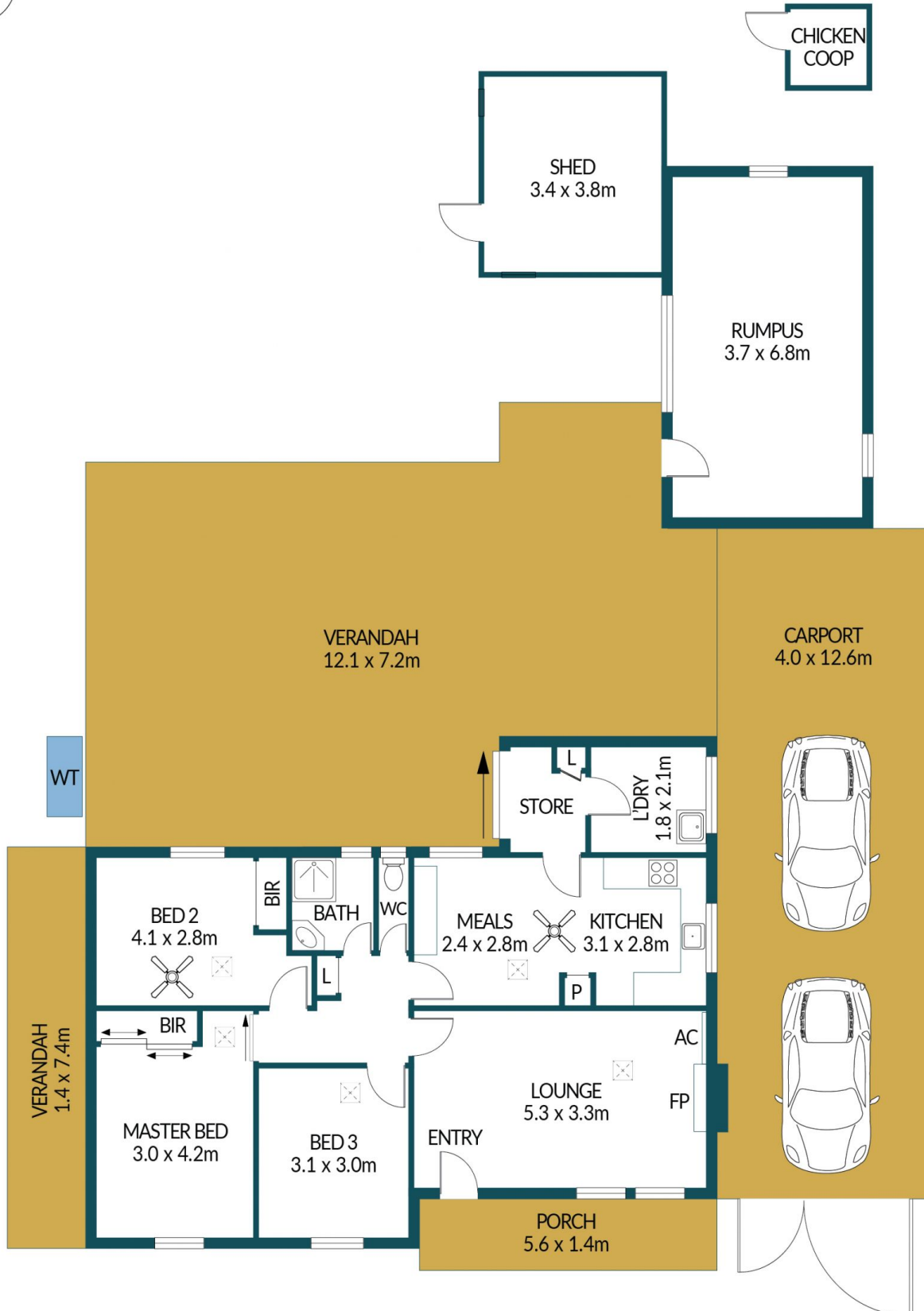
**Price** : \$ 515,000  
**Building Size** : 89 sqm  
**Land Size** : 668 sqm  
**View** : <https://www.edgerealty.com.au/sale/sa/north-north-east-suburbs/salisbury/residential/house/7729832>



**Mike Lao**  
0410390250



**Tyson Bennett**  
0437161997



## 28 WILFRED AVENUE, SALISBURY

### Disclaimer

Plans shown are for marketing purposes only. All dimensions are approximate and not to scale. They are subject to errors and inaccuracies and no liability will be accepted. Interested parties should make their own enquiries. Inclusions and exclusions must be confirmed in the Residential Contract.

### APPROXIMATE DIMENSIONS

LIVING:	89.6m <sup>2</sup>
CHICKENCOOP/PORCH:	10.1m <sup>2</sup>
CARPORT/RUMPUS:	75.6m <sup>2</sup>
VERANDAH/SHED:	110.4m <sup>2</sup>
TOTAL:	285.7m <sup>2</sup>