



22 Ashton Road DAVOREN PARK SA

2 1 4

For an in-depth look at this home, please click on the 3D tour for a virtual walk-through or copy and paste this link into your browser

Virtual Tour Link: <https://shorturl.at/dtIOZ>

To submit an offer, please copy and paste this link into your browser:

<https://www.edgerealty.com.au/buying/make-an-offer/>

Mike Lao and Edge Realty RLA256385 are proud to present to the market this well-situated two-bedroom home situated on a quiet, family-friendly street opposite Don Hardy Reserve. With off street parking for multiple cars and spacious indoor spaces, this is a property perfect for those who love to entertain or work on their next home project. The property is currently tenanted on a periodic lease returning \$330 per week, making this the perfect

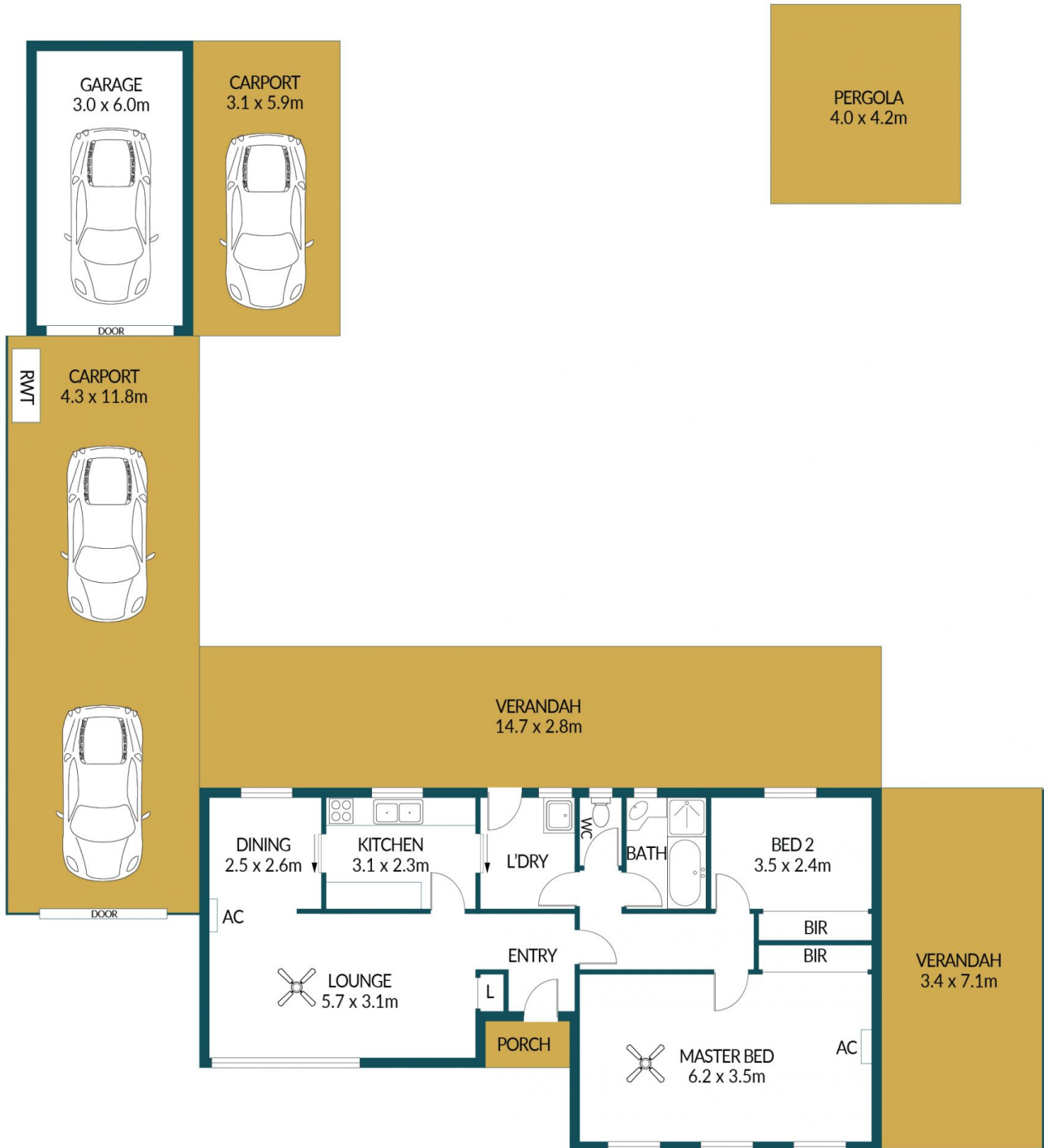
Price : \$ 422,000
Building Size : 85 sqm
Land Size : 753 sqm
View : <https://www.edgerealty.com.au/sale/sa/north-north-east-suburbs/davoren-park/residential/house/7732423>



Mike Lao
0410390250



Tyson Bennett
0437161997



22 ASHTON ROAD, DAVOREN PARK

Disclaimer

Plans shown are for marketing purposes only. All dimensions are approximate and not to scale. They are subject to errors and inaccuracies and no liability will be accepted. Interested parties should make their own enquiries. Inclusions and exclusions must be confirmed in the Residential Contract.

APPROXIMATE DIMENSIONS

LIVING:	85.0m ²
GARAGE/CARPORT:	86.6m ²
PORCH/VERANDAH:	67.1m ²
PERGOLA:	16.8m ²
TOTAL:	255.5m ²