



2 Gum Tree Walk SMITHFIELD PLAINS SA

3  1  1 

For an in-depth look at this home, please click on the 3D tour for a virtual walk-through or copy and paste this link into your browser

Virtual Tour Link:
<https://my.matterport.com/show/?m=ZCnjPCKfbkg>

To submit an offer, please copy and paste this link into your browser:
<https://www.edgerealty.com.au/buying/make-an-offer/>

Mike Lao, Tyson Bennett and Edge Realty RLA256385 are proud to present to the market this modern well-maintained home with three bedrooms, one bathroom and an open plan living area. The home is located on a low maintenance 234sqm lot within a quiet, family-friendly street.

Arriving at the property you'll be greeted by a neat and tidy

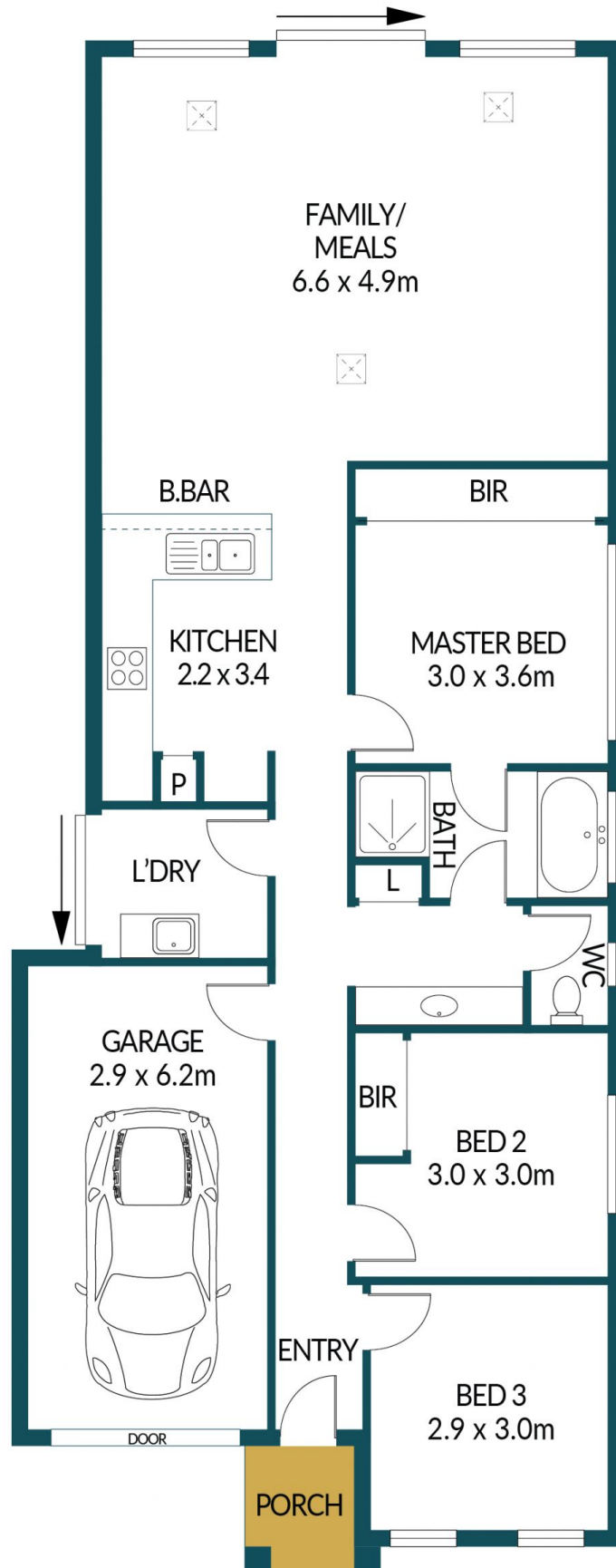
Price : \$ 430,000
Building Size : 109 sqm
Land Size : 234 sqm
View : <https://www.edgerealty.com.au/sale/sa/north-north-east-suburbs/smithfield-plains/residential/house/7751365>



Mike Lao
0410390250



Tyson Bennett
0437161997



2 GUM TREE WALK, SMITHFIELD PLAINS

Disclaimer

Plans shown are for marketing purposes only. All dimensions are approximate and not to scale. They are subject to errors and inaccuracies and no liability will be accepted. Interested parties should make their own enquiries. Inclusions and exclusions must be confirmed in the Residential Contract.

APPROXIMATE DIMENSIONS

LIVING:	109.6m ²
GARAGE:	17.9m ²
PORCH:	2.3m ²
TOTAL:	129.8m ²