



## 14 Webster Street DAVOREN PARK SA

4 2 1

\*For an in-depth look at this home, please click on the 3D tour for a virtual walk-through or copy and paste this link into your browser\*

Virtual Tour Link:  
<https://my.matterport.com/show/?m=wUQsvaR7foT>

To submit an offer, please copy and paste this link into your browser:  
<https://www.edgerealty.com.au/buying/make-an-offer/>

Mike Lao, Tyson Bennett and Edge Realty RLA256385 are proud to present to the market this brand new sleek, stylish and spacious Fairmont property on a desirable corner block, ready for you to move in and enjoy. Designed to offer the very best in modern living, the lucky new owners of this stunning home will enjoy all the contemporary comforts you could ever wish for along with an unbeatable

**Price** : \$ 550,010  
**Building Size** : 141 sqm  
**Land Size** : 348 sqm  
**View** : <https://www.edgerealty.com.au/sale/sa/north-north-east-suburbs/davoren-park/residential/house/7832413>



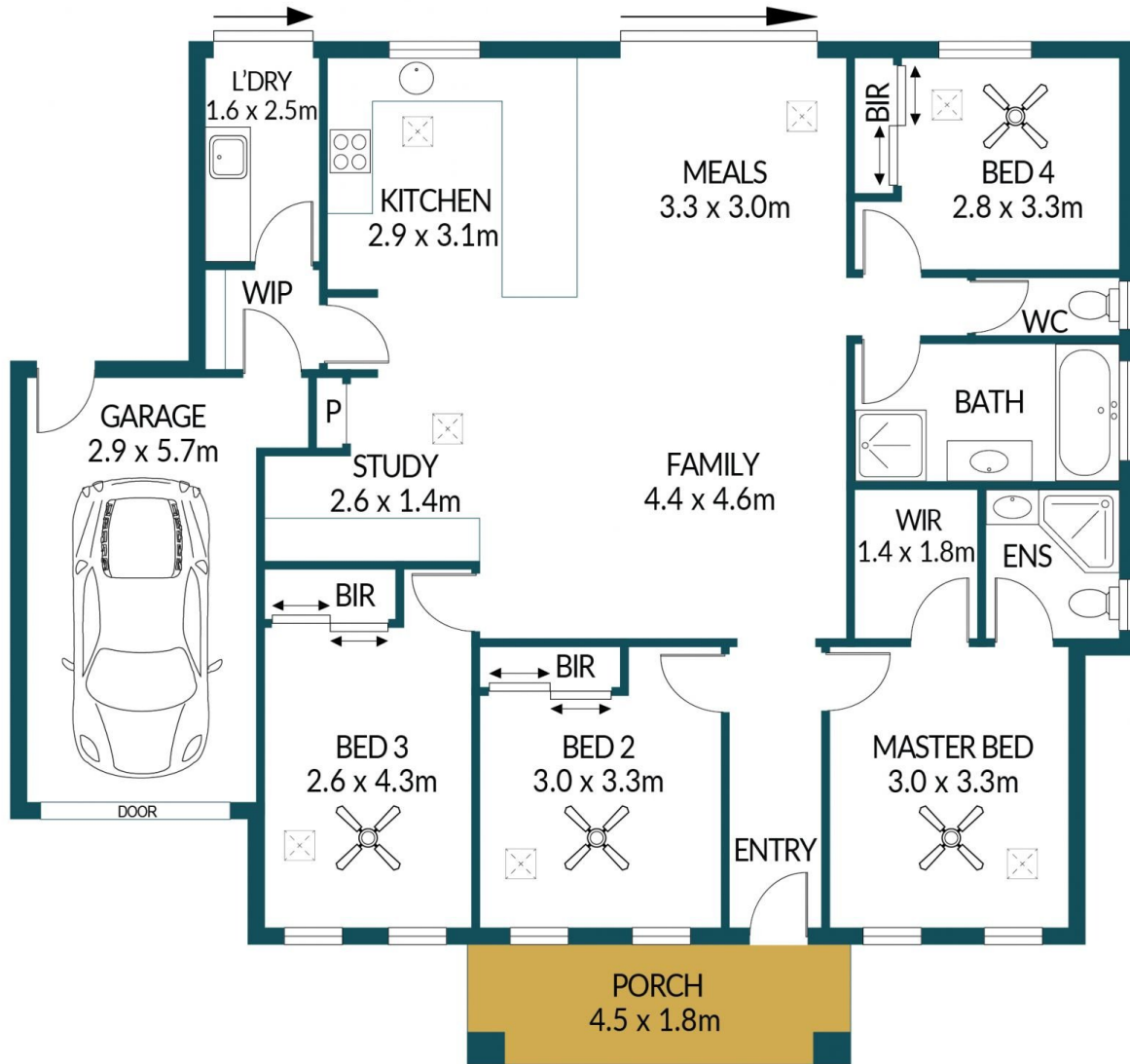
**Mike Lao**  
0410390250



**Tyson Bennett**  
0437161997



WT



## 14 WEBSTER STREET, DAVOREN PARK

### Disclaimer

Plans shown are for marketing purposes only. All dimensions are approximate and not to scale. They are subject to errors and inaccuracies and no liability will be accepted. Interested parties should make their own enquiries. Inclusions and exclusions must be confirmed in the Residential Contract.

### APPROXIMATE DIMENSIONS

LIVING:	117.0m <sup>2</sup>
GARAGE:	16.5m <sup>2</sup>
PORCH:	8.1m <sup>2</sup>
TOTAL:	141.6m <sup>2</sup>