



## 14 Cooradilla Drive SALISBURY PARK SA

4 1 1

\*For an in-depth look at this home, please click on the 3D tour for a virtual walk-through or copy and paste this link into your browser\*

Virtual <https://my.matterport.com/show/?m=HLk9TfGTmRk> Tour Link:

To submit an offer, please copy and paste this link into your browser:  
<https://www.edgerealty.com.au/buying/make-an-offer/>

Mike Lao, Tyson Bennett and Edge Realty RLA256385 are proud to present to the market this beautiful four bedroom solid brick abode. Full of bright interior spaces, a wonderful outdoor area, and in a location with fantastic shopping, transport and more; this is a home sure not to stay on the market for long.

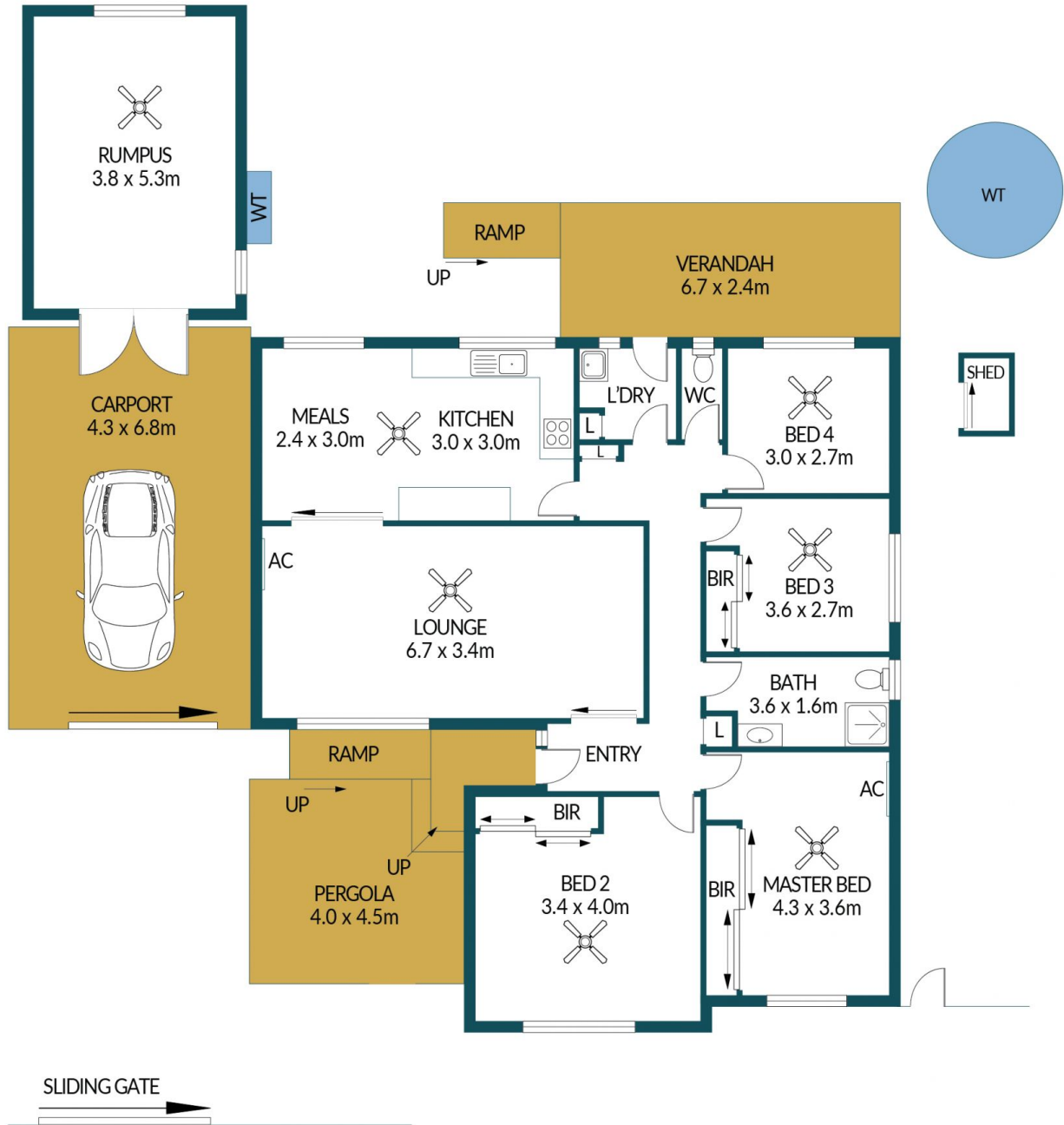
**Price** : \$ 598,000  
**Building Size** : 142 sqm  
**Land Size** : 604.4 sqm  
**View** : <https://www.edgerealty.com.au/sale/sa/north-north-east-suburbs/salisbury-park/residential/house/7838705>



**Mike Lao**  
0410390250



**Tyson Bennett**  
0437161997



## 14 COORADILLA DRIVE, SALISBURY PARK

### Disclaimer

Plans shown are for marketing purposes only. All dimensions are approximate and not to scale. They are subject to errors and inaccuracies and no liability will be accepted. Interested parties should make their own enquiries. Inclusions and exclusions must be confirmed in the Residential Contract.

### APPROXIMATE DIMENSIONS

LIVING:	142.7m <sup>2</sup>
VERANDAH:	16.1m <sup>2</sup>
PERGOLA:	18.0m <sup>2</sup>
CARPORT:	29.2m <sup>2</sup>
TOTAL:	209.5m <sup>2</sup>