



5 Kent Avenue BRAHMA LODGE SA

3 1 1

For an in-depth look at this home, please click on the 3D tour for a virtual walk-through or copy and paste this link into your browser

Virtual Tour Link:
<https://my.matterport.com/show/?m=H2SnLbAYHGH>

To submit an offer, please copy and paste this link into your browser:
<https://www.edgerealty.com.au/buying/make-an-offer/>

Mike Lao, Brendon Ly and Edge Realty RLA256385 are proud to present to the market a beautifully renovated home offering a life of comfort and convenience to its new owners. Set on a 724sqm block, this single-level easy care abode features three bedrooms, one bathroom, an open plan living area and large backyard to satisfy all your lifestyle needs.

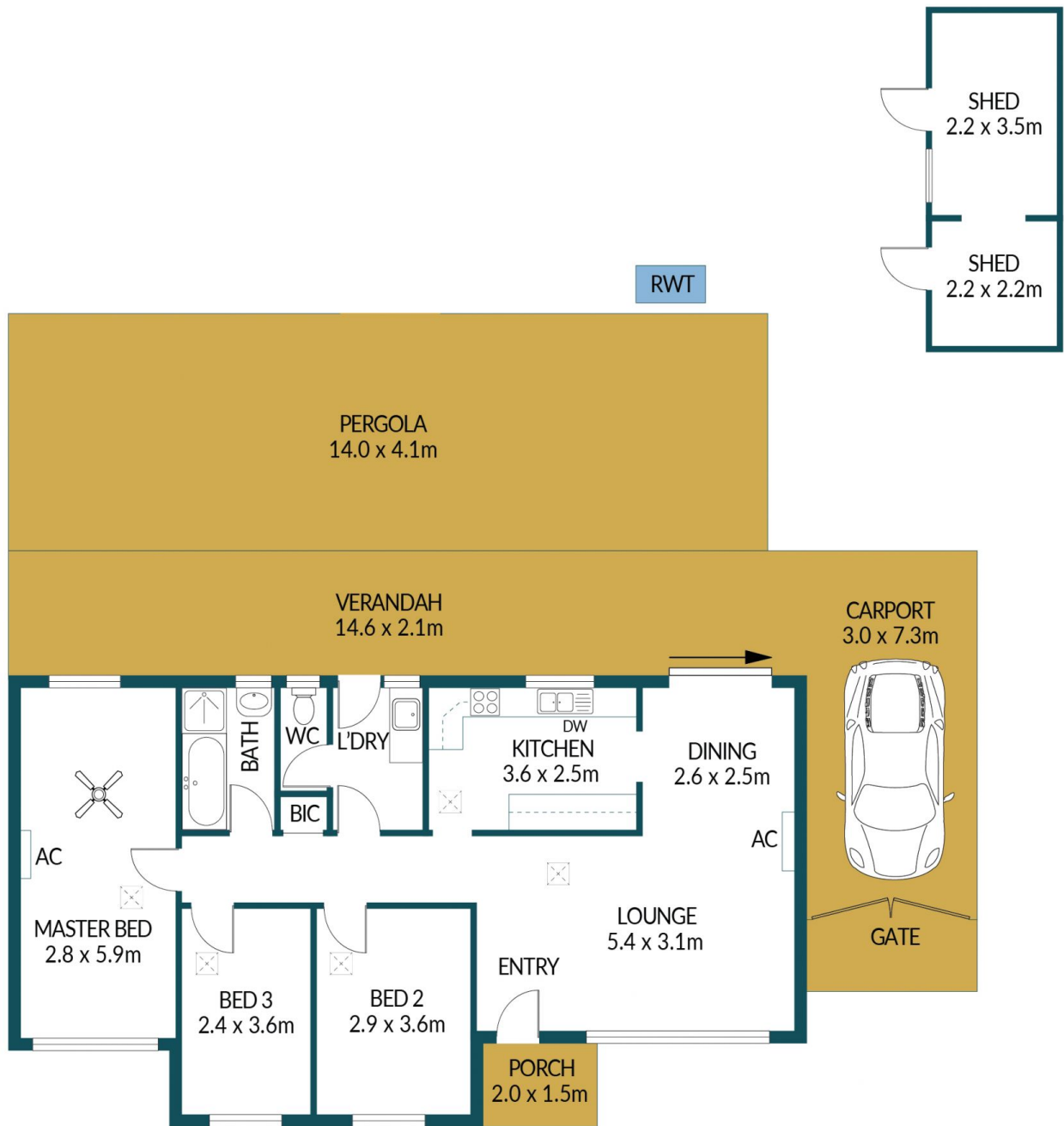
Price : \$ 565,000
Building Size : 211 sqm
Land Size : 724.6 sqm
View : <https://www.edgerealty.com.au/sale/sa/north-north-east-suburbs/brhma-lodge/residential/house/7840327>



Mike Lao
0410390250



Brendon Ly
0447888444



5 KENT AVENUE, BRAHMA LODGE

Disclaimer

Plans shown are for marketing purposes only. All dimensions are approximate and not to scale. They are subject to errors and inaccuracies and no liability will be accepted. Interested parties should make their own enquiries. Inclusions and exclusions must be confirmed in the Residential Contract.

APPROXIMATE DIMENSIONS	
LIVING:	86.3m ²
CARPORT/VERANDAH:	52.6m ²
PORCH/PERGOLA:	60.4m ²
SHED:	12.5m ²
TOTAL:	211.8m ²