



## 21 Blackham Crescent SMITHFIELD PLAINS SA

3 1 5

\*For an in-depth look at this home, please click on the 3D tour for a virtual walk-through or copy and paste this link into your browser\*

Virtual <https://my.matterport.com/show/?m=iRbALfjpPFD> Tour Link:

To submit an offer, please copy and paste this link into your browser:  
<https://www.edgerealty.com.au/buying/make-an-offer/>

Mike Lao, Tyson Bennett and Edge Realty RLA256385 are proud to present to the market this generous 3-bedroom property where a sought-after setting, sublime style and superior space all come together in one neat package to create a home you'll be proud to call your own.

The layout has been designed for those in need of room to

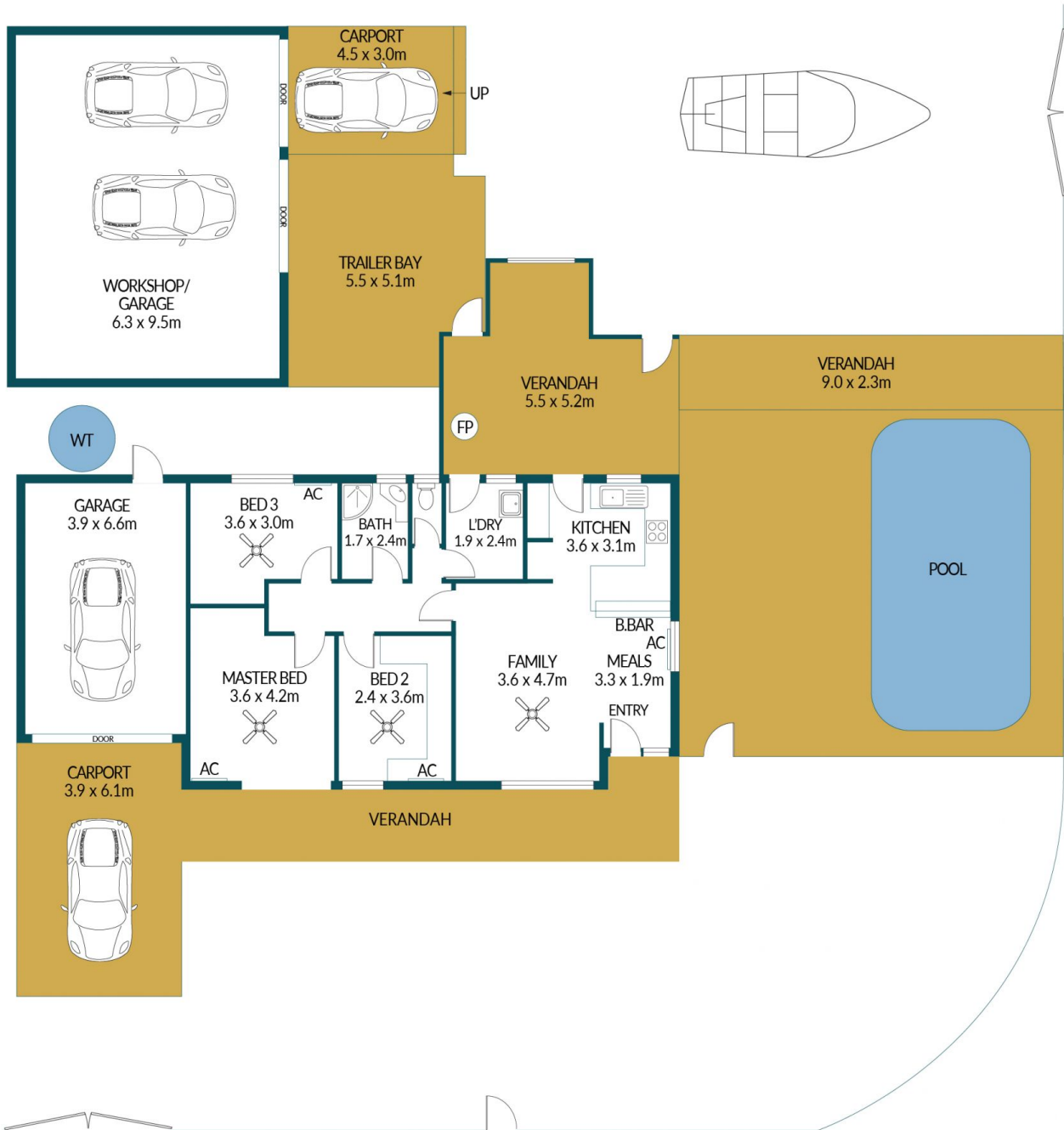
**Price** : \$ 475,000  
**Building Size** : 79 sqm  
**Land Size** : 732 sqm  
**View** : <https://www.edgerealty.com.au/sale/sa/north-north-east-suburbs/smithfield-plains/residential/house/7850871>



**Mike Lao**  
0410390250



**Tyson Bennett**  
0437161997



## 21 BLACKHAM CRESCENT SMITHFIELD PLAINS

### Disclaimer

Plans shown are for marketing purposes only. All dimensions are approximate and not to scale. They are subject to errors and inaccuracies and no liability will be accepted. Interested parties should make their own enquiries. Inclusions and exclusions must be confirmed in the Residential Contract.

### APPROXIMATE DIMENSIONS

LIVING:	79.6m <sup>2</sup>
GARAGE/WORKSHOP:	85.5m <sup>2</sup>
VERANDAH/CARPORT:	80.3m <sup>2</sup>
TRAILER BAY:	20.5m <sup>2</sup>
TOTAL:	265.9m <sup>2</sup>