

17 Carob Crescent CRAIGMORE SA

3  1  2 

For an in-depth look at this home, please click on the 3D tour for a virtual walk-through or copy and paste this link into your browser

Virtual Tour Link:
<https://my.matterport.com/show/?m=jyT3pQqqrR2>

To submit an offer, please copy and paste this link into your browser:
<https://www.edgerealty.com.au/buying/make-an-offer/>

Mike Lao, Tyson Bennett and Edge Realty RLA256385 are proud to present to the market this gorgeous character-filled family home well loved by its current occupiers and ready for a new family to move in and start making memories. A selection of formal and informal living spaces is spread throughout the 889sqm block backing onto Smith Creek and Craigmore Park. Whether you're

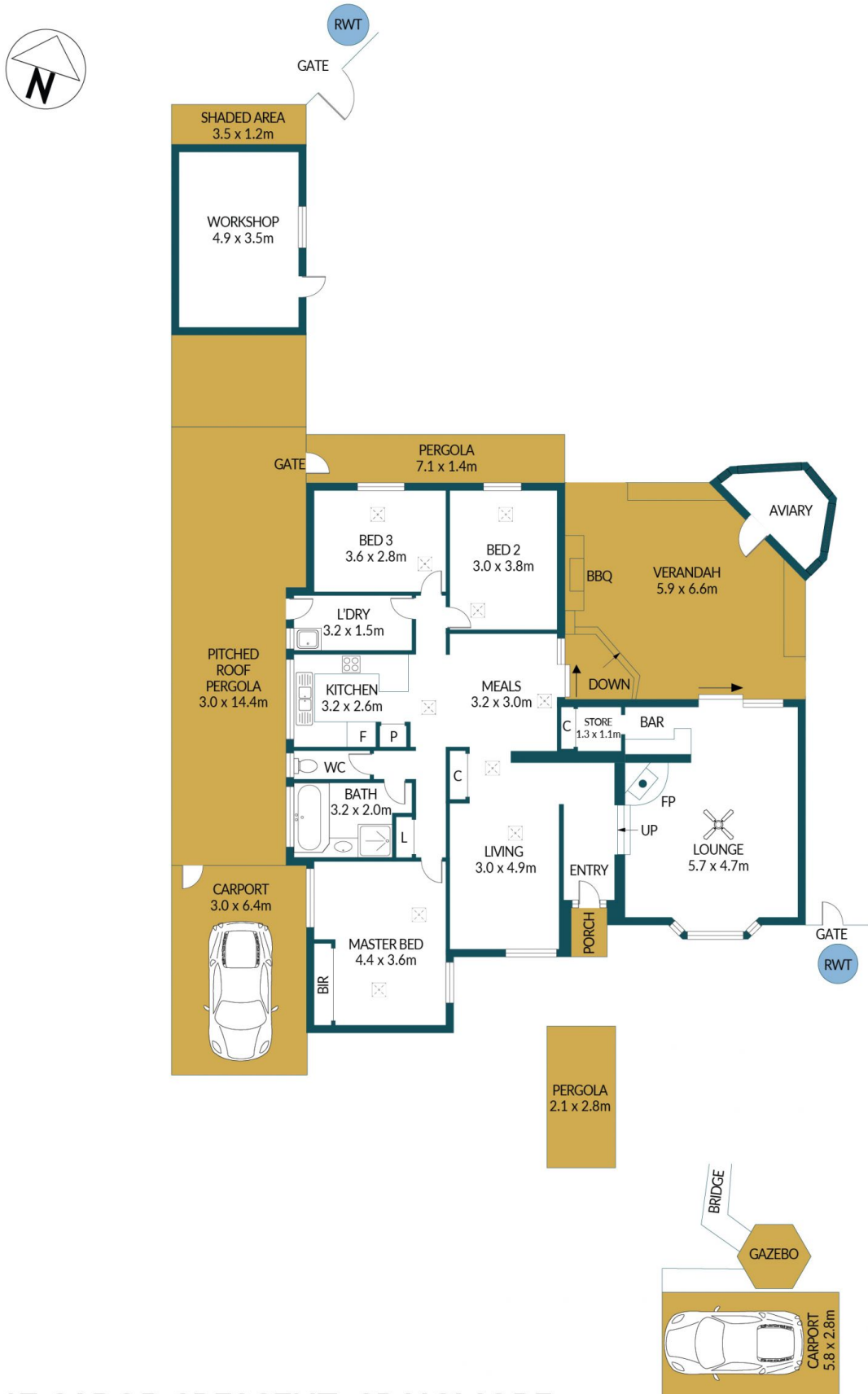
Price : \$ 612,000
Building Size : 131 sqm
Land Size : 889 sqm
View : <https://www.edgerealty.com.au/sale/sa/north-north-east-suburbs/craigmore/residential/house/7862000>



Mike Lao
0410390250



Tyson Bennett
0437161997



17 CAROB CRESCENT, CRAIGMORE

Disclaimer

Plans shown are for marketing purposes only. All dimensions are approximate and not to scale. They are subject to errors and inaccuracies and no liability will be accepted. Interested parties should make their own enquiries. Inclusions and exclusions must be confirmed in the Residential Contract.

APPROXIMATE DIMENSIONS

LIVING:	131.6m ²
CARPORT/PORCH:	37.2m ²
PERGOLA/AVIARY:	64.2m ²
WORKSHOP/GAZEBO:	21.2m ²
VERANDAH:	38.9m ²
TOTAL:	293.1m ²