



89 Crittenden Road SMITHFIELD PLAINS SA

3 1 1

For an in-depth look at this home, please click on the 3D tour for a virtual walk-through or copy and paste this link into your browser

Virtual <https://my.matterport.com/show/?m=qq3qh5Gdoy5> Tour Link:

To submit an offer, please copy and paste this link into your browser:
<https://www.edgerealty.com.au/buying/make-an-offer/>

Mike Lao, Tyson Bennett and Edge Realty RLA256385 are proud to present to the market this delightful easy-care corner block home next to Crittenden Reserve that's sure to appeal to a wide range of buyers. Whether you are a first home buyer or family looking for a place to call home or perhaps a savvy investor planning is to sit back and enjoy the returns, now is the time to buy and secure your future.

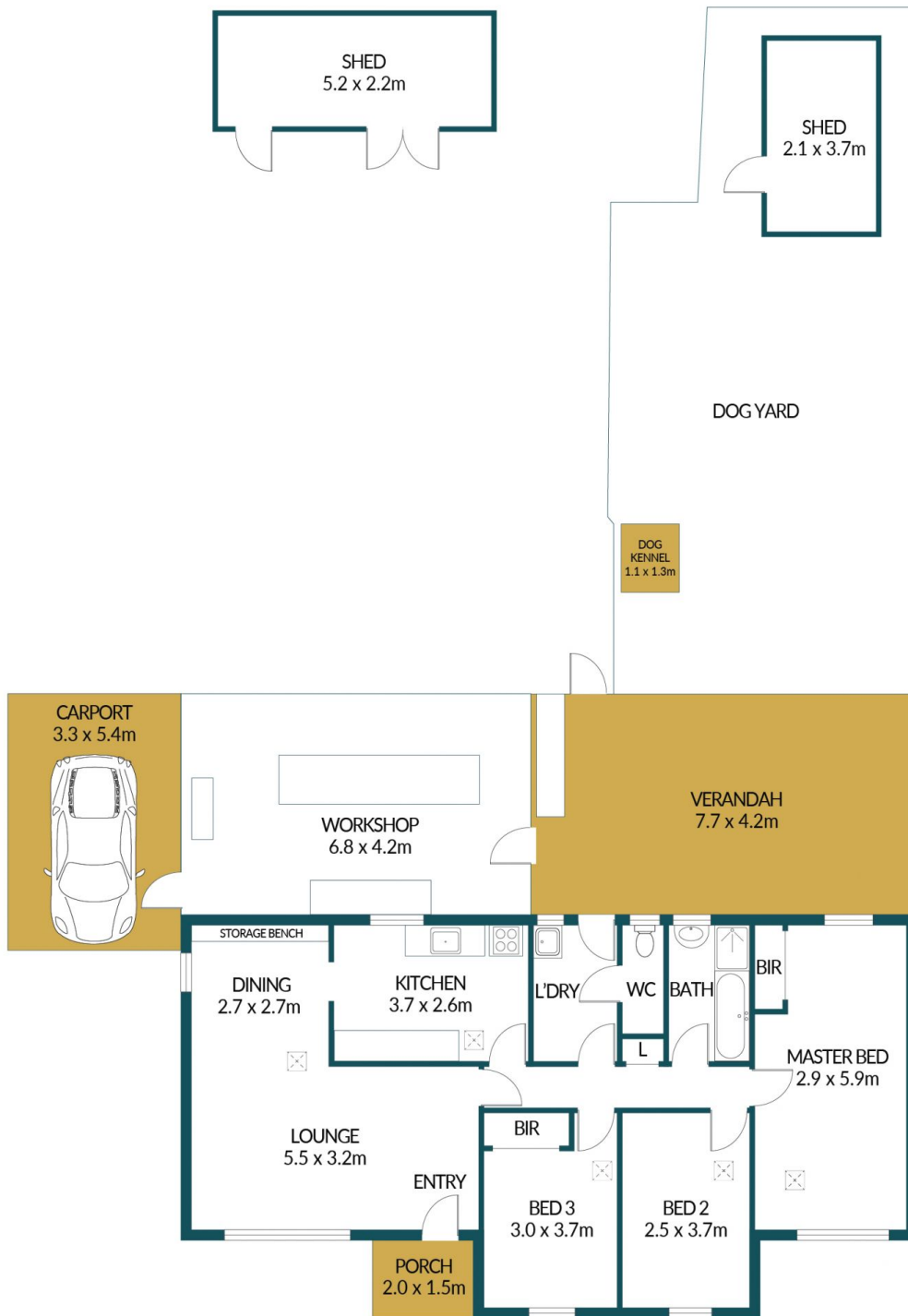
Building Size : 96 sqm
Land Size : 720 sqm
View : <https://www.edgerealty.com.au/sale/sa/north-north-east-suburbs/smithfield-plains/residential/house/7862094>



Mike Lao
0410390250



Tyson Bennett
0437161997



89 CRITTENDEN ROAD, SMITHFIELD PLAINS

Disclaimer

Plans shown are for marketing purposes only. All dimensions are approximate and not to scale. They are subject to errors and inaccuracies and no liability will be accepted. Interested parties should make their own enquiries. Inclusions and exclusions must be confirmed in the Residential Contract.

APPROXIMATE DIMENSIONS

LIVING:	96.0m ²
VERANDAH:	32.3m ²
WORKSHOP:	28.6m ²
CARPORT:	17.8m ²
SHED:	19.2m ²
PORCH:	3.0m ²
TOTAL:	196.9m ²