



## 16 Weatherstone Crescent MAWSON LAKES SA

3 2 1

\*For an in-depth look at this home, please click on the 3D tour for a virtual walk-through or copy and paste this link into your browser\*

Virtual Tour Link: <https://shorturl.at/joHQ7>

Please note that the property is currently tenanted with a fixed lease until 13/12/2024 returning \$470 per week.

To submit an offer, please copy and paste this link into your browser:

<https://www.edgerealty.com.au/buying/make-an-offer/>

Mike Lao, Brendon Ly and Edge Realty RLA256385 are proud to present to the market this stunning home designed to offer the very best in low-maintenance modern living. The lucky new owners of this delightful home will enjoy all the contemporary comforts you could ever wish for

**Price** : \$ 644,500  
**Building Size** : 109 sqm  
**Land Size** : 267 sqm  
**View** : <https://www.edgerealty.com.au/sale/sa/north-north-east-suburbs/mawson-lakes/residential/house/7865497>



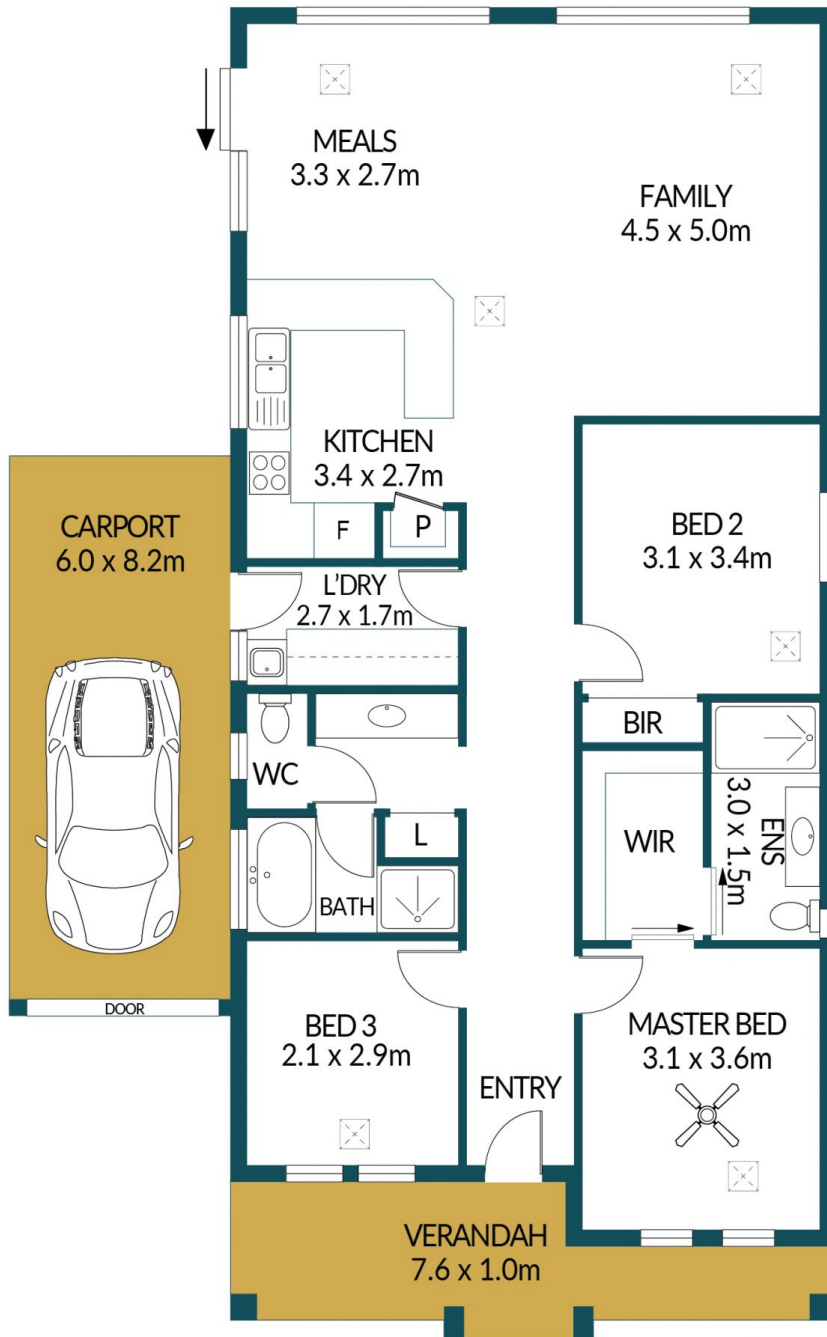
**Mike Lao**  
0410390250



**Brendon Ly**  
0447888444



SHED  
1.6 x 1.6m



## 16 WEATHERSTONE CRESCENT, MAWSON LAKES

### Disclaimer

Plans shown are for marketing purposes only. All dimensions are approximate and not to scale. They are subject to errors and inaccuracies and no liability will be accepted. Interested parties should make their own enquiries. Inclusions and exclusions must be confirmed in the Residential Contract.

### APPROXIMATE DIMENSIONS

|           |                     |
|-----------|---------------------|
| LIVING:   | 109.6m <sup>2</sup> |
| CARPOR:   | 49.2m <sup>2</sup>  |
| VERANDAH: | 11.3m <sup>2</sup>  |
| SHED:     | 2.5m <sup>2</sup>   |
| TOTAL:    | 172.6m <sup>2</sup> |