

## 6 Santin Avenue KIDMAN PARK SA

4  2  2 

\*For an in-depth look at this home, please click on the 3D tour for a virtual walk-through or copy and paste this link into your browser\*

Virtual Tour Link:  
<https://my.matterport.com/show/?m=sFE6eo4ktq4>

Auction: Sunday the 4th of February 2024 onsite at 2:40pm  
 (Unless Sold Prior)

To submit an offer, please copy and paste this link into your browser:  
<https://www.edgerealty.com.au/buying/make-an-offer/>

Mike Lao, Tyson Bennett and Edge Realty RLA256385 are proud to present to the market this grand property that sets a new standard in prestigious family living. A selection of formal and informal living spaces are spread throughout the

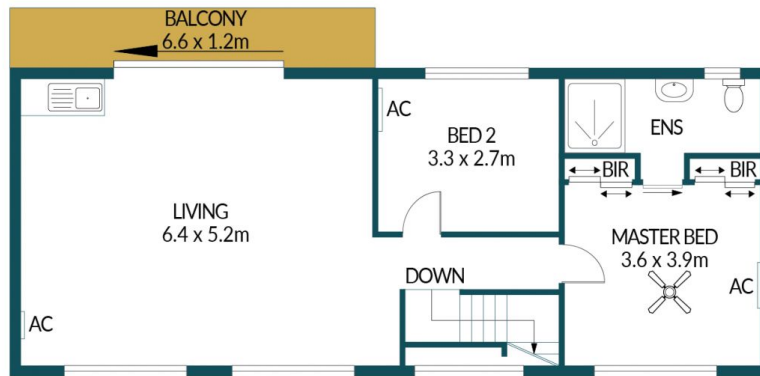
**Price** : \$ 1,080,000  
**Building Size** : 363 sqm  
**Land Size** : 571.92 sqm  
**View** : <https://www.edgerealty.com.au/sale/sa/western-beachside-suburbs/kidman-par-k/residential/house/7875441>



**Mike Lao**  
 0410390250



**Tyson Bennett**  
 0437161997



FIRST FLOOR



GROUND FLOOR

## 6 SANTIN AVENUE, KIDMAN PARK

### Disclaimer

Plans shown are for marketing purposes only. All dimensions are approximate and not to scale. They are subject to errors and inaccuracies and no liability will be accepted. Interested parties should make their own enquiries. Inclusions and exclusions must be confirmed in the Residential Contract.

### APPROXIMATE DIMENSIONS

LIVING:	242.0m <sup>2</sup>
GARAGE/CARPORT:	52.2m <sup>2</sup>
BALCONY:	7.9m <sup>2</sup>
VERANDAH/SHADED:	61.4m <sup>2</sup>
TOTAL:	363.5m <sup>2</sup>