



52 Petherton Road DAVOREN PARK SA

3  1  1 

For an in-depth look at this home, please click on the 3D tour for a virtual walk-through or copy and paste this link into your browser

Virtual Tour
Link: <https://my.matterport.com/show/?m=mrmpsp4eQ36>

To submit an offer, please copy and paste this link into your browser:
<https://www.edgerealty.com.au/buying/make-an-offer/>

Mike Lao, Brendon Ly and Edge Realty RLA256385 are proud to present to the market this humble 3-bedroom, 1.5 bathroom home that will delight first-time buyers, young families and eagle-eyed investors alike, all set on approximately 680sqm of land opposite Kalara Reserve with Andrews Farm Cricket and Soccer clubs.

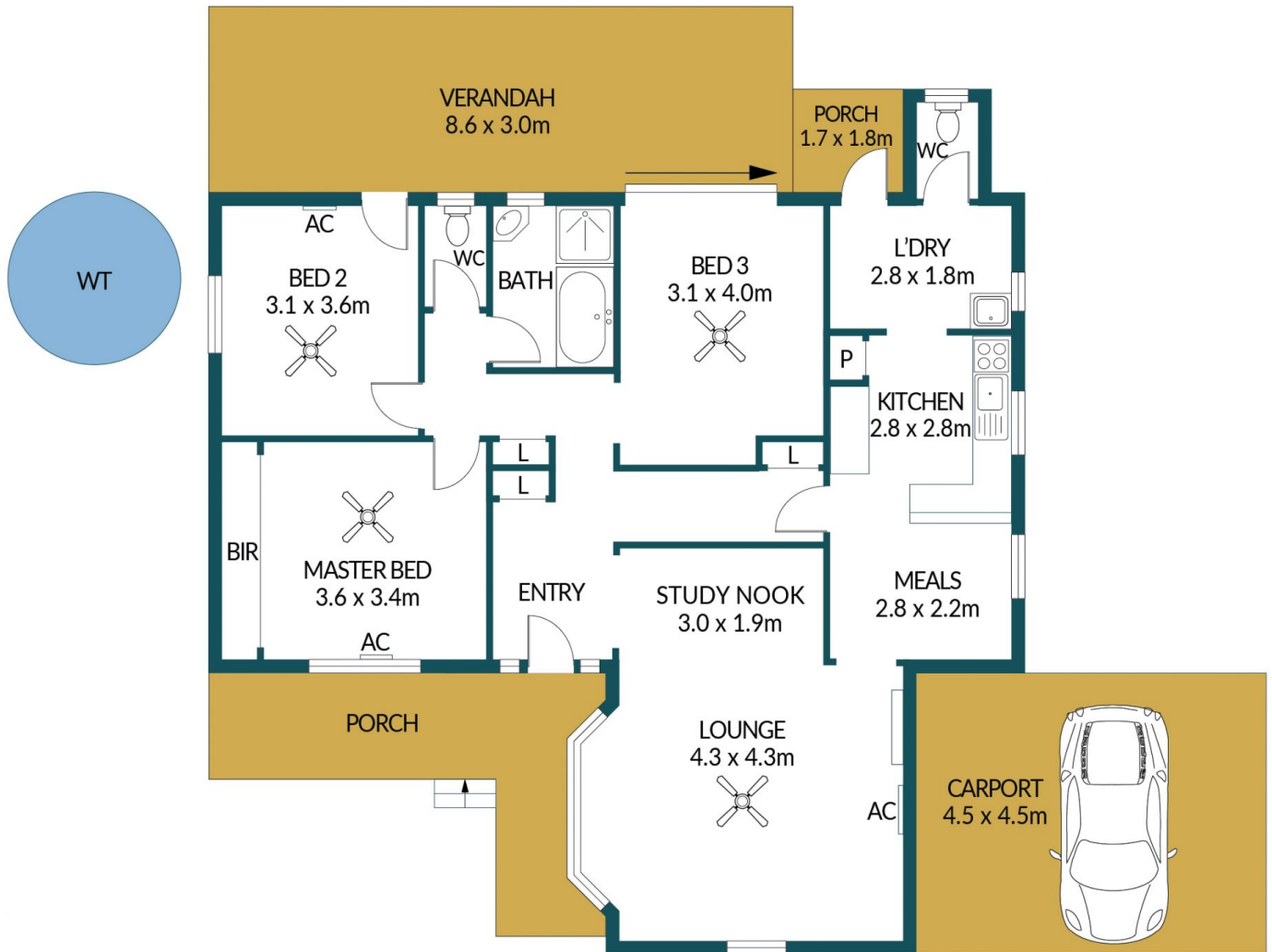
Price : \$ 450,000
Building Size : 113 sqm
Land Size : 680 sqm
View : <https://www.edgerealty.com.au/sale/sa/north-north-east-suburbs/davoren-park/residential/house/7875515>



Mike Lao
0410390250



Brendon Ly
0447888444



52 PETHERTON ROAD, DAVOREN PARK

Disclaimer

Plans shown are for marketing purposes only. All dimensions are approximate and not to scale. They are subject to errors and inaccuracies and no liability will be accepted. Interested parties should make their own enquiries. Inclusions and exclusions must be confirmed in the Residential Contract.

APPROXIMATE DIMENSIONS

LIVING:	113.7m ²
CARPORT:	20.3m ²
PORCH:	17.7m ²
VERANDAH:	17.4m ²
TOTAL:	169.1m ²