



6 Osler Street ELIZABETH VALE SA

3 1 3

For an in-depth look at this home, please click on the 3D tour for a virtual walk-through or copy and paste this link into your browser

Virtual Tour Link:
<https://my.matterport.com/show/?m=NRgw4DzLhtd>

To submit an offer, please copy and paste this link into your browser:
<https://www.edgerealty.com.au/buying/make-an-offer/>

Mike Lao, Brendon Ly and Edge Realty RLA256385 are proud to present to the market this charming family home set within a family-friendly pocket of Elizabeth Vale. Placed on 673sqm of land, this three-bedroom, one-bathroom home is within walking distance to the local shops, Lyell McEwin Hospital, public transport links and more, ensuring a life of convenience.

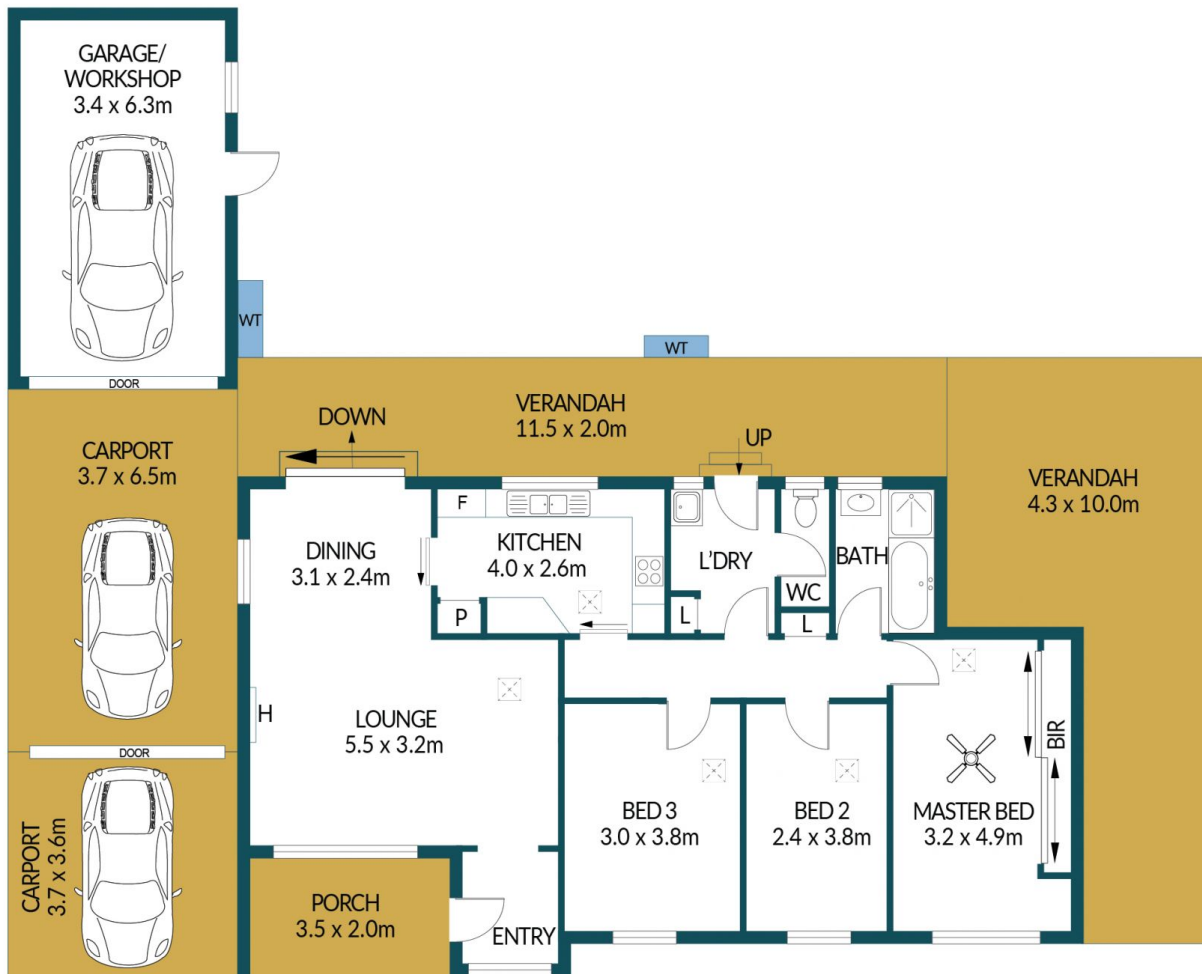
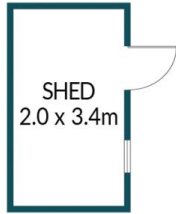
Price : \$ 550,000
Building Size : 92 sqm
Land Size : 670 sqm
View : <https://www.edgerealty.com.au/sale/sa/north-north-east-suburbs/elizabeth-vale/residential/house/7883649>



Mike Lao
0410390250



Brendon Ly
0447888444



6 OSLER STREET, ELIZABETH VALE

Disclaimer

Plans shown are for marketing purposes only. All dimensions are approximate and not to scale. They are subject to errors and inaccuracies and no liability will be accepted. Interested parties should make their own enquiries. Inclusions and exclusions must be confirmed in the Residential Contract.

APPROXIMATE DIMENSIONS

LIVING:	92.3m ²
GARAGE/SHED:	28.2m ²
PORCH/VERANDAH:	60.2m ²
CARPORT:	37.4m ²
TOTAL:	218.1m ²