



7 Carstairs Lane SMITHFIELD PLAINS SA

3  2  1 

For an in-depth look at this home, please click on the 3D tour for a virtual walk-through or copy and paste this link into your browser

Virtual Tour Link:
<https://my.matterport.com/show/?m=UqCcYUKQUQ5>

To submit an offer, please copy and paste this link into your browser:

<https://www.edgerealty.com.au/buying/make-an-offer/>

Mike Lao, Brendon Ly and Edge Realty RLA256385 are proud to present to the market this sleek, stylish and surprisingly spacious property, ready for you to move in and enjoy. Designed to offer the very best in modern living, the lucky new owners of this stunning home will enjoy all the contemporary comforts you could ever wish for along with an unbeatable location just a few steps from the local

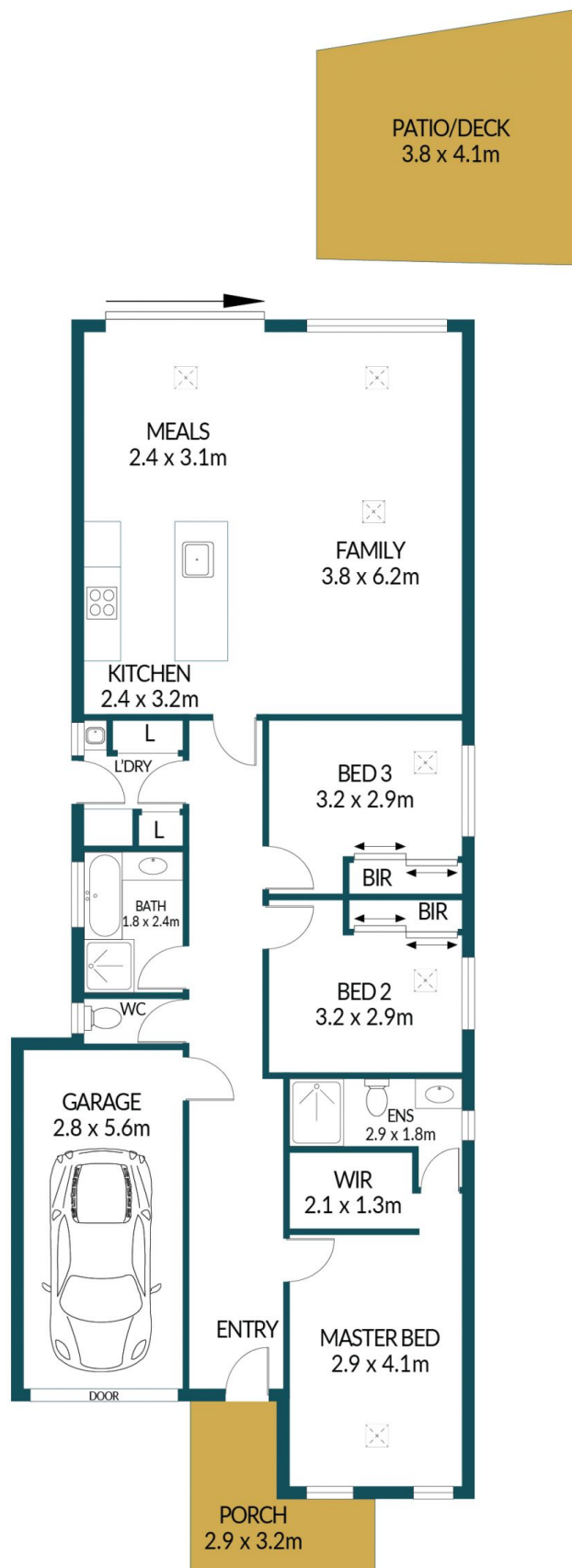
Price : \$ 471,000
Building Size : 110 sqm
Land Size : 270 sqm
View : <https://www.edgerealty.com.au/sale/sa/north-north-east-suburbs/smithfield-plains/residential/house/7895089>



Mike Lao
 0410390250



Brendon Ly
 0447888444



7 CARSTAIRS LANE, SMITHFIELD PLAINS

Disclaimer

Plans shown are for marketing purposes only. All dimensions are approximate and not to scale. They are subject to errors and inaccuracies and no liability will be accepted. Interested parties should make their own enquiries. Inclusions and exclusions must be confirmed in the Residential Contract.

APPROXIMATE DIMENSIONS

LIVING:	110.4m ²
GARAGE:	15.7m ²
PORCH:	9.3m ²
PATIO/DECK:	15.6m ²
TOTAL:	151.0m ²