



4 Walditch Street ELIZABETH DOWNS SA

3  1  2 

For an in-depth look at this home, please click on the 3D tour for a virtual walk-through or copy and paste this link into your browser

Virtual Tour Link:
<https://my.matterport.com/show/?m=X6gGuguYDPc>

To submit an offer, please copy and paste this link into your browser:
<https://www.edgerealty.com.au/buying/make-an-offer/>

Mike Lao, Brendon Ly and Edge Realty RLA256385 are proud to present to the market a sensational starter with spacious living spaces for entertaining or relaxing, and located within a quiet, family-friendly street, you'll slip into a life of ease at your new abode whether you're a savvy investor, first home buyer or a growing family.

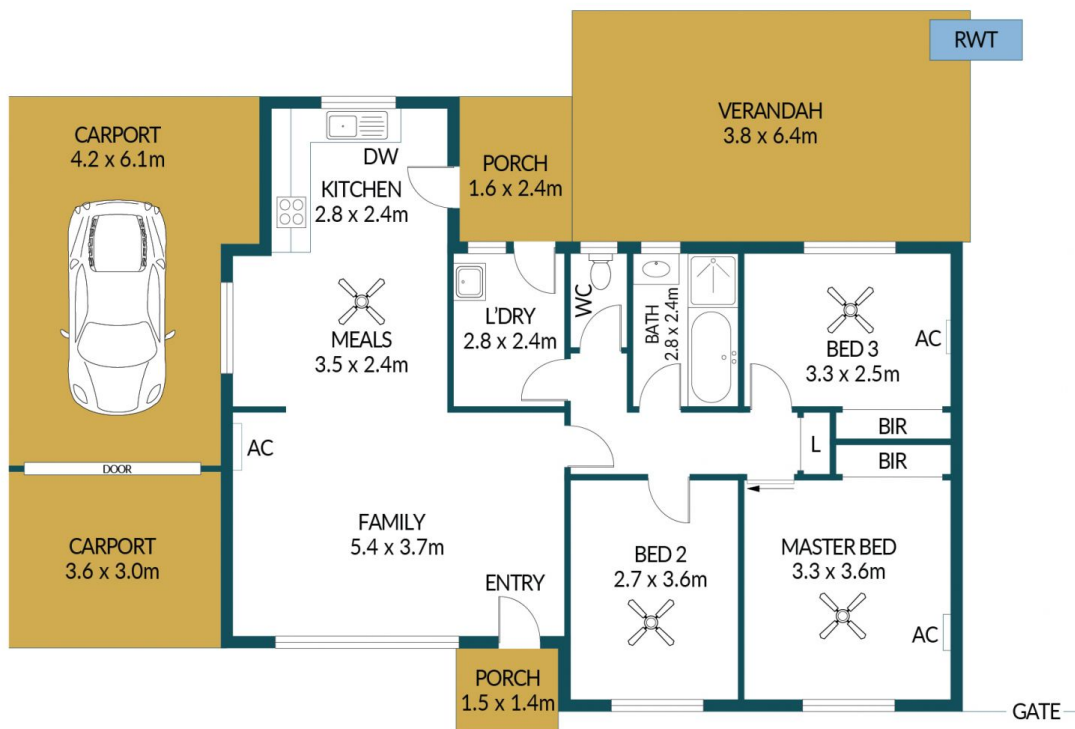
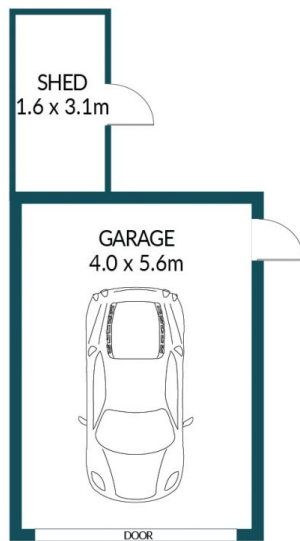
Price : \$ 485,000
Building Size : 100 sqm
Land Size : 630 sqm
View : <https://www.edgerealty.com.au/sale/sa/north-north-east-suburbs/elizabeth-downs/residential/house/7895643>



Mike Lao
0410390250



Brendon Ly
0447888444



4 WALDITCH STREET, ELIZABETH DOWNS

Disclaimer

Plans shown are for marketing purposes only. All dimensions are approximate and not to scale. They are subject to errors and inaccuracies and no liability will be accepted. Interested parties should make their own enquiries. Inclusions and exclusions must be confirmed in the Residential Contract.

APPROXIMATE DIMENSIONS

LIVING:	100.9m ²
GARAGE:	22.4m ²
PORCH/VERANDAH:	30.2m ²
CARPORT/SHED:	41.4m ²
TOTAL:	194.9m ²