



62 Crittenden Road SMITHFIELD PLAINS SA

3  1  2 

For an in-depth look at this home, please click on the 3D tour for a virtual walk-through or copy and paste this link into your browser

Virtual Tour Link:
<https://my.matterport.com/show/?m=tKwdyZYsoZd>

To submit an offer, please copy and paste this link into your browser:
<https://www.edgerealty.com.au/buying/make-an-offer/>

Mike Lao, Tyson Bennett and Edge Realty RLA256385 are proud to present to the market this easy-care sanctuary with a list of must have features that's sure to appeal to a wide range of buyers. With three bedrooms, an open plan living area and great outdoor entertaining area, this home offers plenty of space to satisfy all your lifestyle needs.

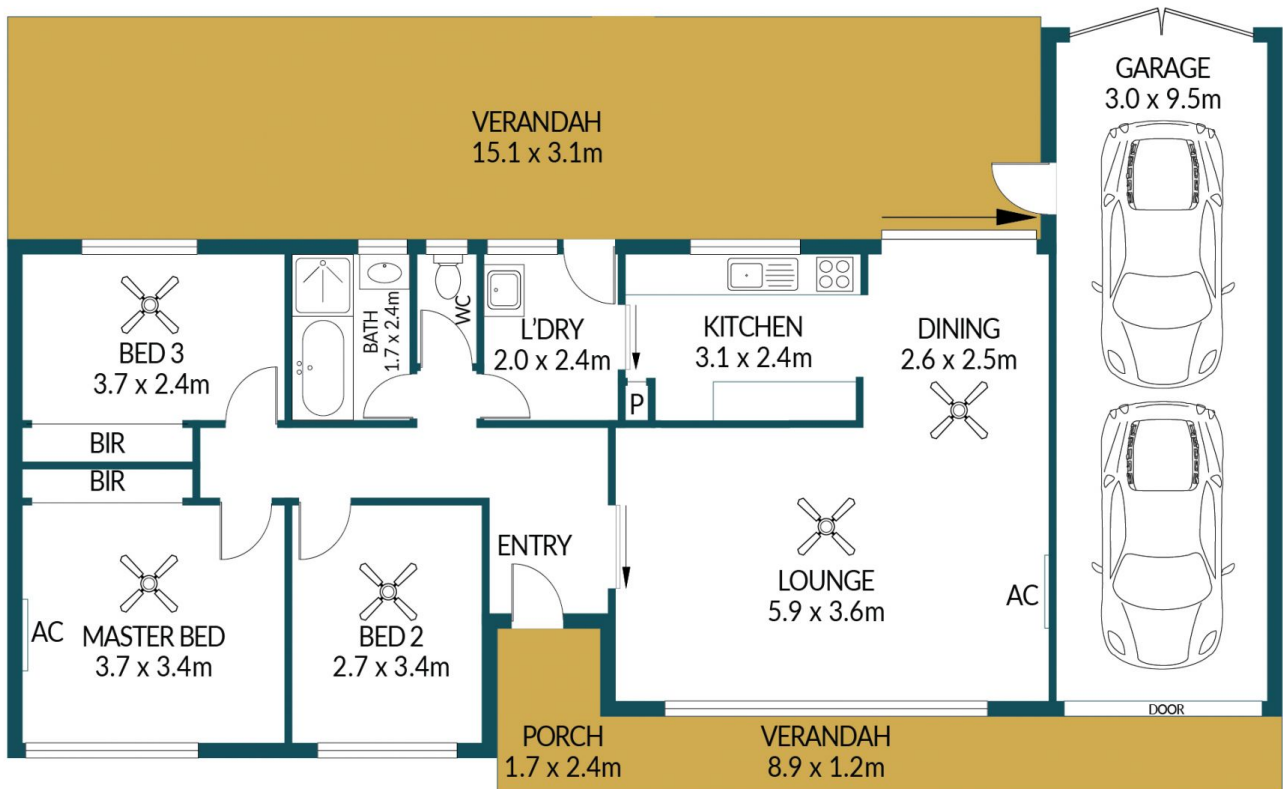
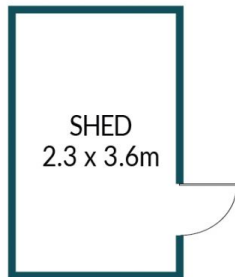
Price : \$ 496,000
Building Size : 94 sqm
Land Size : 700 sqm
View : <https://www.edgerealty.com.au/sale/sa/north-north-east-suburbs/smithfield-plains/residential/house/7903840>



Mike Lao
0410390250



Tyson Bennett
0437161997



62 CRITTENDEN ROAD, SMITHFIELD PLAINS

Disclaimer

Plans shown are for marketing purposes only. All dimensions are approximate and not to scale. They are subject to errors and inaccuracies and no liability will be accepted. Interested parties should make their own enquiries. Inclusions and exclusions must be confirmed in the Residential Contract.

APPROXIMATE DIMENSIONS

LIVING:	94.6m ²
GARAGE:	28.5m ²
VERANDAH:	57.5m ²
PORCH/SHED:	10.1m ²
TOTAL:	190.7m ²