



**40 Trinity Court ANDREWS FARM SA**

3 2 2

\*For an in-depth look at this home, please click on the 3D tour for a virtual walk-through or copy and paste this link into your browser\*

Virtual <https://my.matterport.com/show/?m=qj4BeaScBFo> Tour Link:

To submit an offer, please copy and paste this link into your browser:  
<https://www.edgerealty.com.au/buying/make-an-offer/>

Mike Lao, Tyson Bennett and Edge Realty RLA256385 are proud to present to the market this spacious haven located within a peaceful enclave of Andrews Farm. You will enjoy a great outdoor entertaining area, good-size yard, three bedrooms, two bathrooms and easy access to everything this region has to offer. The property is currently tenanted returning \$420 per week on a periodic lease.

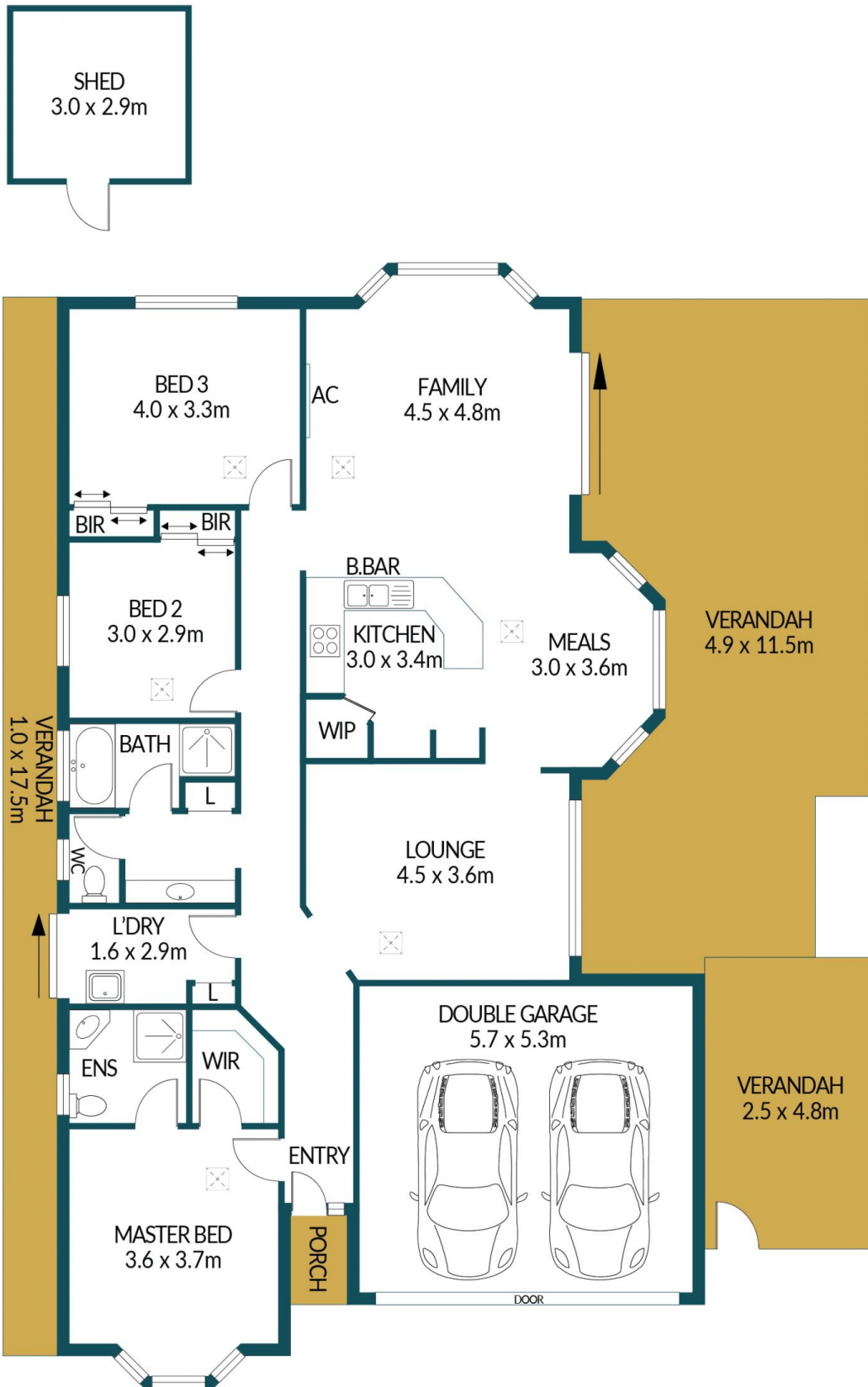
**Price** : \$ 555,000  
**Building Size** : 133 sqm  
**Land Size** : 450 sqm  
**View** : <https://www.edgerealty.com.au/sale/sa/north-north-east-suburbs/andrews-farm/residential/house/7914044>



**Mike Lao**  
0410390250



**Tyson Bennett**  
0437161997



## 40 TRINITY COURT, ANDREWS FARM

### Disclaimer

Plans shown are for marketing purposes only. All dimensions are approximate and not to scale. They are subject to errors and inaccuracies and no liability will be accepted. Interested parties should make their own enquiries. Inclusions and exclusions must be confirmed in the Residential Contract.

### APPROXIMATE DIMENSIONS

LIVING:	133.4m <sup>2</sup>
GARAGE:	30.2m <sup>2</sup>
PORCH/VERANDAH:	78.9m <sup>2</sup>
SHED:	8.7m <sup>2</sup>
TOTAL:	251.2m <sup>2</sup>