



17 Whitford Road ELIZABETH SOUTH SA

3 1 1

For an in-depth look at this home, please click on the 3D tour for a virtual walk-through or copy and paste this link into your browser

Virtual Tour Link: <https://shorturl.at/hMR04>

To submit an offer, please copy and paste this link into your browser:

<https://www.edgerealty.com.au/buying/make-an-offer/>

Mike Lao, Brendon Ly and Edge Realty RLA256385 are proud to present to the market an exciting property bustling with potential standing proud on a 960sqm corner block. With a 35m frontage, this property lends itself to a wide variety of development opportunities that could be investigated in conjunction with the local council.

This opportunity is too good to miss whether you have

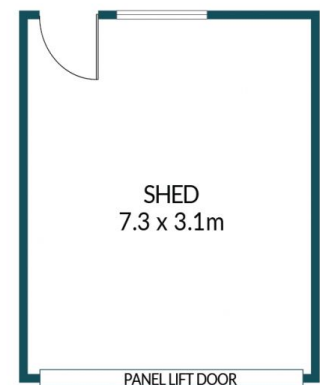
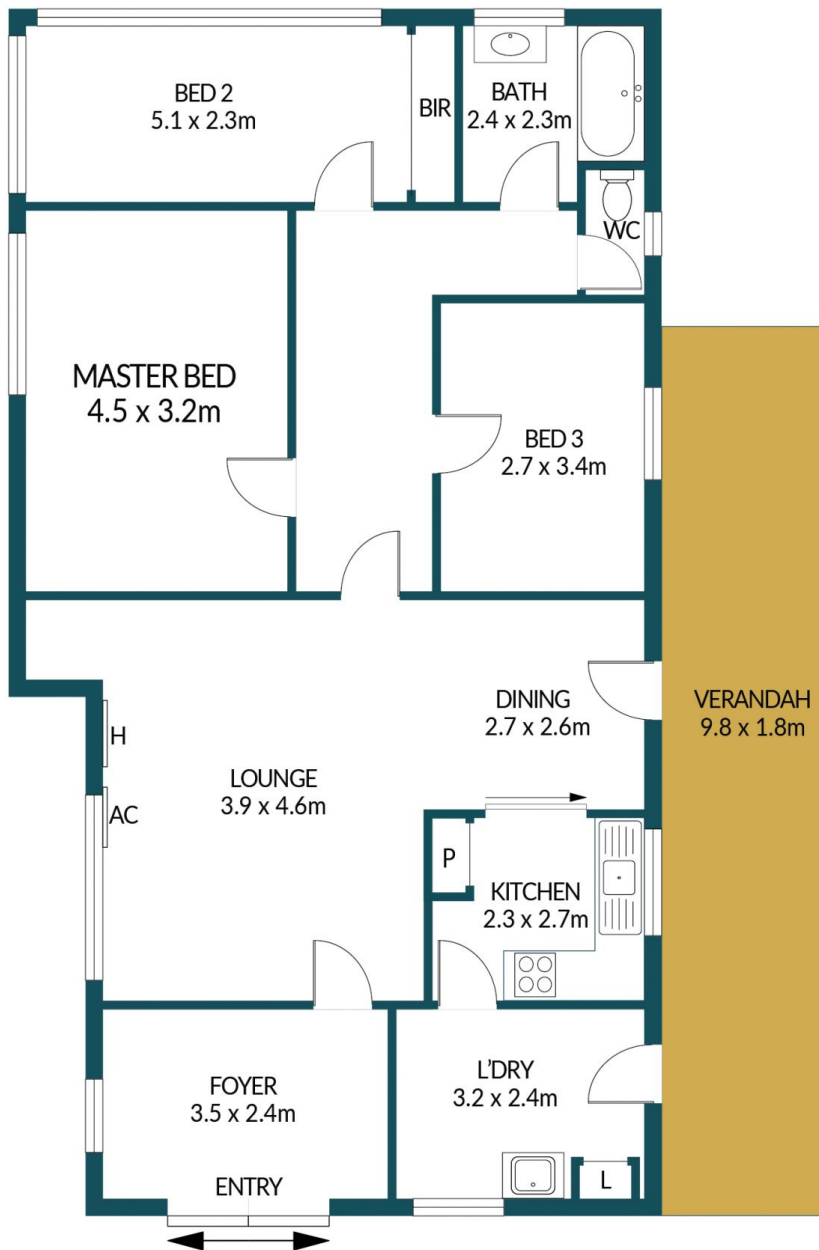
Price : \$ 505,000
Building Size : 106 sqm
Land Size : 960 sqm
View : <https://www.edgerealty.com.au/sale/sa/north-north-east-suburbs/elizabeth-south/residential/house/7920929>



Mike Lao
0410390250



Brendon Ly
0447888444



17 WHITFORD ROAD, ELIZABETH SOUTH

Disclaimer

Plans shown are for marketing purposes only. All dimensions are approximate and not to scale. They are subject to errors and inaccuracies and no liability will be accepted. Interested parties should make their own enquiries. Inclusions and exclusions must be confirmed in the Residential Contract.

APPROXIMATE DIMENSIONS

LIVING:	106.1m ²
VERANDAH:	176.4m ²
SHED:	22.6m ²
TOTAL:	305.1m ²