



16 Hinsley Road SMITHFIELD PLAINS SA

3 1 1

For an in-depth look at this home, please click on the 3D tour for a virtual walk-through or copy and paste this link into your browser

Virtual Tour Link: <https://shorturl.at/knOQR>

To submit an offer, please copy and paste this link into your browser:

<https://www.edgerealty.com.au/buying/make-an-offer/>

Mike Lao, Tyson Bennett and Edge Realty RLA256385 are proud to present to the market this humble family home set on a 650sqm block in the heart of Hinsley Road, Smithfield Plains. Buyers eager for a project can choose to update the existing residence and add their own personal touches or enjoy the space as is. The property is currently tenanted with a periodic lease of \$200 per week with the potential to increase with the current market.

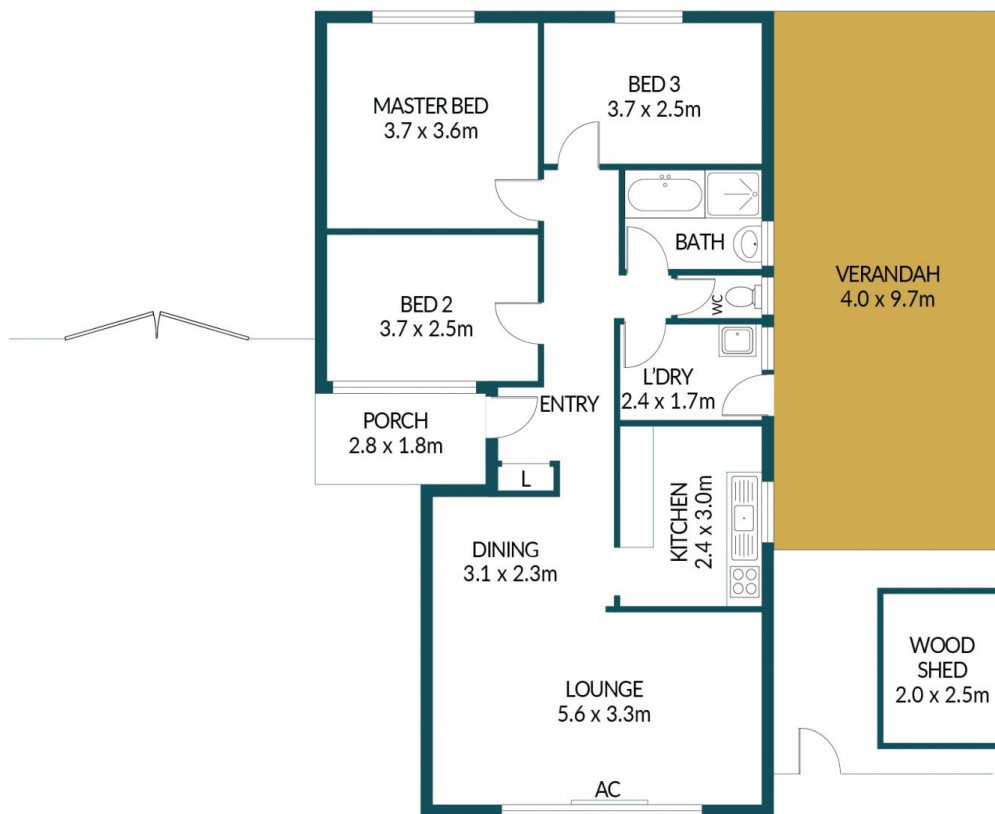
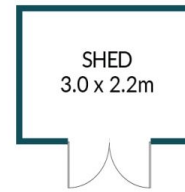
Price : \$ 400,000
Building Size : 90 sqm
Land Size : 650 sqm
View : <https://www.edgerealty.com.au/sale/sa/north-north-east-suburbs/smithfield-plains/residential/house/7923855>



Mike Lao
0410390250



Tyson Bennett
0437161997



16 HINSLEY ROAD, SMITHFIELD PLAINS

Disclaimer

Plans shown are for marketing purposes only. All dimensions are approximate and not to scale. They are subject to errors and inaccuracies and no liability will be accepted. Interested parties should make their own enquiries. Inclusions and exclusions must be confirmed in the Residential Contract.

APPROXIMATE DIMENSIONS

LIVING:	90.3m ²
VERANDAH:	38.8m ²
PORCH:	6.6m ²
WOOD SHED:	5.0m ²
TOTAL:	145.7m ²