



## 18 Penong Crescent SALISBURY NORTH SA

3 1 3

\*For an in-depth look at this home, please click on the 3D tour for a virtual walk-through or copy and paste this link into your browser\*

Virtual Tour Link: <https://shorturl.at/buBM1>

To submit an offer, please copy and paste this link into your browser:

<https://www.edgerealty.com.au/buying/make-an-offer/>

Mike Lao, Tyson Bennett and Edge Realty RLA256385 are proud to present to the market this delightful three bedroom family home, sure to impress whether you're an avid entertainer or simply love to spend quality time with the family. Nestled in a sought-after location, this inviting home offers the perfect setting for family living whether you're a growing family or investor looking to bolster your portfolio. The property is currently tenanted with a fixed lease of

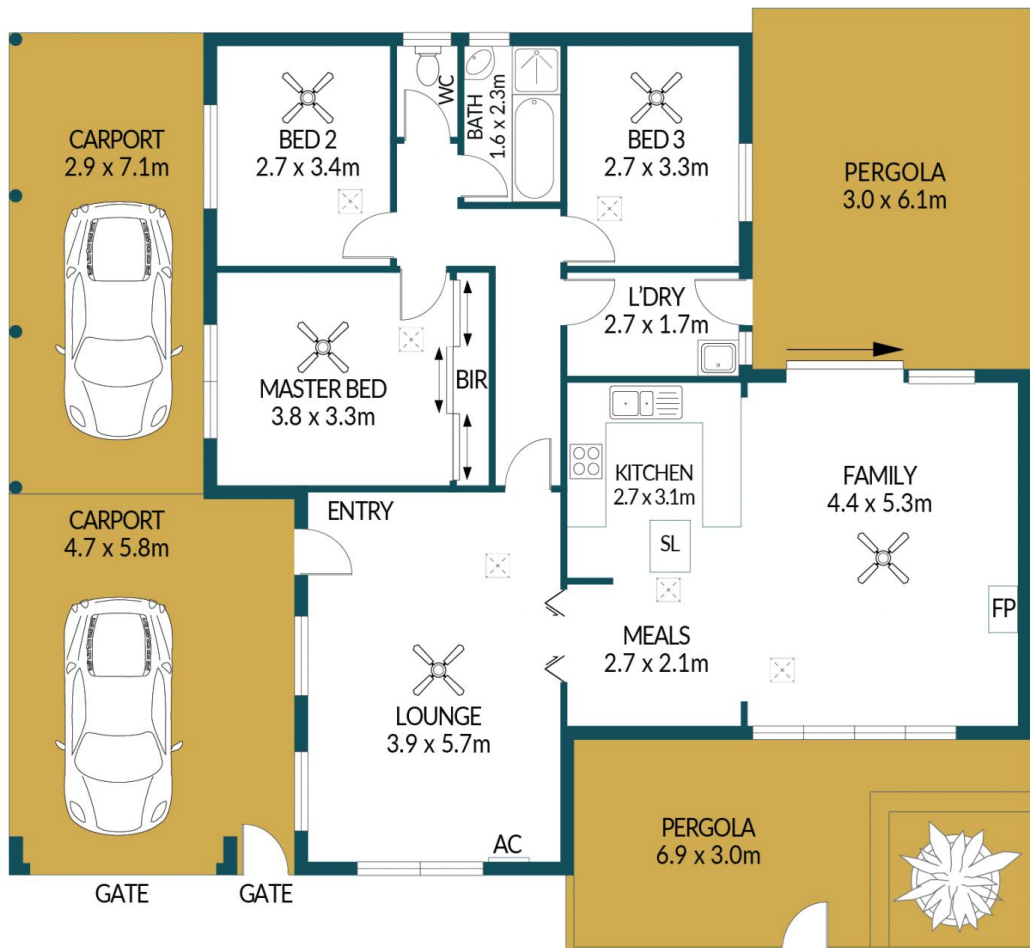
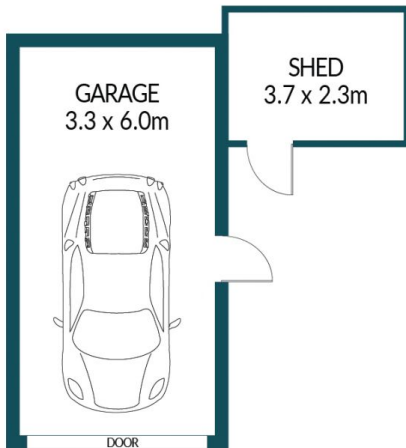
**Price** : \$ 520,000  
**Building Size** : 117 sqm  
**Land Size** : 579.5 sqm  
**View** : <https://www.edgerealty.com.au/sale/sa/north-north-east-suburbs/salisbury-north/residential/house/7929915>



**Mike Lao**  
0410390250



**Tyson Bennett**  
0437161997



## 18 PENONG CRESCENT, SALISBURY NORTH

### Disclaimer

Plans shown are for marketing purposes only. All dimensions are approximate and not to scale. They are subject to errors and inaccuracies and no liability will be accepted. Interested parties should make their own enquiries. Inclusions and exclusions must be confirmed in the Residential Contract.

### APPROXIMATE DIMENSIONS

LIVING:	123.4m <sup>2</sup>
GARAGE:	19.8m <sup>2</sup>
PATIO/SHED:	47.5m <sup>2</sup>
CARPORT:	47.9m <sup>2</sup>
TOTAL:	238.6m <sup>2</sup>