



17 Eucalyptus Crescent ANDREWS FARM SA

3 2 1

For an in-depth look at this home, please click on the 3D tour for a virtual walk-through or copy and paste this link into your browser

Virtual Tour Link:
<https://my.matterport.com/show/?m=gbnha59FGnt>

To submit an offer, please copy and paste this link into your browser:
<https://www.edgerealty.com.au/buying/make-an-offer/>

Mike Lao, Tyson Bennett and Edge Realty RLA256385 are proud to present to the market this easy-care and stylish home in Andrews Farm. Meticulously built in 2023 by SA Housing Centre - Hickinbotham, this three-bedroom, two-bathroom house is a haven for first home buyers, savvy investors, and growing families alike. Discover a spacious and flexible layout that's ready for you to move in

Price : \$ 585,999
Building Size : 122 sqm
Land Size : 300 sqm
View : <https://www.edgerealty.com.au/sale/sa/north-north-east-suburbs/andrews-farm/residential/house/7930265>



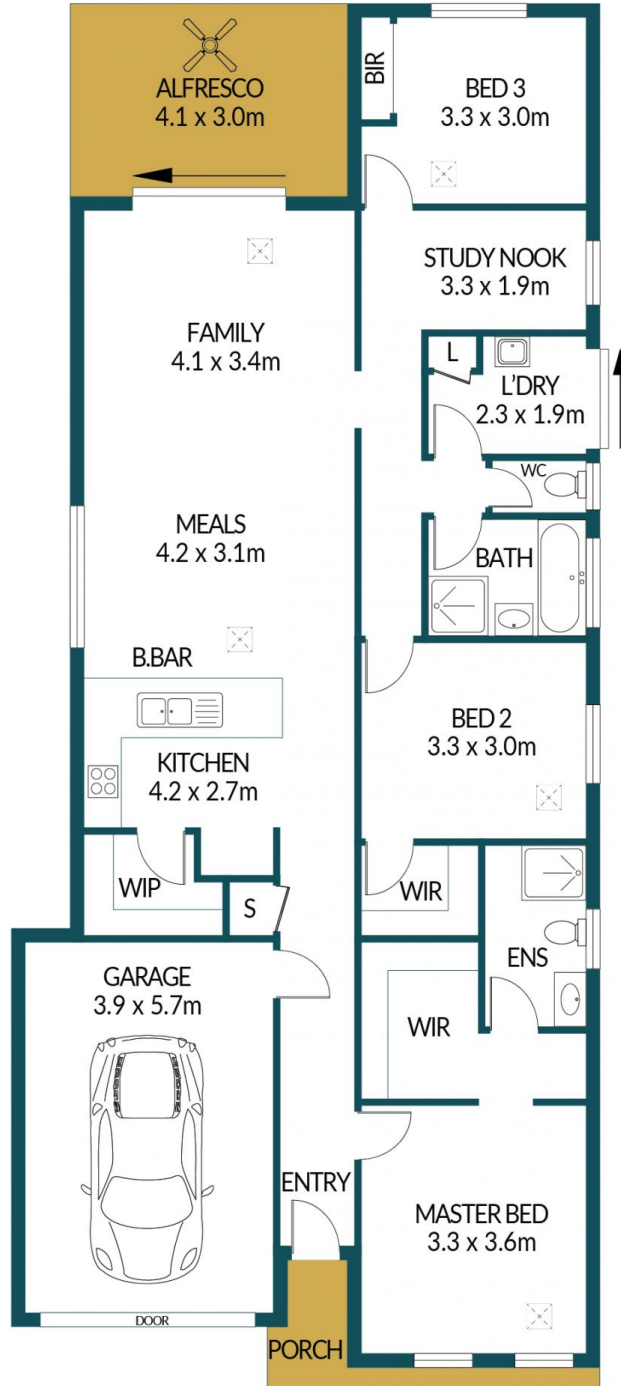
Mike Lao
0410390250



Tyson Bennett
0437161997



DECKING
3.6 x 2.1m



17 EUCALYPTUS CRESCENT, ANDREWS FARM

Disclaimer

Plans shown are for marketing purposes only. All dimensions are approximate and not to scale. They are subject to errors and inaccuracies and no liability will be accepted. Interested parties should make their own enquiries. Inclusions and exclusions must be confirmed in the Residential Contract.

APPROXIMATE DIMENSIONS

| | |
|----------------|---------------------|
| LIVING: | 122.7m ² |
| GARAGE: | 22.2m ² |
| PORCH/DECKING: | 9.8m ² |
| ALFRESCO: | 12.3m ² |
| TOTAL: | 167.0m ² |