



## 23 Brookside Close DAVOREN PARK SA

3 1 2

\*For an in-depth look at this home, please click on the 3D tour for a virtual walk-through or copy and paste this link into your browser\*

Virtual Tour Link:  
<https://my.matterport.com/show/?m=HwSKmsEXw5x>

To submit an offer, please copy and paste this link into your browser:  
<https://www.edgerealty.com.au/buying/make-an-offer/>

Mike Lao, Brendon Ly and Edge Realty RLA256385 are proud to present to the market this wonderful brick home standing proud on a 595sqm corner block with convenient dual driveways. Whether you're a first-time buyer, a seasoned house hunter or a savvy investor, you can't go past this inviting abode, ready for you to move in and enjoy or transform into something truly incredible with your loving

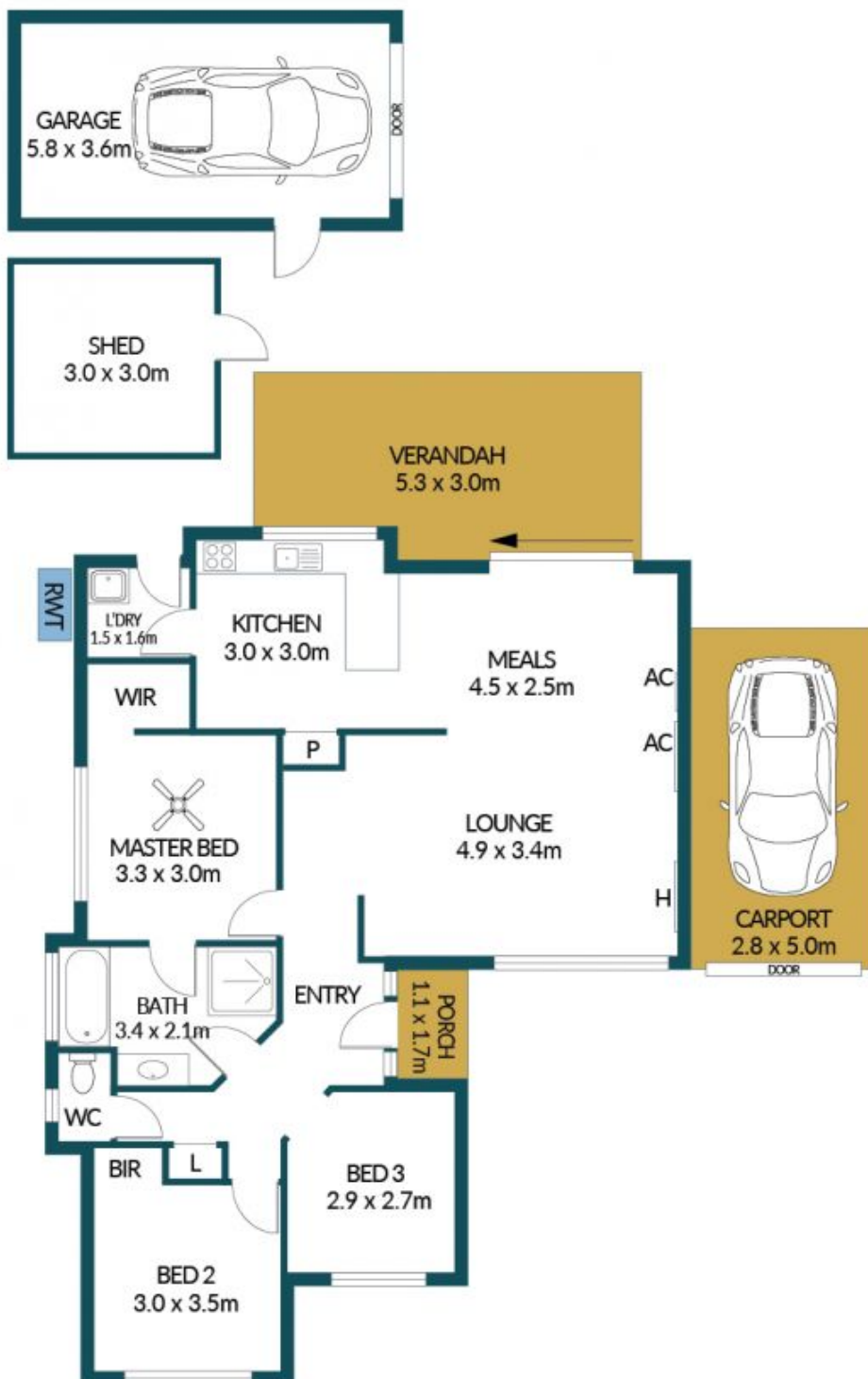
**Price** : \$ 460,000  
**Building Size** : 91 sqm  
**Land Size** : 595 sqm  
**View** : <https://www.edgerealty.com.au/sale/sa/north-north-east-suburbs/davoren-park/residential/house/7939075>



**Mike Lao**  
0410390250



**Brendon Ly**  
0447888444



## 23 BROOKSIDE CLOSE, DAVOREN PARK

### Disclaimer

Plans shown are for marketing purposes only. All dimensions are approximate and not to scale. They are subject to errors and inaccuracies and no liability will be accepted. Interested parties should make their own enquiries. Inclusions and exclusions must be confirmed in the Residential Contract.

### APPROXIMATE DIMENSIONS

LIVING:	91.3m <sup>2</sup>
CARPOR/GARAGE:	34.0m <sup>2</sup>
VERANDAH:	15.9m <sup>2</sup>
SHED/PORCH:	10.8m <sup>2</sup>
TOTAL:	152.0m <sup>2</sup>