



6 Michael Street SALISBURY EAST SA

3 2 5

For an in-depth look at this home, please click on the 3D tour for a virtual walk-through or copy and paste this link into your browser

Virtual <https://my.matterport.com/show/?m=P2NTD44enCF> Tour Link:

To submit an offer, please copy and paste this link into your browser:
<https://www.edgerealty.com.au/buying/make-an-offer/>

Mike Lao, Tyson Bennett and Edge Realty RLA256385 are proud to present to the market this solid brick home that's bursting with original details and ample living spaces that will delight the modern family. Move in and relax or update and add instant value, the choice is all yours when you call 6 Michael Street your own.

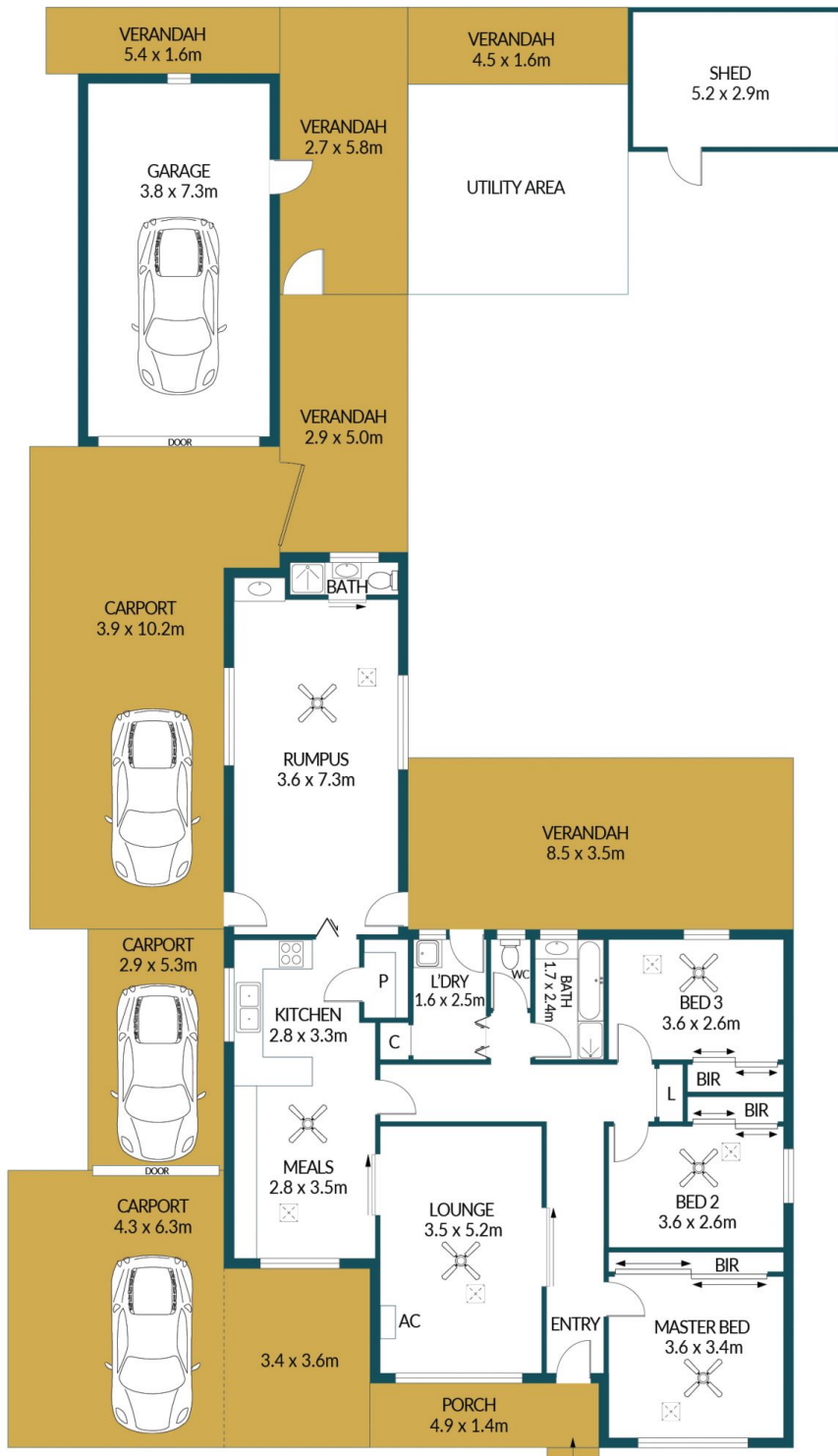
Price : \$ 650,000
Building Size : 331 sqm
Land Size : 696.4 sqm
View : <https://www.edgerealty.com.au/sale/sa/north-north-east-suburbs/salisbury-east/residential/house/7945985>



Mike Lao
0410390250



Tyson Bennett
0437161997



6 MICHAEL STREET, SALISBURY EAST

Disclaimer

Plans shown are for marketing purposes only. All dimensions are approximate and not to scale. They are subject to errors and inaccuracies and no liability will be accepted. Interested parties should make their own enquiries. Inclusions and exclusions must be confirmed in the Residential Contract.

APPROXIMATE DIMENSIONS

LIVING:	113.8m ²
PORCH:	6.9m ²
CARPORT:	82.3m ²
VERANDAH:	85.9m ²
GARAGE:	27.7m ²
SHED:	15.1m ²
TOTAL:	331.7m ²