



14 Dorothy Street BRAHMA LODGE SA

3 1 3

For an in-depth look at this home, please click on the 3D tour for a virtual walk-through or copy and paste this link into your browser

Virtual Tour Link: <https://shorturl.at/bDF18>

To submit an offer, please copy and paste this link into your browser:
<https://www.edgerealty.com.au/buying/make-an-offer/>

Mike Lao, Brendon Ly and Edge Realty RLA256385 are proud to present to the market this spacious family home with classic charm that is ready to be customised to create your ideal living space. Situated in the serene suburb of Brahma Lodge, 14 Dorothy Street beckons first home buyers, savvy investors, and growing families alike. Nestled on a generous 624sqm block with an impressive 19.5m frontage, this 3-bedroom, 1-bathroom brick home is

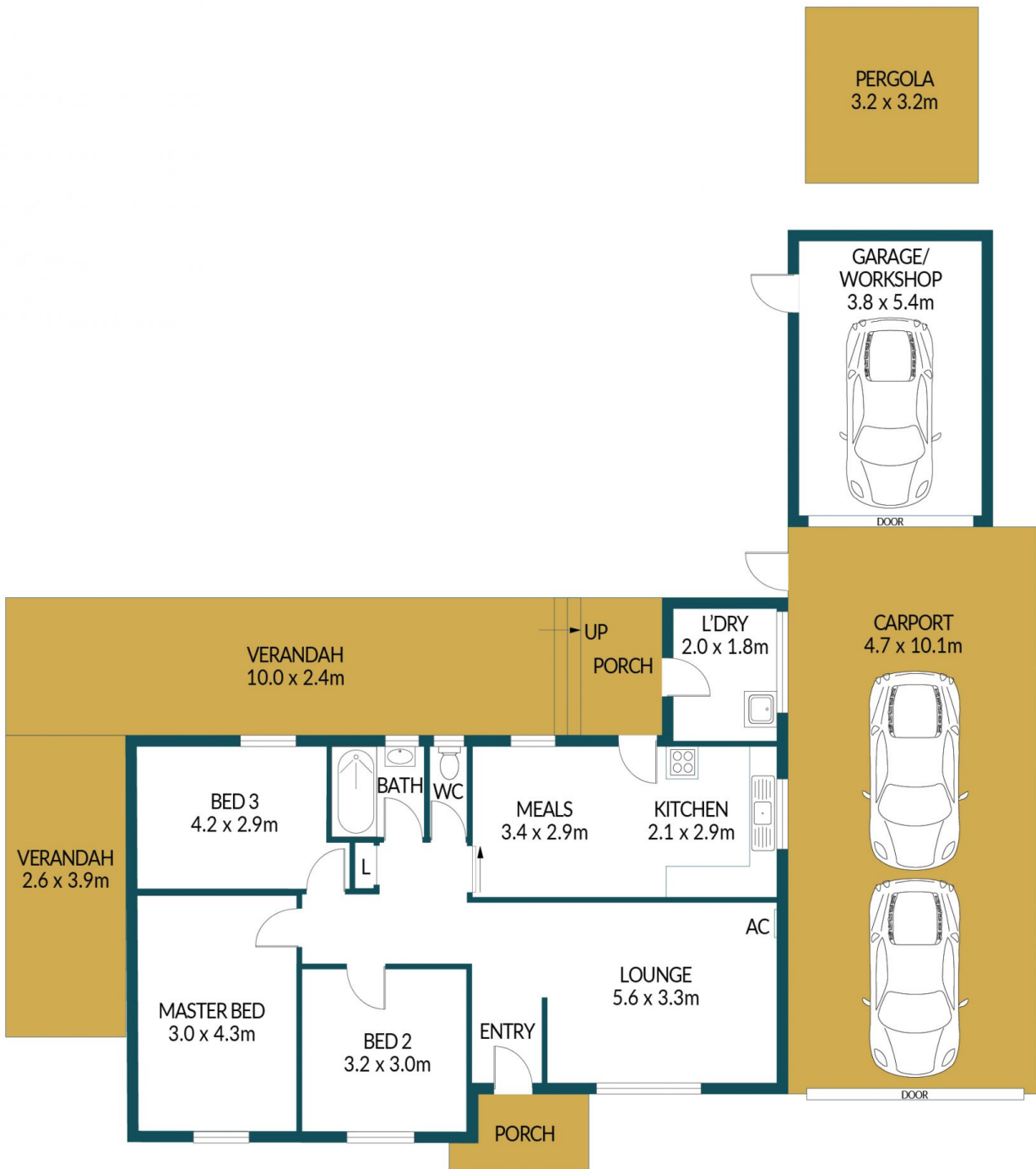
Price : \$ 560,000
Building Size : 94 sqm
Land Size : 624 sqm
View : <https://www.edgerealty.com.au/sale/sa/north-north-east-suburbs/brhma-lodge/residential/house/7952377>



Mike Lao
0410390250



Brendon Ly
0447888444



14 DOROTHY STREET, BRAHMA LODGE

Disclaimer

Plans shown are for marketing purposes only. All dimensions are approximate and not to scale. They are subject to errors and inaccuracies and no liability will be accepted. Interested parties should make their own enquiries. Inclusions and exclusions must be confirmed in the Residential Contract.

APPROXIMATE DIMENSIONS

LIVING:	94.9m ²
GARAGE/WORKSHOP:	20.5m ²
PORCH/PERGOLA:	13.4m ²
VERANDAH/CARPORT:	81.6m ²
TOTAL:	210.4m ²