



23 Kent Avenue BRAHMA LODGE SA

3 1 2

For an in-depth look at this home, please click on the 3D tour for a virtual walk-through or copy and paste this link into your browser

Virtual <https://my.matterport.com/show/?m=TFvrawwzjRS> Tour Link:

To submit an offer, please copy and paste this link into your browser:
<https://www.edgerealty.com.au/buying/make-an-offer/>

Mike Lao, Brendon Ly and Edge Realty RLA256385 are proud to present to the market a 1964 built home, perfectly positioned on a 593sqm corner block with dual access, offering a harmonious blend of comfort, style, and natural beauty. With three bedrooms, two toilets, an open plan living area and ducted air-conditioning and heating throughout, this home offers plenty of features to satisfy all

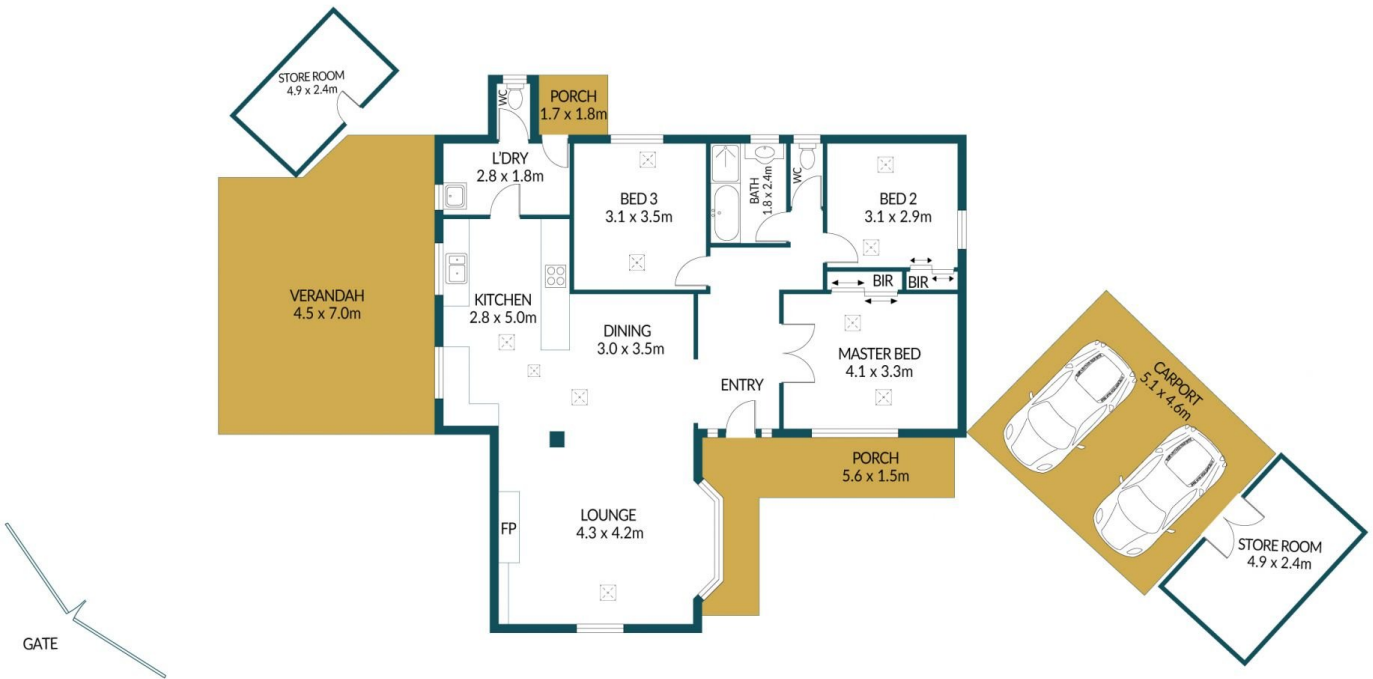
Price : \$ 652,000
Building Size : 115 sqm
Land Size : 593 sqm
View : <https://www.edgerealty.com.au/sale/sa/north-north-east-suburbs/brhma-lodge/residential/house/7960032>



Mike Lao
0410390250



Brendon Ly
0447888444



23 KENT AVENUE, BRAHMA LODGE

Disclaimer

Plans shown are for marketing purposes only. All dimensions are approximate and not to scale. They are subject to errors and inaccuracies and no liability will be accepted. Interested parties should make their own enquiries. Inclusions and exclusions must be confirmed in the Residential Contract.

APPROXIMATE DIMENSIONS

LIVING:	115.4m ²
CARPORT:	23.5m ²
PORCH/STORE:	35.1m ²
VERANDAH:	31.5m ²
TOTAL:	205.5m ²