



## 20 Lister Avenue SALISBURY HEIGHTS SA

5 2 5

\*For an in-depth look at this home, please click on the 3D tour for a virtual walk-through or copy and paste this link into your browser\*

Virtual Tour Link:  
<https://my.matterport.com/show/?m=e3kjidppRC>

To submit an offer, please copy and paste this link into your browser:  
<https://www.edgerealty.com.au/buying/make-an-offer/>

Mike Lao, Tyson Bennett and Edge Realty RLA256385 are proud to present to market your very own slice of paradise set on a sprawling 1,969sqm property nestled in Salisbury Heights with a glorious outlook to savour daily. Whether you have a passion for the outdoors or you're simply dreaming of a peaceful property with room to move and play, this stunning split-level 4 bedroom, 2 bathroom home

**Price** : \$849,000 - \$919,000  
**Building Size** : 200 sqm  
**Land Size** : 1969 sqm  
**View** : <https://www.edgerealty.com.au/sale/sa/north-north-east-suburbs/salisbury-heights/residential/house/7979856>



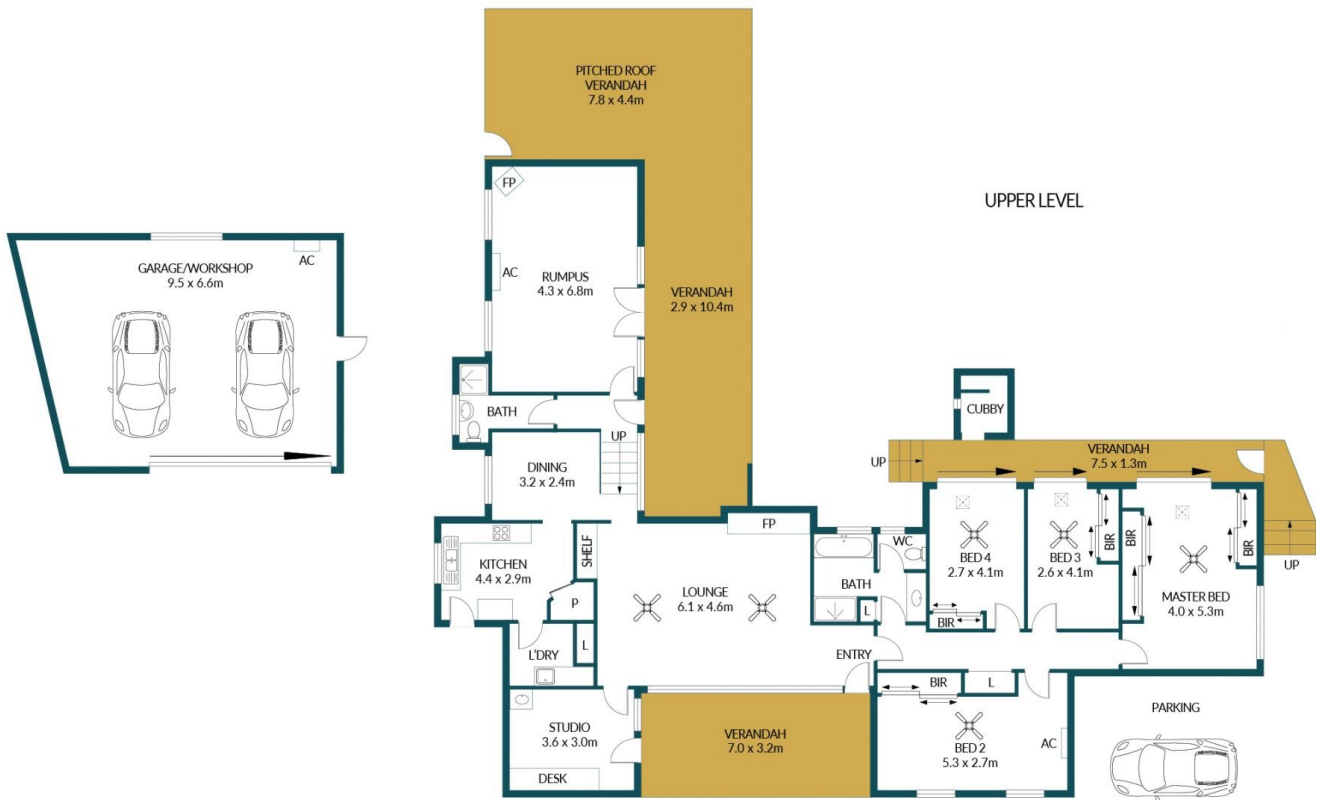
**Mike Lao**  
0410390250



**Tyson Bennett**  
0437161997



LOWER LEVEL



UPPER LEVEL

## 20 LISTER AVENUE, SALISBURY HEIGHTS

### Disclaimer

Plans shown are for marketing purposes only. All dimensions are approximate and not to scale. They are subject to errors and inaccuracies and no liability will be accepted. Interested parties should make their own enquiries. Inclusions and exclusions must be confirmed in the Residential Contract.

### APPROXIMATE DIMENSIONS

LIVING:	200.6m <sup>2</sup>
GARAGE/WORKSHOP:	31.9m <sup>2</sup>
VERANDAH/CUBBY:	110.3m <sup>2</sup>
WOOD SHED/AVIARY:	67.7m <sup>2</sup>
CHICKEN COUP:	12.0m <sup>2</sup>
TOTAL:	422.5m <sup>2</sup>