

## 28 Barrington Road ELIZABETH DOWNS SA

3 1 2

\*For an in-depth look at this home, please click on the 3D tour for a virtual walk-through or copy and paste this link into your browser\*

Virtual <https://my.matterport.com/show/?m=rLY8kYHRgtn> Tour Link:

To submit an offer, please copy and paste this link into your browser:  
<https://www.edgerealty.com.au/buying/make-an-offer/>

Mike Lao, Tyson Bennett and Edge Realty RLA256385 are proud to present to the market this updated brick home set on a 704sqm approx block, offering a blend of modern comfort and convenience. Situated within the thriving Northern suburbs, this property boasts a range of features that make it ideal for families, first home buyers, and investors alike.

**Price** : \$489,000 - \$535,000  
**Building Size** : 93 sqm  
**Land Size** : 704.8 sqm  
**View** : <https://www.edgerealty.com.au/sale/sa/north-north-east-suburbs/elizabeth-downs/residential/house/7980764>



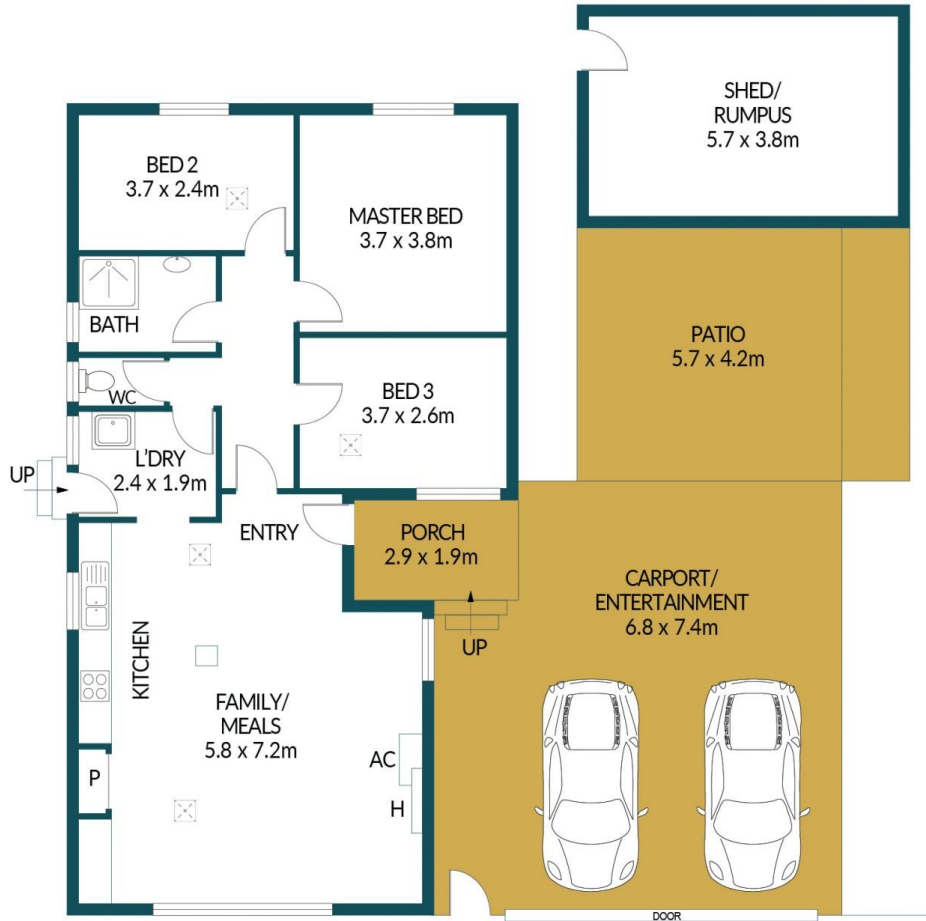
**Mike Lao**  
0410390250



**Tyson Bennett**  
0437161997



SHED  
2.4 x 1.6m



GATE

## 28 BARRINGTON ROAD, ELIZABETH DOWNS

### Disclaimer

Plans shown are for marketing purposes only. All dimensions are approximate and not to scale. They are subject to errors and inaccuracies and no liability will be accepted. Interested parties should make their own enquiries. Inclusions and exclusions must be confirmed in the Residential Contract.

### APPROXIMATE DIMENSIONS

LIVING:	93.0m <sup>2</sup>
SHED/RUMPUS:	25.5m <sup>2</sup>
PORCH/CARPORT:	56.5m <sup>2</sup>
SHADE/PATIO:	39.9m <sup>2</sup>
TOTAL:	214.9m <sup>2</sup>