



63 Lakeside Drive ANDREWS FARM SA

4 2 2

For an in-depth look at this home, please click on the 3D tour for a virtual walk-through or copy and paste this link into your browser

Virtual <https://my.matterport.com/show/?m=uHn6kre2pda> Tour Link:

To submit an offer, please copy and paste this link into your browser:
<https://www.edgerealty.com.au/buying/make-an-offer/>

Mike Lao, Tyson Bennett and Edge Realty RLA256385 are proud to present to the market this light-filled, spacious and wonderful Andrews Farm home that embodies comfortable modern family living. Featuring multiple living spaces and a variety of features to enhance family life, families love this gorgeous four-bedroom, two-bathroom home.

Price : Under Contract!
Building Size : 156 sqm
Land Size : 448 sqm
View : <https://www.edgerealty.com.au/sale/sa/north-north-east-suburbs/andrews-farm/residential/house/7992720>



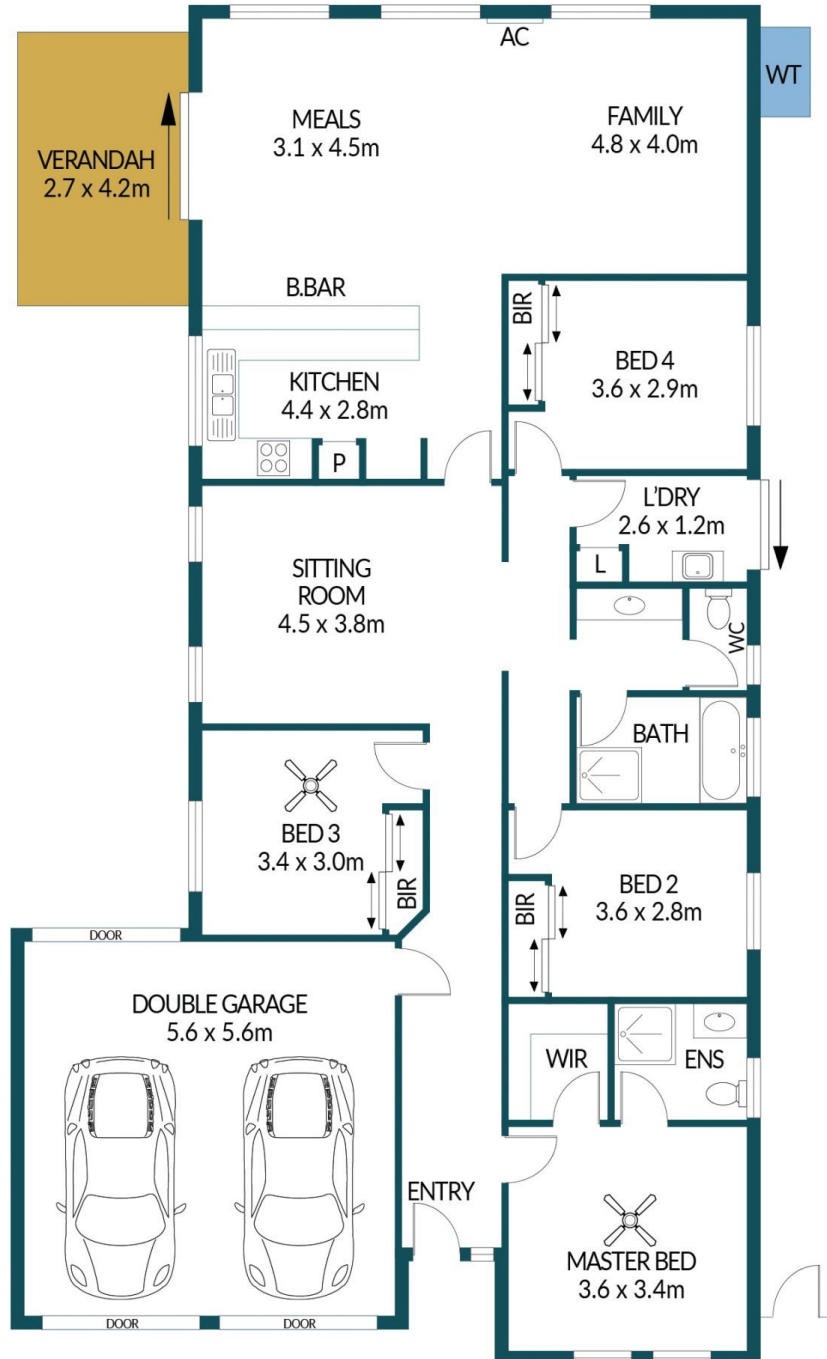
Mike Lao
0410390250



Tyson Bennett
0437161997



SHED
2.3 x 2.3m



63 LAKESIDE DRIVE, ANDREWS FARM

Disclaimer

Plans shown are for marketing purposes only. All dimensions are approximate and not to scale. They are subject to errors and inaccuracies and no liability will be accepted. Interested parties should make their own enquiries. Inclusions and exclusions must be confirmed in the Residential Contract.

APPROXIMATE DIMENSIONS

LIVING:	156.0m ²
DOUBLE GARAGE:	31.4m ²
VERANDAH:	11.3m ²
SHED:	5.3m ²
TOTAL:	204.0m ²