



45 Nimitz Road ELIZABETH EAST SA

3 1 1

For an in-depth look at this home, please click on the 3D tour for a virtual walk-through or copy and paste this link into your browser

Virtual Tour Link:
<https://my.matterport.com/show/?m=HGK8KSydPe6>

To submit an offer, please copy and paste this link into your browser:

<https://www.edgerealty.com.au/buying/make-an-offer/>

Tyson Bennett, Mike Lao and Edge Realty RLA256385 are proud to present to the market this charming solid brick home, nestled on an impressive 1,240sqm block with no easements. Whether you're seeking a canvas for renovation or a simply move-in-and enjoy, this property offers an exceptional opportunity for families, first home buyers, investors, and developers alike.

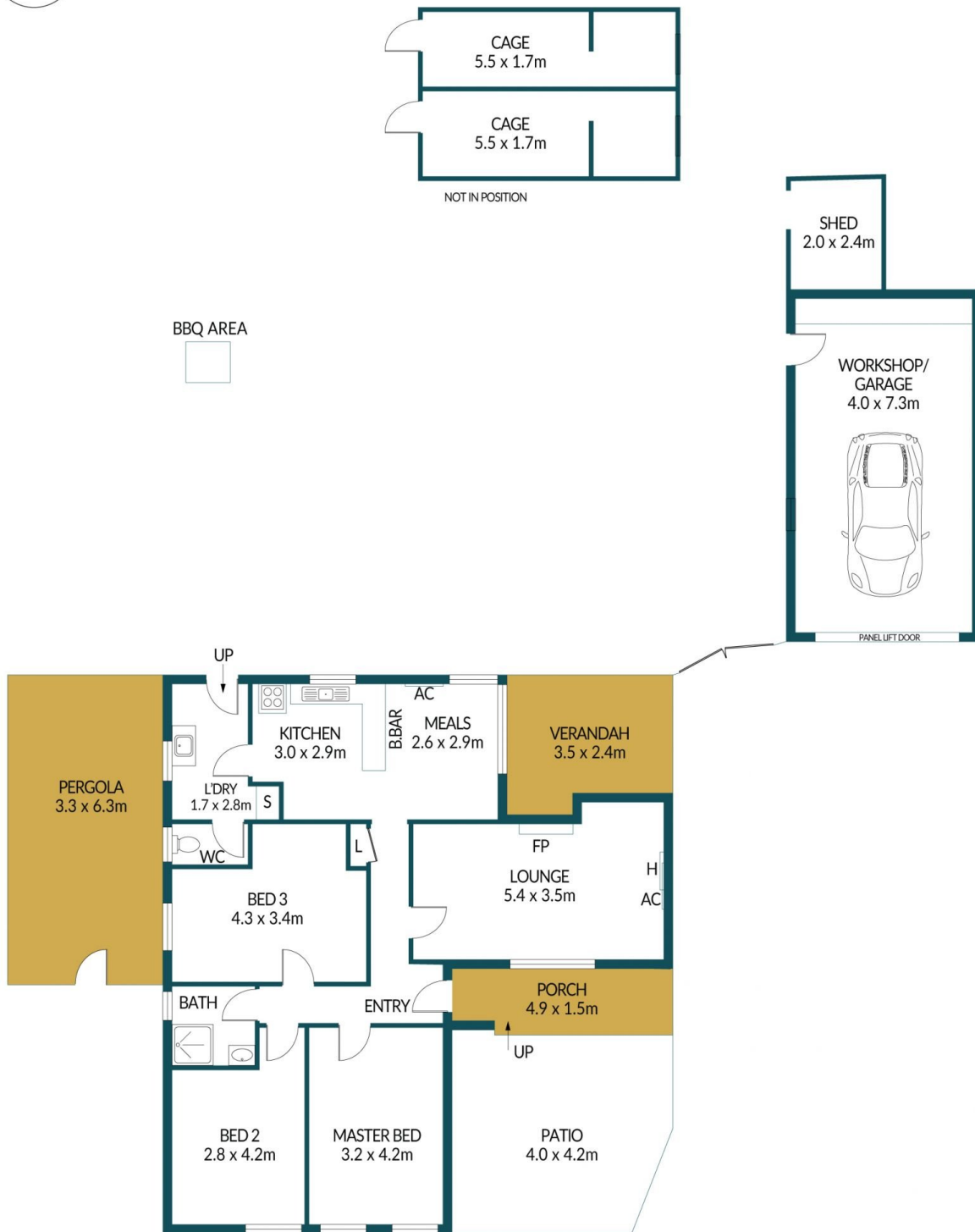
Price : \$479,000 - \$519,000
Building Size : 100 sqm
Land Size : 1240 sqm
View : <https://www.edgerealty.com.au/sale/sa/north-north-east-suburbs/elizabeth-east/residential/house/7999322>



Tyson Bennett
0437161997



Mike Lao
0410390250



45 NIMITZ ROAD, ELIZABETH EAST

Disclaimer

Plans shown are for marketing purposes only. All dimensions are approximate and not to scale. They are subject to errors and inaccuracies and no liability will be accepted. Interested parties should make their own enquiries. Inclusions and exclusions must be confirmed in the Residential Contract.

APPROXIMATE DIMENSIONS

LIVING:	100.9m ²
GARAGE/WORKSHOP:	29.2m ²
PERGOLA/PORCH/SHED:	33.0m ²
VERANDAH/PATIO:	25.2m ²
TOTAL:	188.3m ²