



**2/7 Passmore Place SALISBURY NORTH SA**

2 1 1

\*For an in-depth look at this home, please click on the 3D tour for a virtual walk-through or copy and paste this link into your browser\*

Virtual <https://my.matterport.com/show/?m=Zg3C2szB17M> Tour Link:

To submit an offer, please copy and paste this link into your browser:  
<https://www.edgerealty.com.au/buying/make-an-offer/>

Mike Lao, Brendon Ly and Edge Realty RLA256385 are proud to present to the market this wonderful two-bedroom unit that offers laidback living in the peaceful suburb of Salisbury North. Whether you are searching for your next investment property, first home, or downsizer, this property is sure to cater for your needs.

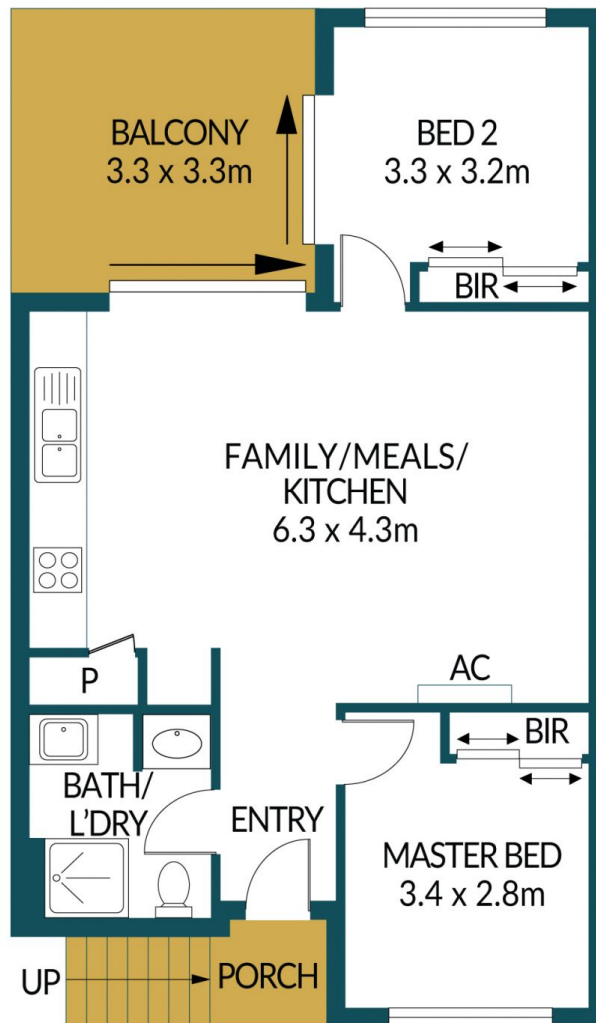
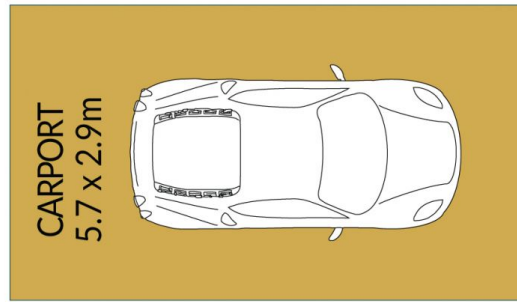
**Price** : \$ 380,000  
**Building Size** : 56 sqm  
**View** : <https://www.edgerealty.com.au/sale/sa/north-north-east-suburbs/salisbury-north/residential/house/8040680>



**Mike Lao**  
0410390250



**Brendon Ly**  
0447888444



## 2/7 PASSMORE PLACE, SALISBURY NORTH

### Disclaimer

Plans shown are for marketing purposes only. All dimensions are approximate and not to scale. They are subject to errors and inaccuracies and no liability will be accepted. Interested parties should make their own enquiries. Inclusions and exclusions must be confirmed in the Residential Contract.

### APPROXIMATE DIMENSIONS

LIVING:	56.3m <sup>2</sup>
BALCONY:	10.9m <sup>2</sup>
PORCH:	1.4m <sup>2</sup>
TOTAL:	68.6m <sup>2</sup>