



## 52 Barrat Street SMITHFIELD PLAINS SA

3 2 1

\*For an in-depth look at this home, please click on the 3D tour for a virtual walk-through or copy and paste this link into your browser\*

Virtual <https://my.matterport.com/show/?m=4rdzFgMre8n> Tour Link:

To submit an offer, please copy and paste this link into your browser:  
<https://www.edgerealty.com.au/buying/make-an-offer/>

Mike Lao, Tyson Bennett and Edge Realty RLA256385 are proud to present to the market this modern gem sure to delight families and investors alike! Nestled on a picturesque, tree-lined street, this stunning contemporary home offers a blend of comfort, style, and convenience in

[For full version visit the website](https://www.edgerealty.com.au)

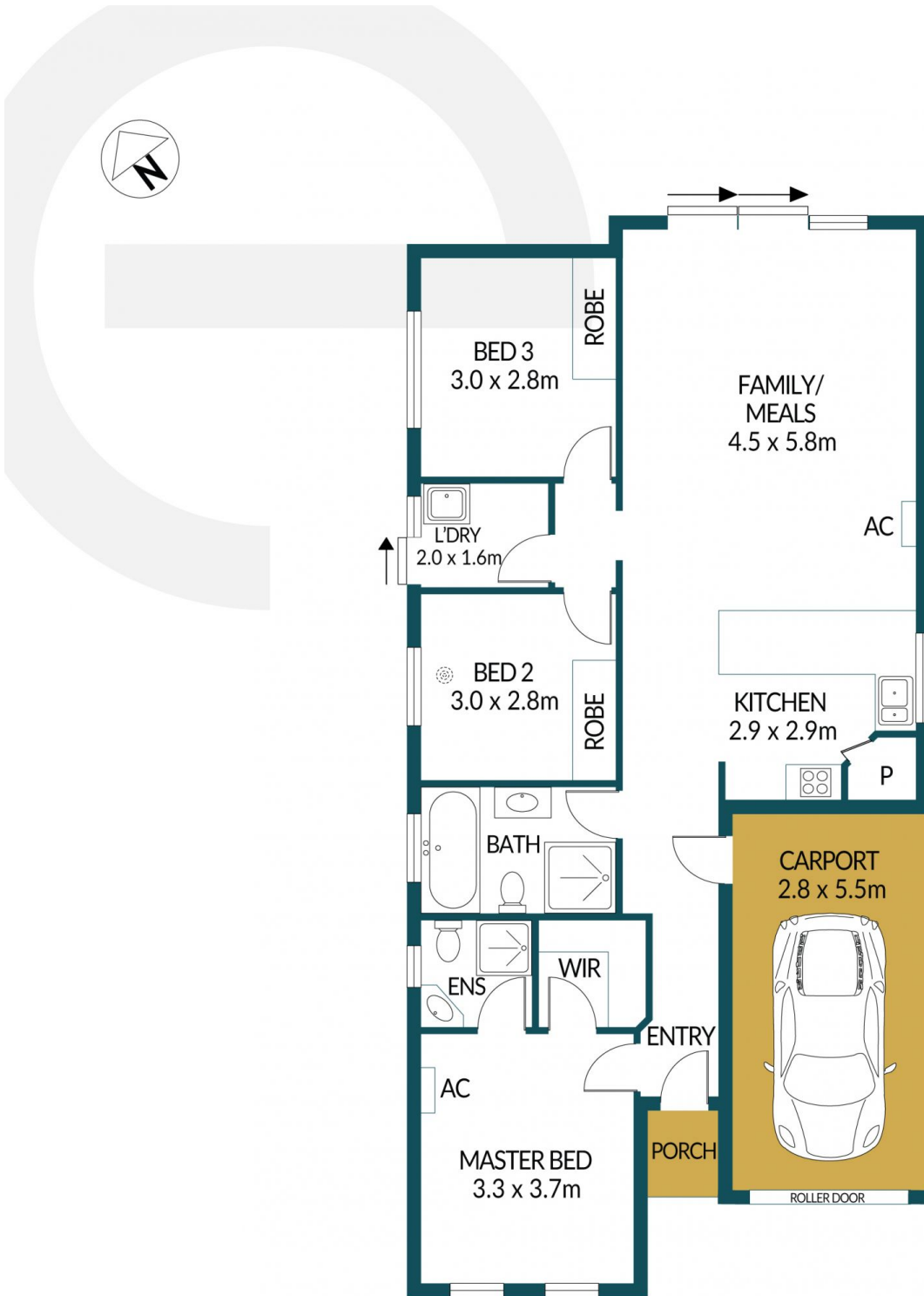
**Type** : House  
**Price** : \$ 540,000  
**Building Size** : 95 sqm  
**Land Size** : 243 sqm  
**View** : <https://www.edgerealty.com.au/sale/sa/north-north-east-suburbs/smithfield-plains/residential/house/8280065>



**Mike Lao**  
 0410200250



**Tyson Bennett**  
 0427461007



## 52 BARRAT STREET, SMITHFIELD PLAINS



### Disclaimer

Plans shown are for marketing purposes only. All dimensions and placements are approximate and not to scale. They are subject to errors and inaccuracies and Edge Realty will not accept any liability. Interested parties should make their own enquiries. Inclusions and exclusions must be confirmed in the Edge Realty Residential Contract.

EDGEREALTY.COM.AU

### APPROXIMATE DIMENSIONS

LIVING:	95.6m <sup>2</sup>
CARPORT:	15.4m <sup>2</sup>
PORCH:	1.7m <sup>2</sup>
TOTAL:	112.7m <sup>2</sup>