



## 35 Lovelock Road PARAFIELD GARDENS SA

3 1 1

\*For an in-depth look at this home, please click on the 3D tour for a virtual walk-through or copy and paste this link into your browser\*

Virtual Tour Link: <https://shorturl.at/zqLvX>

To submit an offer, please copy and paste this link into your browser:

<https://www.edgerealty.com.au/buying/make-an-offer/>

Mike Lao, Brendon Ly and Edge Realty RLA256385 are proud to present to the market this beautifully maintained three-bedroom family home on a 540sqm block that combines comfort, practicality and lifestyle appeal in a quiet, family-friendly location. Perfectly suited to investors, growing families or those who love to entertain, this

[For full version visit the website](#)

**Type** : House  
**Price** : \$749,000 - \$823,000  
**Building Size** : 148 sqm  
**Land Size** : 540 sqm  
**View** : <https://www.edgerealty.com.au/sale/sa/north-north-east-suburbs/parafield-garden-s/residential/house/8548657>



**Mike Lao**  
0410 299 259

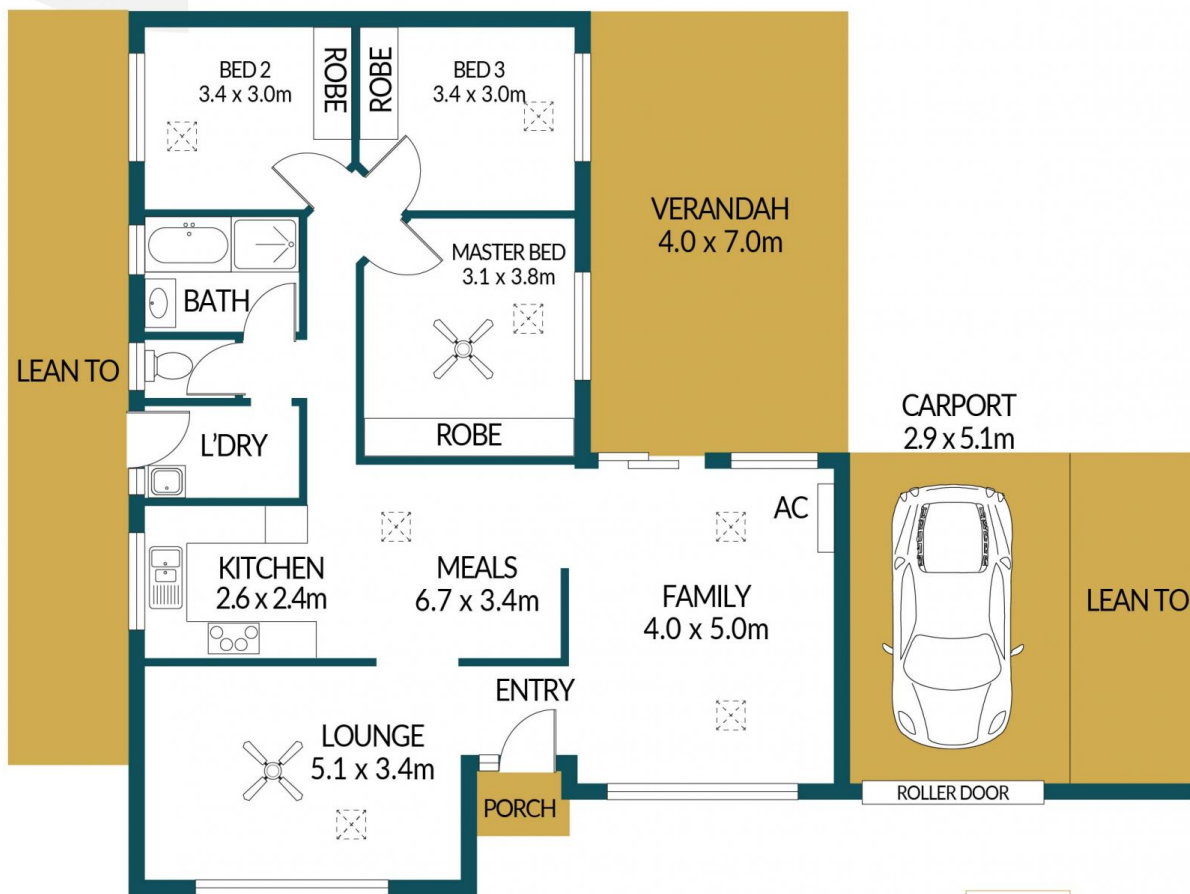


**Brendon Ly**  
0417 888 111



SHED  
4.8 x 3.0m

INGROUND POOL  
6.0 x 3.0m



## 35 LOVELOCK ROAD, PARAFIELD GARDENS



### Disclaimer

Plans shown are for marketing purposes only. All dimensions and placements are approximate and not to scale. They are subject to errors and inaccuracies and Edge Realty will not accept any liability. Interested parties should make their own enquiries. Inclusions and exclusions must be confirmed in the Edge Realty Residential Contract.

EDGEREALTY.COM.AU

### APPROXIMATE DIMENSIONS

LIVING:	104.0m <sup>2</sup>
CARPORT:	14.8m <sup>2</sup>
PORCH/VERANDAH:	30.0m <sup>2</sup>
SHED:	14.4m <sup>2</sup>
TOTAL:	163.2m <sup>2</sup>