

## 3 Gove Road ENFIELD SA

3 1 1

\*For an in-depth look at this home, please click on the 3D tour for a virtual walk-through or copy and paste this link into your browser\*

Virtual <https://my.matterport.com/show/?m=VY4GVbufBVk> Tour Link:

Auction Saturday the 13th of December, onsite at 1pm (Unless Sold Prior)

To submit an offer, please copy and paste this link into your browser:  
<https://www.edgerealty.com.au/buying/make-an-offer/>

Tyson Bennett, Brendon Ly and Edge Realty RLA256385 are proud to present to the market this wonderfully

[For full version visit the website](https://www.edgerealty.com.au)

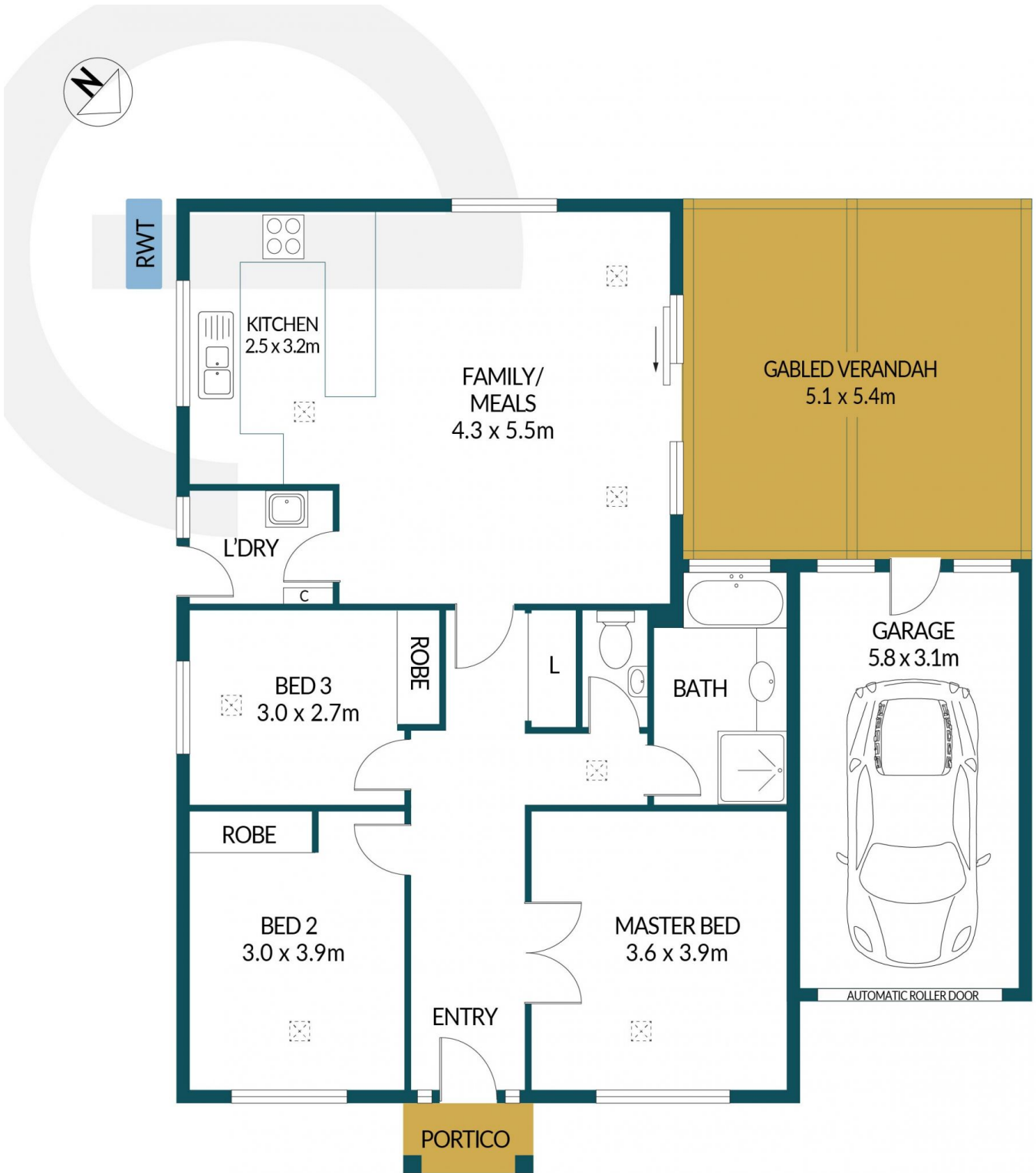
**Type** : House  
**Price** : \$ 807,000  
**Building Size** : 140 sqm  
**Land Size** : 300 sqm  
**View** : <https://www.edgerealty.com.au/sale/sa/north-north-east-suburbs/enfield/residential/house/8561925>



**Tyson Bennett**  
 0127 161 887



**Brendon Ly**  
 0117 888 111



## 3 GOVE ROAD, ENFIELD



### Disclaimer

Plans shown are for marketing purposes only. All dimensions and placements are approximate and not to scale. They are subject to errors and inaccuracies and Edge Realty will not accept any liability. Interested parties should make their own enquiries. Inclusions and exclusions must be confirmed in the Edge Realty Residential Contract.

### APPROXIMATE DIMENSIONS

LIVING:	93.0m <sup>2</sup>
GARAGE:	17.9m <sup>2</sup>
PORTICO/VERANDAH:	30.0m <sup>2</sup>
TOTAL:	140.9m <sup>2</sup>