



39A Meath Avenue SALISBURY DOWNS SA

3 2 1

For an in-depth look at this home, please click on the 3D tour for a virtual walk-through or copy and paste this link into your browser

Virtual <https://my.matterport.com/show/?m=ayi3a17qkqe> Tour Link:

To submit an offer, please copy and paste this link into your browser:
<https://www.edgerealty.com.au/buying/make-an-offer/>

Mike Lao, Brendon Ly and Edge Realty RLA256385 are proud to present to the market this three bedroom family home, meticulously crafted for harmonious and vibrant living. Conveniently situated in the highly sought-after neighbourhood of Salisbury Downs, this home is sure to

[For full version visit the website](https://www.edgerealty.com.au)

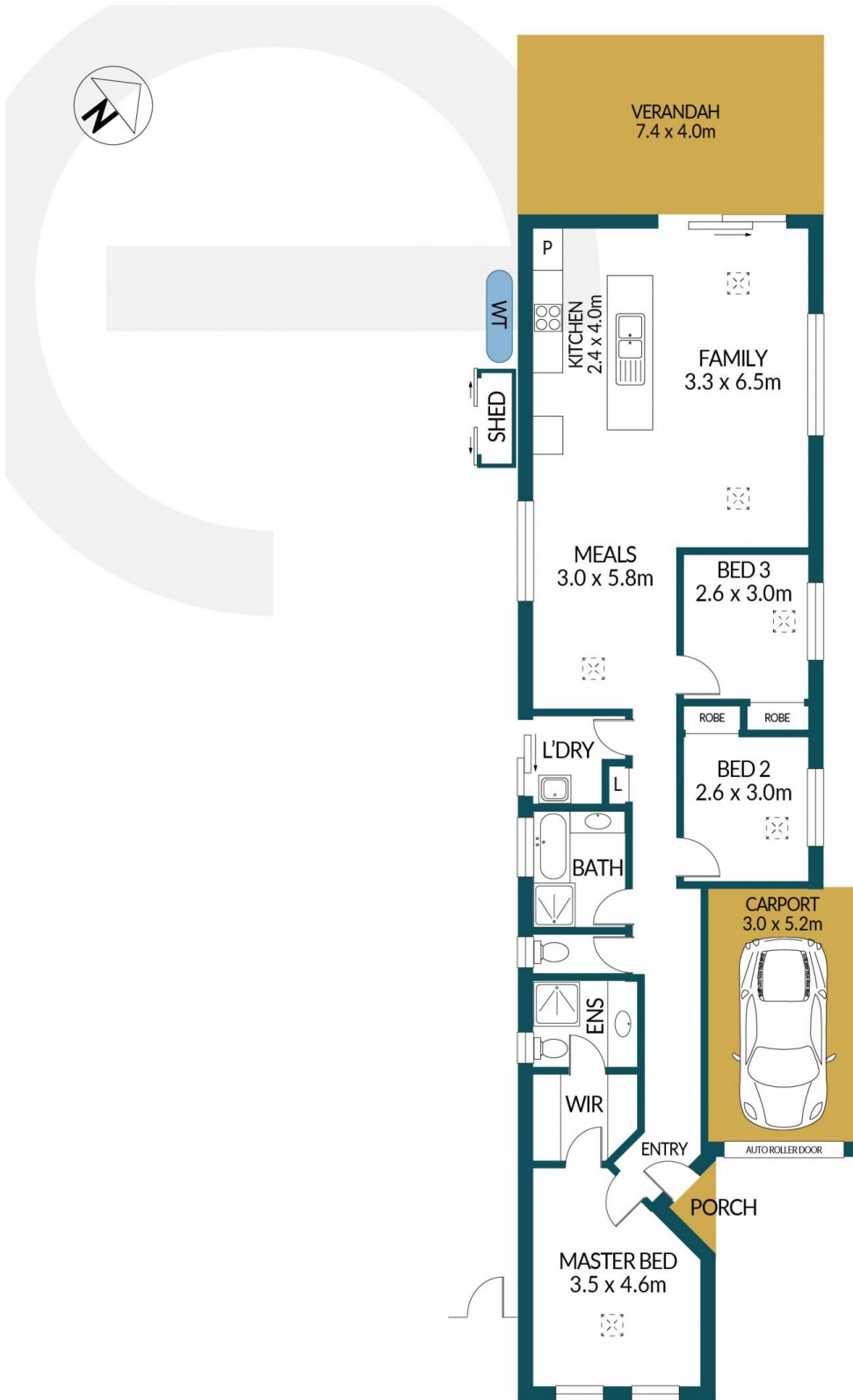
Type : House
Price : \$769,000 - \$829,000
Building Size : 168 sqm
Land Size : 362 sqm
View : <https://www.edgerealty.com.au/sale/sa/north-north-east-suburbs/salisbury-downs/residential/house/8650588>



Mike Lao
 0410 200 250



Brendon Ly
 0417 888 111



39A MEATH AVENUE, SALISBURY DOWNS



Disclaimer

Plans shown are for marketing purposes only. All dimensions and placements are approximate and not to scale. They are subject to errors and inaccuracies and Edge Realty will not accept any liability. Interested parties should make their own enquiries. Inclusions and exclusions must be confirmed in the Edge Realty Residential Contract.

EDGEREALTY.COM.AU

APPROXIMATE DIMENSIONS

LIVING:	122.0m ²
CARPORT:	15.6m ²
SHED:	2.0m ²
PORCH/VERANDAH:	30.6m ²
TOTAL:	170.2m ²