



23 Beaminster Road ELIZABETH PARK SA

3 1 2

For an in-depth look at this home, please click on the 3D tour for a virtual walk-through or copy and paste this link into your browser

Virtual <https://my.matterport.com/show/?m=tfYQ894om61> Tour Link:

To submit an offer, please copy and paste this link into your browser:
<https://www.edgerealty.com.au/buying/make-an-offer/>

Mike Lao, Tyson Bennett and Edge Realty RLA256385 are proud to present to the market a well maintained home set on a generous 670sqm (approx) allotment, offering comfort, space and flexibility for first home buyers, investors and small families alike. Freshly painted and finished with

[For full version visit the website](https://www.edgerealty.com.au)

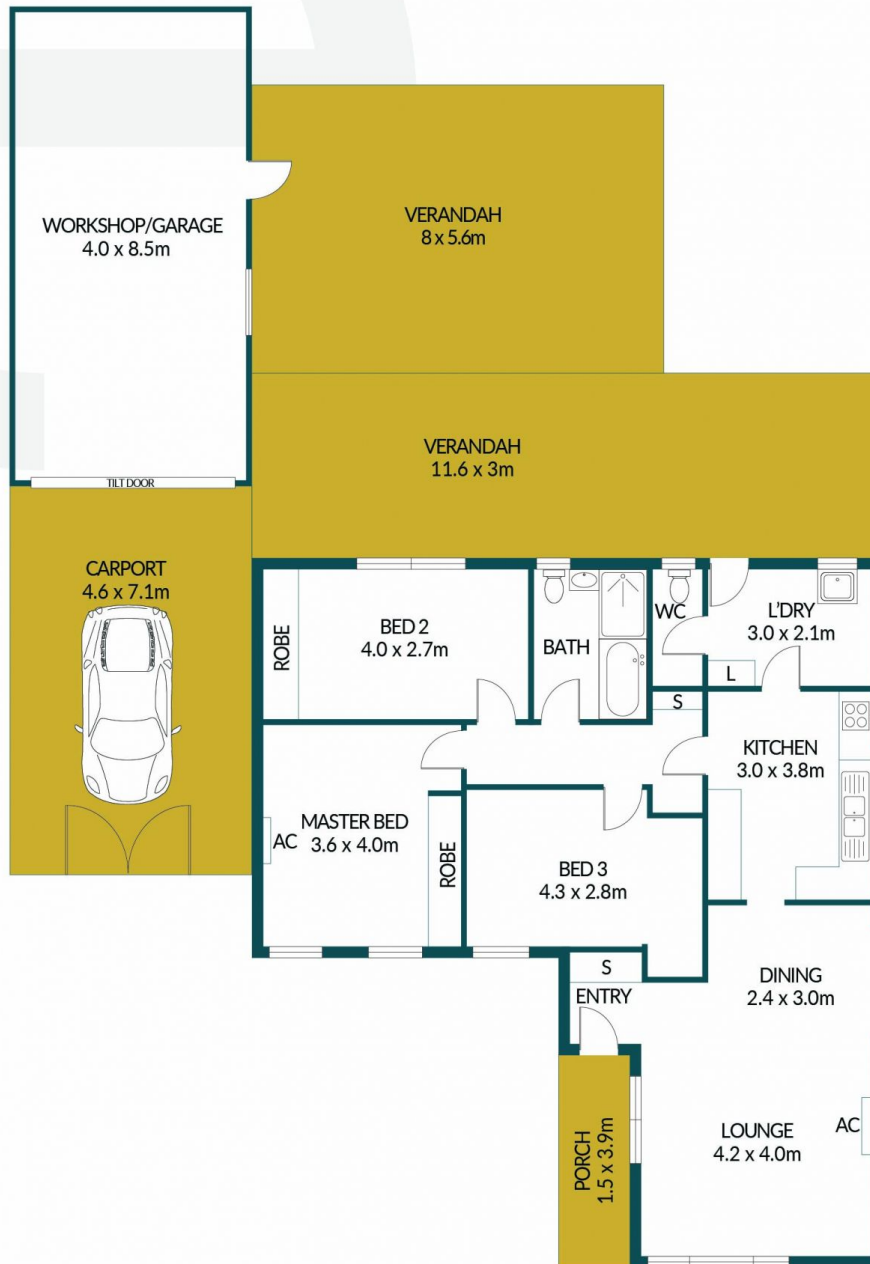
Type : House
Price : \$ 660,000
Building Size : 220 sqm
Land Size : 670 sqm
View : <https://www.edgerealty.com.au/sale/sa/north-north-east-suburbs/elizabeth-park/residential/house/8673230>



Mike Lao
 0410 200 250



Tyson Bennett
 0437 161 007



23 BEAMINSTER ROAD, ELIZABETH PARK



Disclaimer

Plans shown are for marketing purposes only. All dimensions and placements are approximate and not to scale. They are subject to errors and inaccuracies and Edge Realty will not accept any liability. Interested parties should make their own enquiries. Inclusions and exclusions must be confirmed in the Edge Realty Residential Contract.

EDGEREALTY.COM.AU

APPROXIMATE DIMENSIONS

LIVING:	102.0m ²
CARPORT:	32.6m ²
WORKSHOP/SHED:	34.0m ²
PORCH/VERANDAH:	85.5m ²
TOTAL:	254.1m ²