



34 Bristol Crescent DAVOREN PARK SA

2 1 1

For an in-depth look at this home, please click on the 3D tour for a virtual walk-through or copy and paste this link into your browser

Virtual Tour Link: <https://shorturl.at/Z5fZt>

To submit an offer, please copy and paste this link into your browser:

<https://www.edgerealty.com.au/buying/make-an-offer/>

Mike Lao, Brendon Ly and Edge Realty RLA256385 are proud to present to the market a well presented and thoughtfully designed home that delivers comfort, efficiency and low maintenance living on a 257sqm (approx) allotment. Whether you are entering the market, downsizing into something more manageable or securing a

[For full version visit the website](#)

Type : House
Price : \$579,000 - \$629,000
Building Size : 71 sqm
Land Size : 257 sqm
View : <https://www.edgerealty.com.au/sale/sa/north-north-east-suburbs/davoren-park/residential/house/8685331>



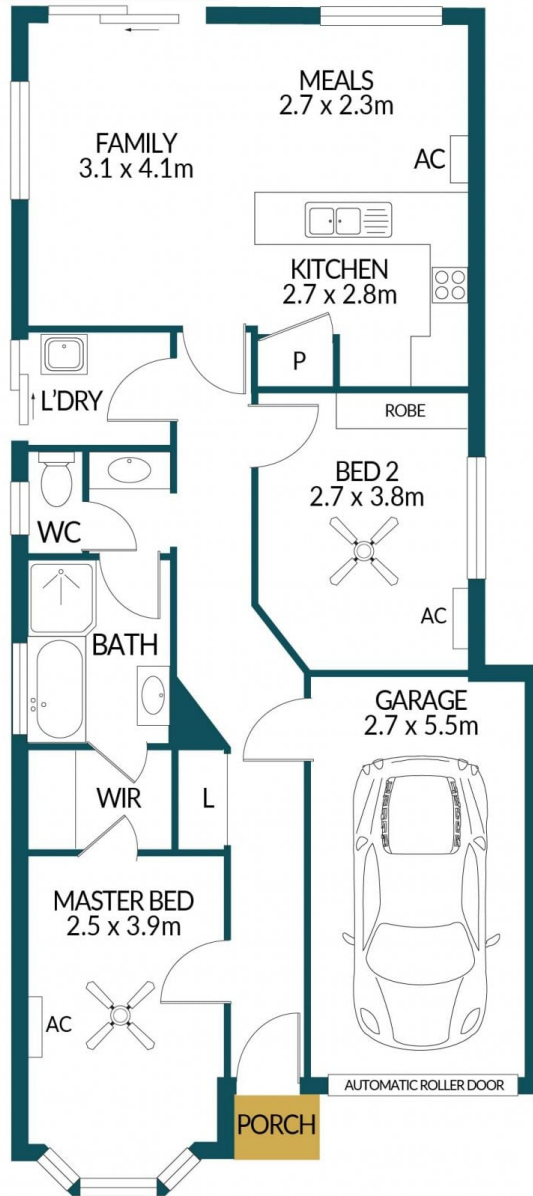
Mike Lao
0419 299 259



Brendon Ly
0417 988 111



SHADE
SAIL



34 BRISTOL CRESCENT, DAVOREN PARK



Disclaimer

Plans shown are for marketing purposes only. All dimensions and placements are approximate and not to scale. They are subject to errors and inaccuracies and Edge Realty will not accept any liability. Interested parties should make their own enquiries. Inclusions and exclusions must be confirmed in the Edge Realty Residential Contract.

APPROXIMATE DIMENSIONS

LIVING:	71.4m ²
GARAGE:	14.9m ²
PORCH:	0.8m ²
TOTAL:	87.1m ²