



27 Arcadia Drive SMITHFIELD SA

3 2 2

For an in-depth look at this home, please click on the 3D tour for a virtual walk-through or copy and paste this link into your browser

Virtual [Tour](https://my.matterport.com/show/?m=P6naj4MoKuf) Link:

To submit an offer, please copy and paste this link into your browser:
<https://www.edgerealty.com.au/buying/make-an-offer/>

Mike Lao, Tyson Bennett and Edge Realty RLA256385 are proud to present to the market a well presented and thoughtfully designed home set on a 375sqm (approx) allotment, offering ducted reverse cycle air conditioning, a seamless blend of comfort, practicality and low

[For full version visit the website](https://www.edgerealty.com.au)

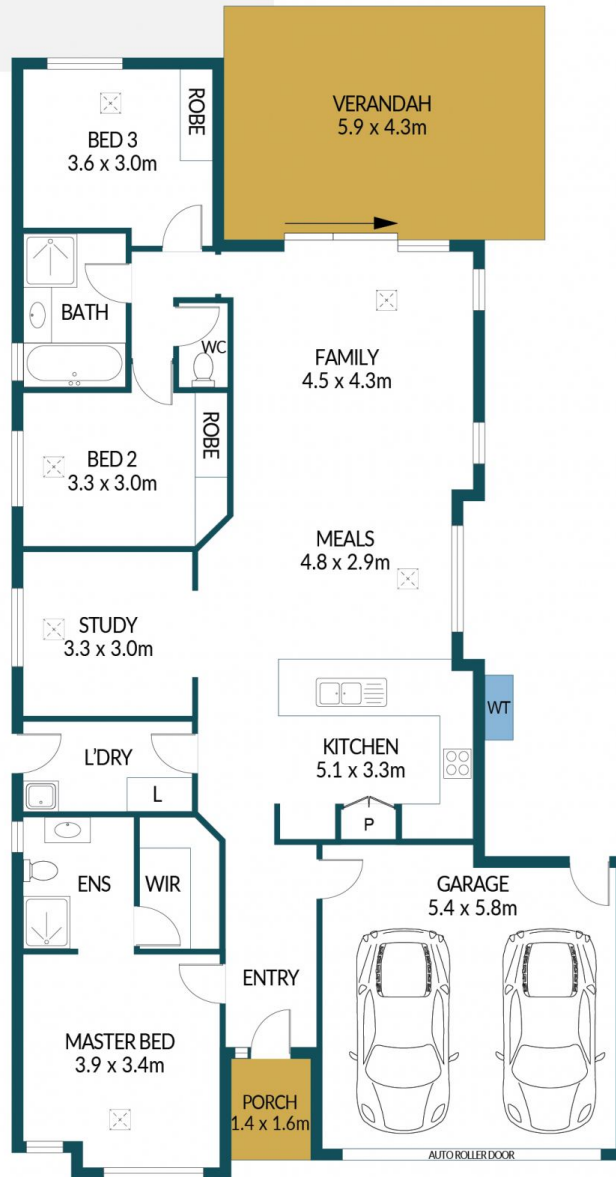
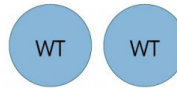
Type : House
Price : \$669,000 - \$735,000
Building Size : 188 sqm
Land Size : 375 sqm
View : <https://www.edgerealty.com.au/sale/sa/north-north-east-suburbs/smithfield/residential/house/8685336>



Mike Lao
0410 299 259



Tyson Bennett
0427 161 997



27 ARCADIA DRIVE, SMITHFIELD



Disclaimer

Plans shown are for marketing purposes only. All dimensions and placements are approximate and not to scale. They are subject to errors and inaccuracies and Edge Realty will not accept any liability. Interested parties should make their own enquiries. Inclusions and exclusions must be confirmed in the Edge Realty Residential Contract.

EDGEREALTY.COM.AU

APPROXIMATE DIMENSIONS

LIVING:	129.9m ²
GARAGE:	31.3m ²
PORCH/VERANDAH:	27.6m ²
TOTAL:	188.8m ²