



**55 Christine Avenue HILLBANK SA**

4 2 3

\*For an in-depth look at this home, please click on the 3D tour for a virtual walk-through or copy and paste this link into your browser\*

Virtual <https://my.matterport.com/show/?m=dcwWpo3ynjt> Tour Link:

Auction Saturday the 23rd of May, onsite at 2:00pm (Unless Sold Prior)

Property must be Sold, Under Vendor instructions the property is being offered with no Price Guide. A list of relevant Sales and a copy of the Certificate of Title is accessible in the following link: <https://vltre.co/RPqJGH>

To submit an offer, please copy and paste this link into your browser:

[For full version visit the website](https://www.edgerealty.com.au)

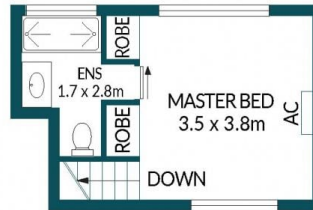
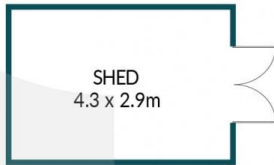
**Type** : House  
**Price** : Auction Sat 23rd May at 2:00pm onsite (USP)  
**Building Size** : 245 sqm  
**Land Size** : 760 sqm  
**View** : <https://www.edgerealty.com.au/sale/sa/north-north-east-suburbs/hillbank/residential/house/8691008>



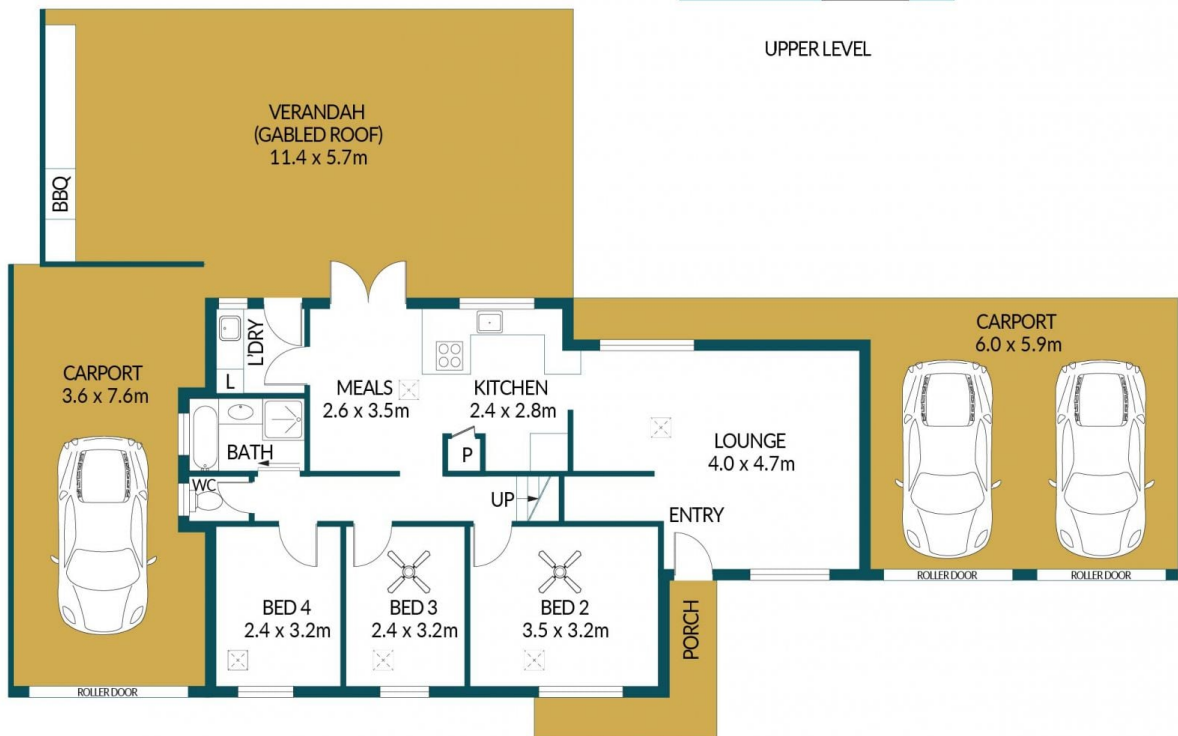
Tyson Bennett



Mike Lee



UPPER LEVEL



LOWER LEVEL

## 55 CHRISTINE AVENUE, HILLBANK



### Disclaimer

Plans shown are for marketing purposes only. All dimensions and placements are approximate and not to scale. They are subject to errors and inaccuracies and Edge Realty will not accept any liability. Interested parties should make their own enquiries. Inclusions and exclusions must be confirmed in the Edge Realty Residential Contract.

EDGEREALTY.COM.AU

### APPROXIMATE DIMENSIONS

LIVING:	108.1m <sup>2</sup>
CARPORT/SHED:	75.3m <sup>2</sup>
PORCH/VERANDAH:	74.6m <sup>2</sup>
TOTAL:	258.0m <sup>2</sup>