



5 Dianella Street RIVERLEA PARK SA

4 🚗 4 🚗 2 🚗

For an in-depth look at this home, please click on the 3D tour for a virtual walk-through or copy and paste this link into your browser

Virtual Tour Link:
<https://my.matterport.com/show/?m=Wh5ScXh8qRV>

To submit an offer, please copy and paste this link into your browser:
<https://www.edgerealty.com.au/buying/make-an-offer/>

Mike Lao, Tyson Bennett and Edge Realty RLA256385 are proud to present to the market a luxurious family residence, completed in 2024 by Kevin Homes and designed to deliver modern living on a generous 600sqm (approx) allotment. Spanning two thoughtfully planned stories with soaring 3m

[For full version visit the website](https://www.edgerealty.com.au)

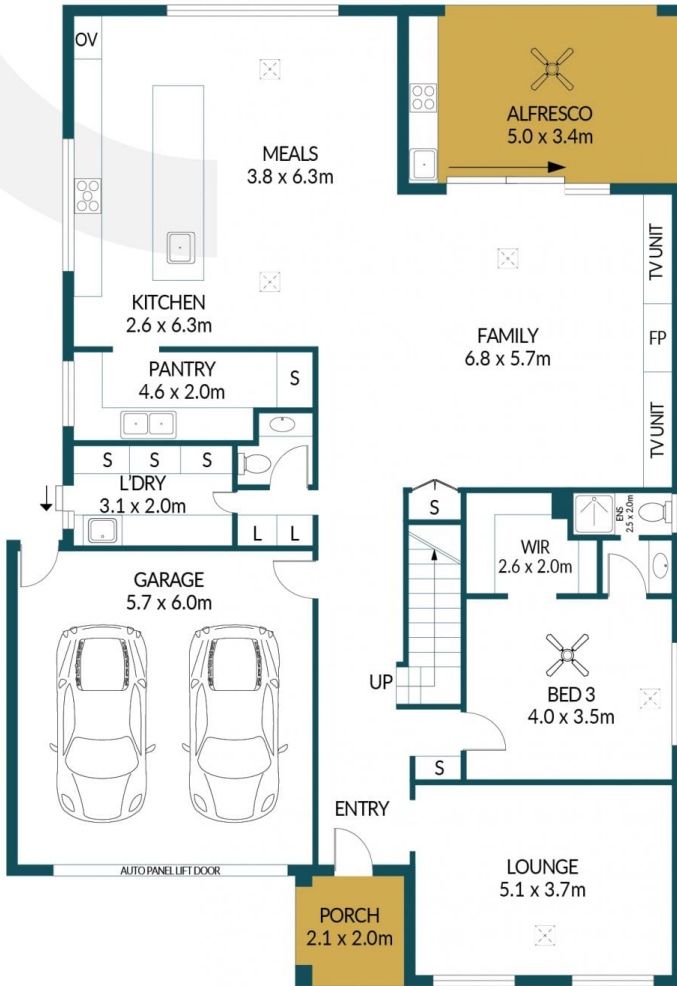
Type : House
Price : Best Offers by 9am 2/6/26 (USP)
Building Size : 366 sqm
Land Size : 600 sqm
View : <https://www.edgerealty.com.au/sale/sa-/riverlea-park/residential/house/8704721>



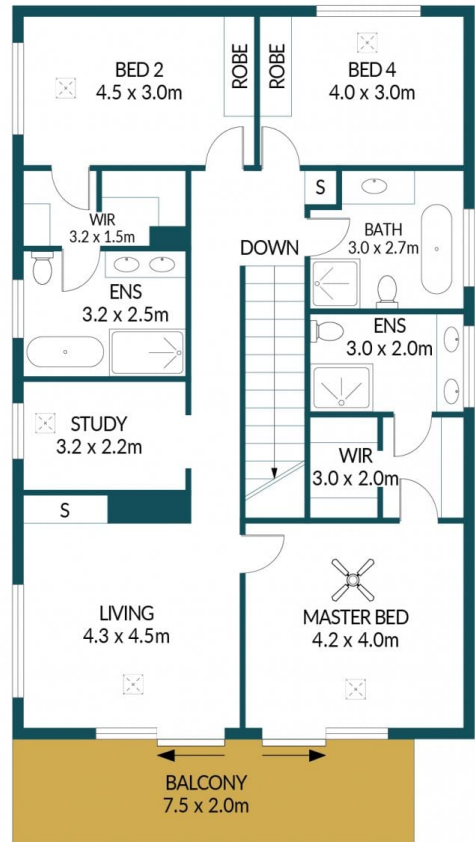
Mike Lao
0410 390 250



Tyson Bennett
0437 161 997



GROUND FLOOR



FIRST FLOOR

5 DIANELLA STREET, RIVERLEA PARK



Disclaimer

Plans shown are for marketing purposes only. All dimensions and placements are approximate and not to scale. They are subject to errors and inaccuracies and Edge Realty will not accept any liability. Interested parties should make their own enquiries. Inclusions and exclusions must be confirmed in the Edge Realty Residential Contract.

APPROXIMATE DIMENSIONS

LIVING:	295.9m ²
GARAGE:	34.2m ²
PORCH/ALFRESCO/BALCONY:	36.2m ²
TOTAL:	366.3m ²