



## 1165 Stebonheath Road MUNNO PARA WEST SA

4 2 2

\*For an in-depth look at this home, please click on the 3D tour for a virtual walk-through or copy and paste this link into your browser\*

Virtual <https://my.matterport.com/show/?m=z4DXSGrb94j> Tour Link:

To submit an offer, please copy and paste this link into your browser:  
<https://www.edgerealty.com.au/buying/make-an-offer/>

Mike Lao, Joshua Boyd and Edge Realty RLA256385 are proud to present to the market a modern and well maintained four bedroom home positioned on a 422sqm (approx) corner allotment, delivering the ideal combination of comfort, practicality and low maintenance living for first

[For full version visit the website](https://www.edgerealty.com.au)

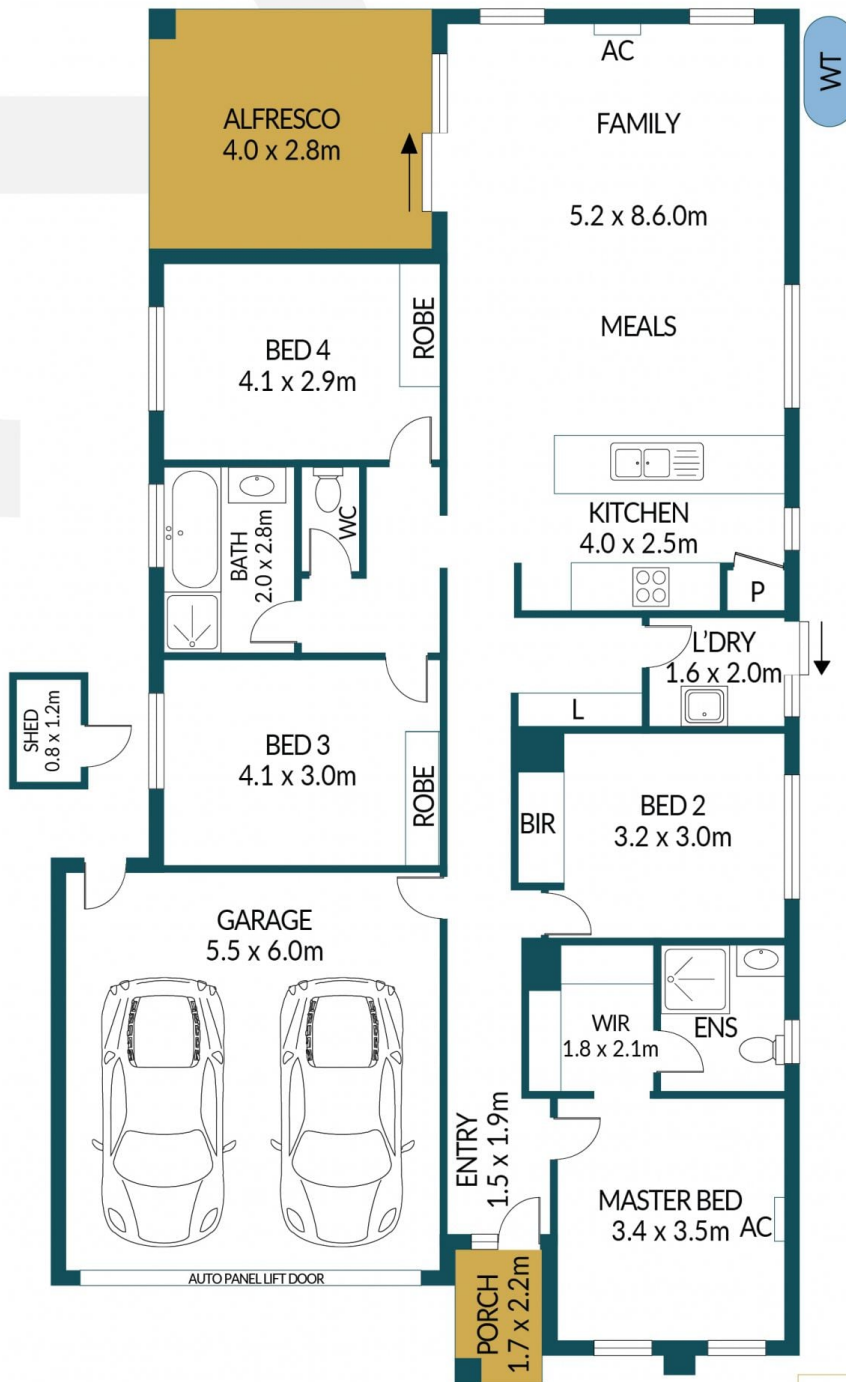
**Type** : House  
**Price** : \$699,000 - \$768,000  
**Building Size** : 164 sqm  
**Land Size** : 422 sqm  
**View** : <https://www.edgerealty.com.au/sale/sa/north-north-east-suburbs/munno-para-west/residential/house/8710566>



**Mike Lao**  
 0410 200 250



**Joshua Boyd**  
 0497889178



## 1165 STEBONHEATH ROAD, MUNNO PARA WEST



### Disclaimer

Plans shown are for marketing purposes only. All dimensions and placements are approximate and not to scale. They are subject to errors and inaccuracies and Edge Realty will not accept any liability. Interested parties should make their own enquiries. Inclusions and exclusions must be confirmed in the Edge Realty Residential Contract.

### APPROXIMATE DIMENSIONS

LIVING:	116.4m <sup>2</sup>
GARAGE/SHED:	34.0m <sup>2</sup>
PORCH/ALFRESCO:	14.9m <sup>2</sup>
TOTAL:	165.3m <sup>2</sup>